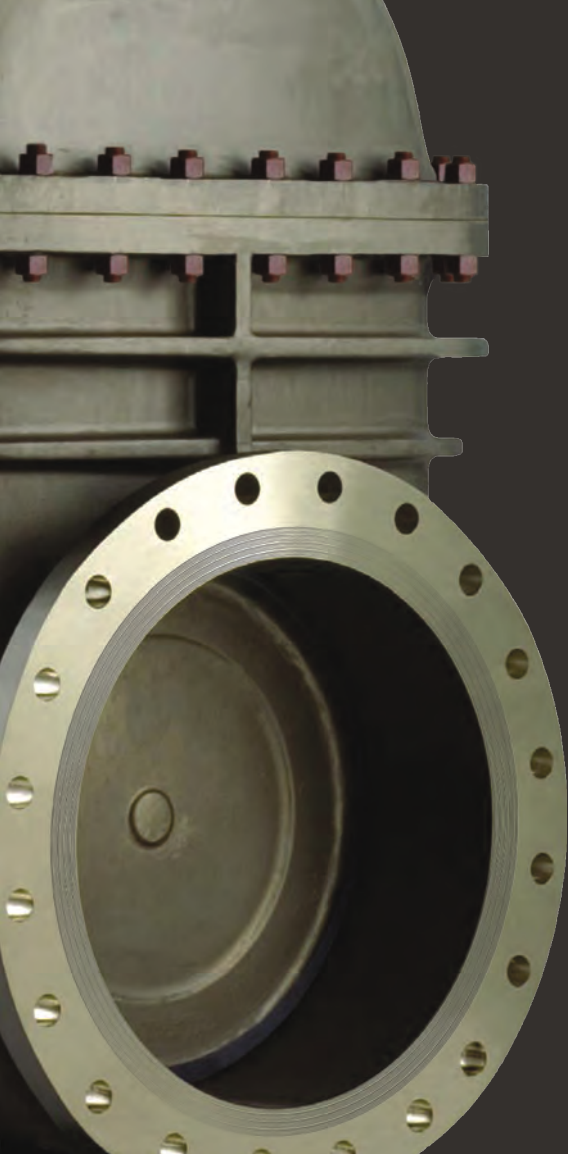




# Hawa Engineers Ltd.

## PRODUCT CATALOGUE

### THE COMPREHENSIVE VALVE RANGE



Cert. No.: 44 110 00016-E1



Cert. No.: 44 110 1220104



Cert. No.: 44 110 1220104



IS : 5312  
IS : 13095



## THE COMPANY



**HAWA ENGINEERS LTD.** being the leading industrial Valve Manufacturer in India with "**MARCK**" Brand, has fulfilled all the qualifications to manufacture a wide range of industrial valves for the most severe and demanding service of the Oil, Gas, Refinery, Chemical, Marine, Power and Pipeline Industries. Marck products include : Gate, Globe, Check, Butterfly and Ball Valves in all sizes, class rating and materials.

All Valves are manufactured to fully comply with ASTM, ANSI, API, BS & DIN Standards. Company facilities include our Valve Factory, In-house Foundry and the Technical Research Center. We have all the required manufacturing and test equipment and are capable of manufacturing valves up to size 50" and ANSI Class 2500lbs.

We are ISO 9001:2008, ISO 14000:2004 and ISO 18000:2007 Certified Company. Further, have fire test certificates as per API-6FA & API-6FD.

**Asad F. Kagdi**

Joint Managing Director

*Hawa Engineers Ltd.*

### Quality Policy

Hawa Engineers Limited is committed to provide technologically superior products & high quality services to achieve total customer satisfaction. We are committed to quality, integrity and excellence in all areas of business. We pledged to monitor our performance as an ongoing activity and strive for continual improvement.

DATE: 01.04.2012

M. N. Pathan  
DIRECTOR



Cert. No.: 44 100 960515-E3



Cert. No.: 44 104 15390584



Cert. No.: 44 116 15390584



IS : 5312  
IS : 13095



Approved



Firesafe  
Certified Valves

## OUR VALUES

Motivating Work Environment | Customer Satisfaction | Teamwork | Trust  
Commitment and Honesty | Integrity and Transparency | Quality and Excellence | Innovation

# APPLICATIONS : EVERYWHERE

## STEEL INDUSTRIES



## POWER GENERATION



## REFINERY / PETRO CHEMICALS



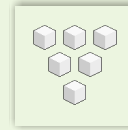
## WATER TREATMENT



## FERTILIZER PLANTS



## PULP, PAPER & SUGAR



## PHARMA & DRUGS



## CEMENT & CHEMICAL INDUSTRIES



## OEM & CONTRACTORS



# INDEX



PRODUCTS	PAGE NO.
PRESSURE REDUCING VALVES	01
STEAM TRAPS	02
STEAM TRAPS / SEPARATORS	03
FORGED STEEL GATE VALVES	04-06
GATE VALVES	07
KNIFE EDGE GATE VALVES / GATE VALVES	08
GATE VALVES	09
FORGED STEEL GLOBE VALVES	10-11
FORGED STEEL GLOBE VALVES / GLOBE VALVES	12
GLOBE VALVES	13-15
FORGED STEEL NON RETURN / CHECK VALVES	16-17
NON RETURN / CHECK VALVES	18-20
NON RETURN / WAFER CHECK VALVES	21
NON RETURN / DUAL PLATE CHECK VALVES	22
NON RETURN / DUAL PLATE CHECK VALVES / D.C.V.	23
NON RETURN / CHECK VALVES	24
ANGLE / ACCESSIBLE FEED CHECK VALVES	25
SAFETY VALVES	26
STRAINERS	27-28
BUTTERFLY VALVES	29-32
INVESTMENT CASTING BALL VALVES	33
INVESTMENT CASTING "ECO" BALL VALVES	34
INVESTMENT CASTING BALL VALVES	35
BALL VALVES	36-44
BALL VALVES / POLYPROPYLENE BALL VALVES	45
FORGED STEEL BALL VALVES	46
3 WAY / 4 WAY BALL VALVES	47-48
3 WAY / JACKETED BALL VALVES / CONTROL VALVES	49
CONTROL VALVES	50
AIR VALVES	51-52
PINCH VALVES	53
PULP VALVES / PLUG VALVES	54
PLUG VALVES / PISTON VALVES	55
SPRING LOADED RELIEF/ METALLIC FOOT VALVES	56
SLUICE VALVES / REFLUX VALVES	57
DIAPHRAGM VALVES	58
TUBE GLASS / ROTARY JOINTS	59
IBR APPROVED FLANGES & FITTINGS	60-61
FLUSH BOTTOM TANK VALVES / FLUSH BOTTOM BALL VALVES / NEEDLE VALVES	62
POLYPROPYLENE VALVES	63
G.M. VALVES / BRASS BALL VALVES	64-66
HIGH PRESSURE BALL VALVES	67-68
BLOW DOWN VALVES / I C GATE VALVES	69
FEP / PFA LINED VALVES	70-71
INVESTMENT CASTING GATE VALVES / GLOBE VALVES	72
INVESTMENT CASTING NRV / STRAINERS	73
INVESTMENT CASTING ND-40 GLOBE VALVE / DOUBLE WINDOW	74
EQUILIBRIUM BALL FLOAT VALVES / FLOAT VALVES / "KITZ" BUTTERFLY VALVES	75
"Y" TYPE GLOBE VALVES / NON RETURN VALVES	76-77
"Y" TYPE NON RETURN VALVES / "Y" TYPE STRAINERS	78-79
FABRICATED STRAINERS	80
ACCESSORIES	81



# CONSULTANT'S APPROVAL



*Hawa Engineers Ltd.*



# PRESSURE REDUCING VALVES



## CAST IRON PILOT OPERATED R - TYPE

BODY	CAST IRON (IS 210 Gr FG 200)
TRIMS	18 Cr 8 Ni / 13 Cr
MAX INLET PRESSURE	(STEAM) 13 Kg/Cm <sup>2</sup> AT 220° C
REDUCED PRESSURE	75% OF THE INLET PRESSURE TO 0.35 Kg/Cm <sup>2</sup>
MFG STD	MARCK/010
INSP & TEST STD	MARCK/010
ENDS	FLANGED TO BS 10 TABLE "F" / "H"
HYD - TEST PRESSURE	BODY : 370 Psig (26 Kg/Cm <sup>2</sup> )
<b>SIZE RANGE</b>	<b>25 MM TO 100 MM</b>

ITEM NO. 1



## CAST STEEL PILOT OPERATED R - TYPE

BODY	CAST STEEL (ASTM A 216 Gr WCB)
TRIMS	18 Cr 8 Ni / 13 Cr
MAX INLET PRESSURE	(STEAM) 17.5 Kg/Cm <sup>2</sup> AT 427°C
REDUCED PRESSURE	75% OF THE INLET PRESSURE TO 0.35 Kg/Cm <sup>2</sup>
INSP & TEST STD	MARCK/010
MFG STD	MARCK/010
ENDS	FLANGED TO BS 10 TABLE "H"
HYD - TEST PRESSURE	BODY : 500 Psig (35 Kg/Cm <sup>2</sup> )
<b>SIZE RANGE</b>	<b>25 MM TO 100 MM</b>

ITEM NO. 2



## SS INVESTMENT CASTING PRESSURE REDUCING VALVE DIRECT ACTIVATED FOR AIR/WATER/OIL/GAS & STEAM

BODY	ASTM A 351 Gr CF8 / CF8M
SEAT	BUNA-N (WATER) / VITON (STEAM)
DIAPHRAGM	BUNA-N (WATER) / VITON (STEAM)
SPRING	STAINLESS STEEL
ADJUSTING SYSTEM	STAINLESS STEEL
ENDS	SCREWED TO BSP / BSPT / NPT FLANGED END TO ASA-150#
HYD-TEST PRESSURE	40 Kg/Cm <sup>2</sup>
MAXIMUM INLET WORKING PR.	18 Kg/Cm <sup>2</sup> , 28 Kg/Cm <sup>2</sup> , 40 Kg/Cm <sup>2</sup>
PRESSURE ADJUSTING RANGE	1-6 Kg/Cm <sup>2</sup> , 4-10 Kg/Cm <sup>2</sup> , 12-25 Kg/Cm <sup>2</sup> , 20-35 Kg/Cm <sup>2</sup>
<b>SIZE RANGE</b>	<b>15 MM TO 100 MM</b>

ITEM NO. 3



## SS INVESTMENT CASTING SILENT SAFETY VALVE FOR AIR / WATER / OIL / GAS & STEAM

BODY	ASTM A 351 Gr CF8 / CF8M / CF3M
SPRING COVER	ASTM A 351 Gr CF8 / CF8M / CF3M
PLUG	CF8 / CF8M / CF3M
SEAT	BUNA-N (WATER) / VITON (STEAM)
DIAPHRAGM	BUNA-N (WATER) / VITON (STEAM)
V-SEAL	BUNA-N (WATER) / VITON (STEAM)
SPRING	STAINLESS STEEL
ADJUSTING SYSTEM	STAINLESS STEEL
ENDS	SCREWED TO BSP / BSPT / NPT FLANGED END TO ASA-150#
HYD-TEST PRESS.	40 Kg/Cm <sup>2</sup>
MAXIMUM INLET WORKING PR.	12 Kg/Cm <sup>2</sup> , 24 Kg/Cm <sup>2</sup> , 40 Kg/Cm <sup>2</sup>
PRESSURE ADJUSTING RANGE	0.5-10 Kg/Cm <sup>2</sup> , 10-20 Kg/Cm <sup>2</sup> , 20-35 Kg/Cm <sup>2</sup>
<b>SIZE RANGE</b>	<b>15 MM TO 100 MM</b>

ITEM NO. 4



**ITEM NO. 5**



**CAST IRON HORIZONTAL FLOAT TYPE STEAM TRAP**

BODY	CAST IRON (IS 210 Gr FG 200)
COVER	CAST IRON (IS 210 Gr FG 200)
TRIMS	13 Cr / 18 Cr 8 Ni
MAX INLET PRESSURE	10.54 Kg/Cm <sup>2</sup> AT 220°C
MFG STD	IS 12268
INSP & TEST STD	IS 12268
ENDS	SCREWED TO BSP
HYD-TEST PRESSURE	BODY : 300 Psig (21 Kg/Cm <sup>2</sup> )
<b>SIZE RANGE</b>	<b>15 MM TO 50 MM</b>

**ITEM NO. 5 A**



**CAST CARBON STEEL HORIZONTAL FLOAT TYPE STEAM TRAP**

BODY & COVER	ASTM A 216 Gr WCB
TRIMS	13 Cr Steel (SS 410)
MAX INLET PRESSURE	10.54 Kg/Cm <sup>2</sup> AT 220°C
MFG STD	IS 12268
INSP & TEST STD	IS 12268
ENDS	SCREWED TO BSP/BSPT/NPT (FEMALE)/ SOCKETWELD END TO ANSI B 16.11 FLANGED END TO ANSI B 16.5
HYD-TEST PRESSURE	BODY : 455 Psig (32 Kg/Cm <sup>2</sup> )
<b>SIZE RANGE</b>	<b>15 MM TO 50 MM</b>

**ITEM NO. 6**



**CAST IRON VERTICAL INVERTED BUCKET TYPE STEAM TRAP**

BODY	CAST IRON (IS 210 Gr FG 200)
COVER	CAST IRON (IS 210 Gr FG 200)
TRIMS	13 Cr / 18 Cr 8 Ni
MAX INLET PRESSURE	10.54 Kg/Cm <sup>2</sup> AT 220°C
MFG STD	IS 12268
INSP & TEST STD	IS 12268
ENDS	SCREWED TO BSP
HYD-TEST PRESSURE	BODY : 213 Psig (15 Kg/Cm <sup>2</sup> )
<b>SIZE RANGE</b>	<b>15 MM TO 50 MM</b>

**ITEM NO. 7**



**CAST IRON HORIZONTAL INVERTED BUCKET TYPE STEAM TRAP**

BODY	CAST IRON (IS 210 Gr FG 200)
COVER	CAST IRON (IS 210 Gr FG 200)
TRIMS	13 Cr / 18 Cr 8 Ni
MAX INLET PRESSURE	10.54 Kg/Cm <sup>2</sup> AT 220°C
MFG STD	IS 12268
INSP & TEST STD	IS 12268
ENDS	SCREWED TO BSP
HYD-TEST PRESSURE	BODY : 300 Psig (21 Kg/Cm <sup>2</sup> )
<b>SIZE RANGE</b>	<b>15 MM TO 50 MM</b>

# STEAM TRAPS / SEPARATORS



## THERMODYNAMIC STEAM TRAP WITH INBUILT STRAINER HD - 3

BODY	ASTM A 351 Gr CF8 / CA15
TRIMS	13 Cr / 18 Cr 8 Ni
MAX INLET PRESSURE	32 Kg/Cm <sup>2</sup> AT 425°C
MINIMUM PRESSURE	0.25 Kg/Cm <sup>2</sup>
MAX. BACK PRESSURE	SHOULD NOT EXCEED 80% OF THE INLET PRESSURE
ENDS	SCREWED TO BSP
HYD - TEST PRESSURE	911 Psig (64 Kg/Cm <sup>2</sup> )
<b>SIZE RANGE</b>	<b>15 MM TO 25 MM</b>

ITEM NO. 8



## FORGED TD-3 THERMODYNAMIC STEAM TRAP WITH BUILT IN STRAINER 1500# SCREWED END OR SOCKETWELD END

BODY	ASTM A 105 / ASTM A 182 Gr F 22
DRAIN PLUG	ASTM A 105 / ASTM A 182 Gr F 22
SCREEN	SS 304
OUTER VALVE (DISC)	ASTM A 105 / ASTM A 182 Gr F 22
	SS 410 (HARDENED)

PRESSUPRE - TEMP RATING CLASS 1500, ANSI B 16.34

ITEM NO. 9



### ASTM A 105

MIN. TEMP °C	MAX. W.P. (Kg/Cm <sup>2</sup> )
204	223
427	145

### ASTM A 182 Gr F 22

MIN. TEMP °C	MAX. W.P. (Kg/Cm <sup>2</sup> )
204	248
593	39

### SIZE RANGE

**15 MM TO 25 MM**

**CANCELLED**

ITEM NO. 10

## FABRICATED VERTICAL CYCLONIC DESIGN

BODY	FABRICATED CARBON STEEL
TRIMS	13 Cr
MAX INLET PRESSURE	17.5 Kg/Cm <sup>2</sup>
MFG STD	MARCK / 011
INSP & TEST STD	MARCK / 011
ENDS	FLANGED TO BS 10 TABLE "H" / DIN 2545
HYD-TEST PRESSURE	BODY : 500 Psig (35 Kg/Cm <sup>2</sup> )
<b>SIZE RANGE</b>	<b>25 MM TO 200 MM</b>

ITEM NO. 11



**CANCELLED**

ITEM NO. 12  
ITEM NO. 13  
ITEM NO. 14

ITEM NO. 15



## FORGED CARBON STEEL GATE VALVE ASA 800 CLASS OUTSIDE SCREW & YOKE TYPE BOLTED BONNET

BODY/BONNET	ASTM A 105
TRIMS	13 Cr
MFG STD	API 602 / BS 5352
INSP & TEST STD	API 598 / BS 6755
ENDS	SCREWED TO BSP / BSPT / NPT SOCKETWELD TO ANSI B 16.11
HYD-TEST PRESSURE	BODY : 3000 Psig (211 Kg/Cm <sup>2</sup> ) SEAT : 2000 Psig (140 Kg/Cm <sup>2</sup> )
<b>SIZE RANGE</b>	<b>15 MM TO 50 MM</b>

ITEM NO. 16



## FORGED CARBON STEEL GATE VALVE ASA 1500 / 2500 CLASS OUTSIDE SCREW & YOKE TYPE BOLTED BONNET

BODY / BONNET	ASTM A 105
TRIMS	13 Cr
MFG STD	API 602 / BS 5352
INSP & TEST STD	API 598 / BS 6755
ENDS	SCREWED TO BSPT / NPT SOCKETWELD TO ANSI B 16.11
HYD-TEST PRESSURE	BODY : 5400 Psig (379 Kg/Cm <sup>2</sup> ) FOR 1500# SEAT : 4000 Psig (281 Kg/Cm <sup>2</sup> ) FOR 1500# BODY : 9000 Psig (633 Kg/Cm <sup>2</sup> ) FOR 2500# SEAT : 6600 Psig (464 Kg/Cm <sup>2</sup> ) FOR 2500#
<b>SIZE RANGE</b>	<b>15 MM TO 40 MM</b>

ITEM NO. 17



## FORGED CARBON STEEL GATE VALVE ASA 150 / 300 CLASS OUTSIDE SCREW & YOKE TYPE BOLTED BONNET

BODY / BONNET	ASTM A 105
TRIMS	13 Cr
MFG STD	API 602 / BS 5352
INSP & TEST STD	API 598 / BS 6755
ENDS	FLANGED TO ANSI B 16.5 RF (150#/300#)
HYD-TEST PRESSURE	BODY : 425 Psig (30 Kg/Cm <sup>2</sup> ) FOR 150# SEAT : 300 Psig (21 Kg/Cm <sup>2</sup> ) FOR 150# BODY : 1100 Psig (77 Kg/Cm <sup>2</sup> ) FOR 300# SEAT : 800 Psig (56 Kg/Cm <sup>2</sup> ) FOR 300#
<b>SIZE RANGE</b>	<b>15 MM TO 50 MM</b>

# FORGED STEEL GATE VALVES



## FORGED STAINLESS STEEL GATE VALVE ASA 800 CLASS OUTSIDE SCREWED & YOKE TYPE BOLTED BONNET

BODY / BONNET	ASTM A 182 Gr F 304 / F 316
TRIMS	18 Cr 8 Ni / 18 Cr 10 Ni 2 MO
MFG STD	API 602 / BS 5352
INSP & TEST STD	API 598 / BS 6755
ENDS	SCREWED TO BSP / BSPT / NPT SOCKETWELD TO ANSI B 16.11
HYD-TEST PRESSURE	BODY : 3000 Psig (211 Kg/Cm <sup>2</sup> ) SEAT : 2000 Psig (140 Kg/Cm <sup>2</sup> )
<b>SIZE RANGE</b>	<b>15 MM TO 50 MM</b>

ITEM NO. 18



## FORGED ALLOY STEEL GATE VALVE ASA 800 CLASS OUTSIDE SCREW & YOKE TYPE BOLTED BONNET

BODY / BONNET	ASTM A 182 Gr F 11
TRIMS	13 Cr TO AISI 410
MFG STD	API 602 / BS 5352
INSP & TEST STD	API 598 / BS 6755
ENDS	SCREWED TO BSP / BSPT / NPT SOCKETWELD TO ANSI B 16.11
HYD-TEST PRESSURE	BODY : 3000 Psig (211 Kg/Cm <sup>2</sup> ) SEAT : 2000 Psig (140 Kg/Cm <sup>2</sup> )
<b>SIZE RANGE</b>	<b>15 MM TO 50 MM</b>

ITEM NO. 18 A



## FORGED ALLOY STEEL GATE VALVE ASA 800 CLASS OUTSIDE SCREW & YOKE TYPE BOLTED BONNET

BODY / BONNET	ASTM A 182 Gr F 22
TRIMS	13 Cr TO AISI 410
MFG STD	API 602 / BS 5352
INSP & TEST STD	API 598 / BS 6755
ENDS	SCREWED TO BSP / BSPT / NPT SOCKETWELD TO ANSI B 16.11
HYD-TEST PRESSURE	BODY : 3000 Psig (211 Kg/Cm <sup>2</sup> ) SEAT : 2000 Psig (140 Kg/Cm <sup>2</sup> )
<b>SIZE RANGE</b>	<b>15 MM TO 50 MM</b>

ITEM NO. 18 B



## FORGED STAINLESS STEEL GATE VALVE ASA 1500 / 2500 CLASS OUTSIDE SCREW & YOKE TYPE BOLTED BONNET

BODY / BONNET	ASTM A 182 Gr F 304 / F 316
TRIMS	18 Cr 8 Ni / 18 Cr 10 Ni - 2 MO
MFG STD	API 602 / BS 5352
INSP & TEST STD	API 598 / BS 6755
ENDS	SCREWED TO BSPT / NPT SOCKETWELD TO ANSI B 16.11
HYD-TEST PRESSURE	BODY : 5400 Psig (379 Kg/Cm <sup>2</sup> ) FOR 1500# SEAT : 4000 Psig (281 Kg/Cm <sup>2</sup> ) FOR 1500# BODY : 9000 Psig (633 Kg/Cm <sup>2</sup> ) FOR 2500# SEAT : 6600 Psig (464 Kg/Cm <sup>2</sup> ) FOR 2500#
<b>SIZE RANGE</b>	<b>15 MM TO 40 MM</b>

ITEM NO. 19



ITEM NO. 19 A



## FORGED ALLOY STEEL GATE VALVE ASA 1500 / 2500 CLASS OUTSIDE SCREW & YOKE TYPE BOLTED BONNET

BODY / BONNET	ASTM A 182 Gr F11
TRIMS	13 Cr TO AISI 410
MFG STD	API 602 / BS 5352
INSP & TEST STD	API 598 / BS 6755
ENDS	SCREWED TO BSPT / NPT SOCKETWELD TO ANSI B 16.11
HYD-TEST PRESSURE	BODY : 5400 Psig (379 Kg/Cm <sup>2</sup> ) FOR 1500# SEAT : 4000 Psig (281 Kg/Cm <sup>2</sup> ) FOR 1500# BODY : 9000 Psig (633 Kg/Cm <sup>2</sup> ) FOR 2500# SEAT : 6600 Psig (464 Kg/Cm <sup>2</sup> ) FOR 2500#
<b>SIZE RANGE</b>	<b>15 MM TO 40 MM</b>

ITEM NO. 19 B



## FORGED ALLOY STEEL GATE VALVE ASA 1500 / 2500 CLASS OUTSIDE SCREW & YOKE TYPE BOLTED BONNET

BODY / BONNET	ASTM A 182 Gr F22
TRIMS	13 Cr TO AISI 410
MFG STD	API 602 / BS 5352
INSP & TEST STD	API 598 / BS 6755
ENDS	SCREWED TO BSPT / NPT SOCKETWELD TO ANSI B 16.11
HYD-TEST PRESSURE	BODY : 5400 Psig (379 Kg/Cm <sup>2</sup> ) FOR 1500# SEAT : 4000 Psig (281 Kg/Cm <sup>2</sup> ) FOR 1500# BODY : 9000 Psig (633 Kg/Cm <sup>2</sup> ) FOR 2500# SEAT : 6600 Psig (464 Kg/Cm <sup>2</sup> ) FOR 2500#
<b>SIZE RANGE</b>	<b>15 MM TO 40 MM</b>

ITEM NO. 20



## FORGED STAINLESS STEEL GATE VALVE ASA 150 CLASS OUTSIDE SCREW & YOKE TYPE BOLTED BONNET

BODY / BONNET	ASTM A 182 Gr F 304
TRIMS	18 Cr 8 Ni / 18 Cr 10 Ni - 2 MO
MFG STD	API 602 / BS 5352
INSP & TEST STD	API 598 / BS 6755
ENDS	FLANGED TO ANSI B 16.5 RF (150#)
HYD-TEST PRESSURE	BODY : 425 Psig (30 Kg/Cm <sup>2</sup> ) SEAT : 300 Psig (21 Kg/Cm <sup>2</sup> )
<b>SIZE RANGE</b>	<b>15 MM TO 50 MM</b>

# GATE VALVES



## CAST STEEL GATE VALVE ASA 150 CLASS OUTSIDE SCREW & YOKE TYPE BOLTED BONNET

ITEM NO. 21

BODY / BONNET	ASTM A 216 Gr WCB
TRIMS	13 Cr / 18 Cr 8 Ni
MFG STD	API 600
INSP & TEST STD	API 598
ENDS	FLANGED TO ANSI B 16.5 RF (150#)
HYD-TEST PRESSURE	BODY : 425 Psig (30 Kg/Cm <sup>2</sup> ) SEAT : 300 Psig (21 Kg/Cm <sup>2</sup> )
<b>SIZE RANGE</b>	<b>25 MM TO 1200 MM</b>



## CAST STEEL GATE VALVE ASA 300 CLASS OUTSIDE SCREW & YOKE TYPE BOLTED BONNET

ITEM NO. 22

BODY / BONNET	ASTM A 216 Gr WCB
TRIMS	13 Cr / 18 Cr 8 Ni
MFG STD	API 600
INSP & TEST STD	API 598
ENDS	FLANGED TO ANSI B 16.5 RF (300#)
HYD-TEST PRESSURE	BODY : 1100 Psig (77 Kg/Cm <sup>2</sup> ) SEAT : 800 Psig (56 Kg/Cm <sup>2</sup> )
<b>SIZE RANGE</b>	<b>25 MM TO 1000 MM</b>



## CAST STEEL GATE VALVE ASA 600 CLASS OUTSIDE SCREW & YOKE TYPE BOLTED BONNET

ITEM NO. 23

BODY / BONNET	ASTM A 216 Gr WCB
TRIMS	13 Cr / 18 Cr 8 Ni
MFG STD	API 600
INSP & TEST STD	API 598
ENDS	FLANGED TO ANSI B 16.5 RF (600#)
HYD-TEST PRESSURE	BODY : 2175 Psig (153 Kg/Cm <sup>2</sup> ) SEAT : 1600 Psig (112 Kg/Cm <sup>2</sup> )
<b>SIZE RANGE</b>	<b>40 MM TO 750 MM</b>



## CAST STEEL GATE VALVE ASA 900 / 1500 CLASS OUTSIDE SCREW & YOKE TYPE BOLTED BONNET

ITEM NO. 24

BODY / BONNET	ASTM A 216 Gr WCB
TRIMS	13 Cr / 18 Cr 8 Ni
MFG STD	API 600
INSP & TEST STD	API 598
ENDS	FLANGED TO ANSI B 16.5 RF (900# / 1500#)
HYD-TEST PRESSURE	BODY : 3250 Psig (228 Kg/Cm <sup>2</sup> ) FOR 900# SEAT : 2400 Psig (168 Kg/Cm <sup>2</sup> ) FOR 900# BODY : 5575 Psig (392 Kg/Cm <sup>2</sup> ) FOR 1500# SEAT : 4080 Psig (287 Kg/Cm <sup>2</sup> ) FOR 1500#
<b>SIZE RANGE</b>	<b>50 MM TO 600 MM</b>



**ITEM NO. 25**



**CAST IRON KNIFE EDGE GATE VALVE**

BODY	CI IS 210 Gr FG 200
KNIFE PLATE	AISI 304
SEAT	NITRILE / METAL TO METAL
PACKING	PTFE
INSP. AND TEST STD	MSS SP - 81
ENDS	FLANGED / LUGGED TO ANSI B 16.5 RF
HYD-TEST PRESSURE	BODY : 71 Psig (5 Kg/Cm <sup>2</sup> ) SEAT : 40 Psig (2.8 Kg/Cm <sup>2</sup> )
<b>SIZE RANGE</b>	<b>50 MM TO 600 MM</b>

**ITEM NO. 26**



**IC SINGLE SEATED KNIFE EDGE GATE VALVE**

BODY	ASTM A 216 Gr WCB / CF8 / CF8M
KNIFE PLATE	ANSI S S 304
SEAT	NITRILE
PACKING	PTFE
INSP. AND TEST STD	MSS SP - 81
ENDS	LUGGED TO ANSI B 16.5 RF
HYD-TEST PRESSURE	BODY : 71 Psig (5 Kg/Cm <sup>2</sup> ) SEAT : 40 Psig (2.8 Kg/Cm <sup>2</sup> )
<b>SIZE RANGE</b>	<b>50 MM TO 300 MM</b>

**ITEM NO. 26 A**



**KNIFE EDGE GATE VALVE "WIKI" MODEL**

BODY	ASTM A 351 Gr CF8 / CF8M / CI / WCB
KNIFE PLATE	ASTM A 351 Gr CF8 / CF8M / CI / WCB
SEAT	NITRILE / METAL TO METAL
PACKING	PTFE
INSP. AND TEST STD	MSS SP - 81
ENDS	FLANGED / LUGGED TO ANSI B16.5 RF (150#)
HYD-TEST PRESSURE	BODY : 156 Psig (11 Kg/Cm <sup>2</sup> ) SEAT : 40 Psig (2.8 Kg/Cm <sup>2</sup> )
<b>SIZE RANGE</b>	<b>40 MM TO 750 MM</b>

**ITEM NO. 27**



**CAST STAINLESS STEEL GATE VALVE ASA 150 CLASS  
OUTSIDE SCREW & YOKE TYPE BOLTED BONNET**

BODY / BONNET	ASTM A 351 Gr CF 8 / CF 8M / CF3 / CF3M
TRIMS	18 Cr 8 Ni / 18 Cr 10 Ni - 2 MO/CF 3M OR AISI 316L
MFG STD	API 600
INSP & TEST STD	API 598
ENDS	FLANGED TO ANSI B 16.5 RF (150#)
HYD-TEST PRESSURE	BODY : 425 Psig (30 Kg/CM <sup>2</sup> ) SEAT : 300 Psig (21 Kg/CM <sup>2</sup> )
<b>SIZE RANGE</b>	<b>25 MM TO 1200 MM</b>

# GATE VALVES



## CAST STAINLESS STEEL GATE VALVE ASA 300 / 600 CLASS OUTSIDE SCREW & YOKE TYPE BOLTED BONNET

BODY / BONNET ASTM A 351 Gr CF 8 / CF 8M / CF3 / CF3M  
 TRIMS 18 Cr 8 Ni / 18 Cr 10 Ni - 2 MO / CF3M OR AISI 316L  
 MFG STD API 600  
 INSP & TEST STD API 598  
 ENDS FLANGED TO ANSI B 16.5 RF (300# / 600#)  
 HYD-TEST PRESSURE BODY : 1100 Psig (77 Kg/Cm<sup>2</sup>) / 2175 Psig (153 Kg/Cm<sup>2</sup>) - 600#  
 SEAT : 800 Psig (56 Kg/Cm<sup>2</sup>) / 1630 Psig (115 Kg/Cm<sup>2</sup>) - 600#  
**SIZE RANGE 25 MM TO 750 MM**

ITEM NO. 28



## CAST IRON GATE VALVE ASA 125 CLASS OUTSIDE SCREW & YOKE TYPE BOLTED BONNET

BODY / BONNET IS 210 Gr FG 200/220  
 TRIMS 13 Cr / 18 Cr 8 Ni  
 MFG STD GENERALLY CONFORMING TO API 600 / BS 5150  
 INSP & TEST STD GENERALLY CONFORMING TO API 598 / BS 6755  
 ENDS FLANGED TO ANSI B 16.1 FF (125#)  
 HYD-TEST PRESSURE BODY : 225 Psig (16 Kg/Cm<sup>2</sup>)  
 SEAT : 165 Psig (11.5 Kg/Cm<sup>2</sup>)  
**SIZE RANGE 25 MM TO 800 MM**

ITEM NO. 29



## STAINLESS STEEL BAR STOCK GATE VALVE 150 / 300 CLASS INSIDE SCREW TYPE, SCREWED BONNET

BODY / BONNET AISI 304  
 TRIMS AISI 304  
 MFG STD GENERALLY CONFORMING TO BS 5352  
 INSP & TEST STD BS 6755  
 ENDS SCREWED TO BSP / BSPT / NPT  
 SOCKETWELD ENDS TO ANSI B 16.11  
 FLANGED TO BS 10 TABLE "F" / "H"  
 FLANGED TO ANSI B 16.5 RF (150# / 300#)  
 HYD-TEST PRESSURE BODY : 425 Psig (30 Kg/Cm<sup>2</sup>) FOR 150#  
 SEAT : 300 Psig (21 Kg/Cm<sup>2</sup>) FOR 150#  
 BODY : 1100 Psig (77 Kg/Cm<sup>2</sup>) FOR 300#  
 SEAT : 800 Psig (56 Kg/Cm<sup>2</sup>) FOR 300#  
**SIZE RANGE 15 MM TO 100 MM**

ITEM NO. 30



## STAINLESS STEEL BAR STOCK GATE VALVE 150 CLASS INSIDE SCREW TYPE, SCREWED BONNET

BODY / BONNET AISI 316  
 TRIMS AISI 316  
 MFG STD GENERALLY CONFORMING TO BS 5352  
 INSP & TEST STD BS 6755  
 ENDS SCREWED TO BSP / BSPT / NPT  
 SOCKETWELD ENDS TO ANSI B 16.11  
 FLANGED TO ANSI B 16.5 RF (150#)  
 HYD-TEST PRESSURE BODY : 425 Psig (30 Kg/Cm<sup>2</sup>) FOR 150#  
 SEAT : 300 Psig (21 Kg/Cm<sup>2</sup>) FOR 150#  
**SIZE RANGE 15 MM TO 100 MM**

ITEM NO. 30 A



**CANCELLED**

ITEM NO. 31

**ITEM NO. 32**



**FORGED CARBON STEEL GLOBE VALVE ASA 800 CLASS  
OUTSIDE SCREW & YOKE TYPE BOLTED BONNET**

BODY / BONNET	ASTM A 105
TRIMS	13 Cr
MFG STD	BS 5352
INSP & TEST STD	BS 6755
ENDS	SCREWED TO BSP / BSPT / NPT SOCKETWELD TO ANSI B 16.11 BUTTWELD END
HYD-TEST PRESSURE	BODY : 3000 Psig (211 Kg/Cm <sup>2</sup> ) SEAT : 2000 Psig (140 Kg/Cm <sup>2</sup> )
<b>SIZE RANGE</b>	<b>15 MM TO 50 MM</b>

**ITEM NO. 33**



**FORGED CARBON STEEL GLOBE VALVE 1500 / 2500  
CLASS OUTSIDE SCREW & YOKE TYPE BOLTED BONNET**

BODY / BONNET	ASTM A 105
TRIMS	13 Cr
MFG STD	BS 5352
INSP & TEST STD	BS 6755
ENDS	SCREWED TO BSP / BSPT / NPT SOCKETWELD TO ANSI B 16.11
HYD-TEST PRESSURE	BODY : 5400 Psig (379 Kg/Cm <sup>2</sup> ) FOR 1500# SEAT : 4000 Psig (281 Kg/Cm <sup>2</sup> ) FOR 1500# BODY : 9000 Psig (633 Kg/Cm <sup>2</sup> ) FOR 2500# SEAT : 6600 Psig (464 Kg/Cm <sup>2</sup> ) FOR 2500#
<b>SIZE RANGE</b>	<b>15 MM TO 40 MM</b>

**ITEM NO. 34**



**FORGED CARBON STEEL GLOBE VALVE ASA 150 / 300  
CLASS OUTSIDE SCREW & YOKE TYPE BOLTED BONNET**

BODY / BONNET	ASTM A 105
TRIMS	18 Cr
MFG STD	BS 5352
INSP & TEST STD	BS 6755
ENDS	FLANGED TO ANSI B 16.5 RF (150#/300#)
HYD-TEST PRESSURE	BODY : 425 Psig (30 Kg/Cm <sup>2</sup> ) FOR 150# SEAT : 300 Psig (21 Kg/Cm <sup>2</sup> ) FOR 150# BODY : 1100 Psig (77KG/CM <sup>2</sup> ) FOR 300# SEAT : 800 Psig (56KG/CM <sup>2</sup> ) FOR 300#
<b>SIZE RANGE</b>	<b>15 MM TO 50 MM</b>

**ITEM NO. 35**



**FORGED S/STEEL GLOBE VALVE ASA 800 CLASS  
OUTSIDE SCREW & YOKE TYPE BOLTED BONNET**

BODY / BONNET	ASTM A 182 Gr F 304 / F 316
TRIMS	18 Cr 8 Ni / 18 Cr 10Ni - 2MO
MFG STD	BS 5352
INSP & TEST STD	BS 5146 / BS 6755
ENDS	SCREWED TO BSP / BSPT / NPT SOCKETWELD TO ANSI B 16.11
HYD-TEST PRESSURE	BODY : 3000 Psig (211 Kg/Cm <sup>2</sup> ) SEAT : 2000 Psig (140 Kg/Cm <sup>2</sup> )
<b>SIZE RANGE</b>	<b>15 MM TO 50 MM</b>

# FORGED STEEL GLOBE VALVES



## FORGED ALLOY STEEL GLOBE VALVE ASA 800 CLASS OUTSIDE SCREW & YOKE TYPE BOLTED BONNET

BODY / BONNET	ASTM A 182 Gr F 11
TRIMS	13 Cr TO AISI 410
MFG STD	API 602 / BS 5352
INSP & TEST STD	API 598 / BS 6755
ENDS	SCREWED TO BSP / BSPT / NPT SOCKETWELD TO ANSI B 16.11
HYD-TEST PRESSURE	BODY : 3000 Psig (211 Kg/Cm <sup>2</sup> ) SEAT : 2000 Psig (140 Kg/Cm <sup>2</sup> )

**SIZE RANGE 15 MM TO 50 MM**

ITEM NO. 35 A



## FORGED ALLOY STEEL GLOBE VALVE ASA 800 CLASS OUTSIDE SCREW & YOKE TYPE BOLTED BONNET

BODY / BONNET	ASTM A 182 Gr F 22
TRIMS	13 Cr TO AISI 410
MFG STD	API 602 / BS 5352
INSP & TEST STD	API 598 / BS 6755
ENDS	SCREWED TO BSP / BSPT / NPT SOCKETWELD TO ANSI B 16.11
HYD-TEST PRESSURE	BODY : 3000 Psig (211 Kg/Cm <sup>2</sup> ) SEAT : 2000 Psig (140 Kg/Cm <sup>2</sup> )

**SIZE RANGE 15 MM TO 50 MM**

ITEM NO. 35 B



## FORGED S/STEEL GLOBE VALVE ASA 1500 / 2500 CLASS OUTSIDE SCREW & YOKE TYPE BOLTED BONNET

BODY / BONNET	ASTM A 182 Gr F 304 / F 316
TRIMS	18 Cr 8 Ni / 18 Cr 10 Ni - 2MO
MFG STD	BS 5352
INSP & TEST STD	BS 5146 / BS 6755
ENDS	SCREWED TO BSPT / NPT SOCKETWELD TO ANSI B 16.11
HYD-TEST PRESSURE	BODY : 5400 Psig (379 Kg/Cm <sup>2</sup> ) FOR 1500# SEAT : 4000 Psig (281 Kg/Cm <sup>2</sup> ) FOR 1500# BODY : 9000 Psig (633 Kg/Cm <sup>2</sup> ) FOR 2500# SEAT : 6600 Psig (464 Kg/Cm <sup>2</sup> ) FOR 2500#

**SIZE RANGE 20 MM TO 40 MM**

ITEM NO. 36



## FORGED ALLOY STEEL GLOBE VALVE ASA 1500 / 2500# OUTSIDE SCREW & YOKE TYPE BOLTED BONNET

BODY / BONNET	ASTM A 182 Gr F 11
TRIMS	18 Cr TO AISI 410
MFG STD	BS 5352
INSP & TEST STD	BS 6755
ENDS	SCREWED TO BSPT / NPT SOCKETWELD TO ANSI B 16.11
HYD-TEST PRESSURE	BODY : 5400 Psig (379 Kg/Cm <sup>2</sup> ) FOR 1500# SEAT : 4000 Psig (281 Kg/Cm <sup>2</sup> ) FOR 1500# BODY : 9000 Psig (633 Kg/Cm <sup>2</sup> ) FOR 2500# SEAT : 6600 Psig (464 Kg/Cm <sup>2</sup> ) FOR 2500#

**SIZE RANGE 15 MM TO 40 MM**

ITEM NO. 36 A



ITEM NO. 36 B



## FORGED ALLOY STEEL GLOBE VALVE ASA 1500 / 2500 CALSS OUTSIDE SCREW & YOKE TYPE BOLTED BONNET

BODY / BONNET	ASTM A 182 Gr F 22
TRIMS	13 Cr TO AISI 410
MFG STD	BS 5352
INSP & TEST STD	BS 6755
ENDS	SCREWED TO BSPT / NPT SOCKETWELD TO ANSI B 16.11
HYD-TEST PRESSURE	BODY : 5400 Psig (379 Kg/Cm <sup>2</sup> ) FOR 1500# SEAT : 4000 Psig (281 Kg/Cm <sup>2</sup> ) FOR 1500# BODY : 9000 Psig (633 Kg/Cm <sup>2</sup> ) FOR 2500# SEAT : 6600 Psig (464 Kg/Cm <sup>2</sup> ) FOR 2500#
<b>SIZE RANGE</b>	<b>15 MM TO 40 MM</b>

ITEM NO. 37



## FORGED S/STEEL GLOBE VALVE ASA 150 CLASS OUTSIDE SCREW & YOKE TYPE BOLTED BONNET

BODY / BONNET	ASTM A 182 Gr F 304
TRIMS	18 Cr 8 Ni / 18 Cr 10 Ni - 2MO
MFG STD	BS 5352
INSP & TEST STD	BS 6755
ENDS	FLANGED TO ANSI B 16.5 RF (150#)
HYD-TEST PRESSURE	BODY : 425 Psig (30 Kg/Cm <sup>2</sup> ) SEAT : 300 Psig (21 Kg/Cm <sup>2</sup> )
<b>SIZE RANGE</b>	<b>15 MM TO 50 MM</b>

ITEM NO. 38



## CAST STEEL GLOBE VALVE PN 40 RATING OUTSIDE SCREW & YOKE TYPE BOLTED BONNET

BODY / BONNET	ASTM A 216 Gr WCB
TRIMS	13 Cr / 18 Cr 8 Ni
MFG STD	GENERALLY CONFORMING TO BS 1873/DIN 3356
INSP & TEST STD	BS 6755
ENDS	FLANGED TO DIN 2545
HYD-TEST PRESSURE	BODY : 854 Psig (60 Kg/Cm <sup>2</sup> ) SEAT : 569 Psig (40 Kg/Cm <sup>2</sup> )
<b>SIZE RANGE</b>	<b>15 MM TO 350 MM</b>

ITEM NO. 39

**CANCELLED**

ITEM NO. 40



## CAST STEEL GLOBE VALVE ASA 150 CLASS OUTSIDE SCREW & YOKE TYPE BOLTED BONNET

BODY / BONNET	ASTM A 216 Gr WCB
TRIMS	13 Cr / 18 Cr 8 Ni
MFG STD	BS 1873
INSP & TEST STD	BS 6755
ENDS	FLANGED TO ANSI B 16.5 RF (150#)
HYD-TEST PRESSURE	BODY : 425 Psig (30 Kg/Cm <sup>2</sup> ) SEAT : 300 Psig (21 Kg/Cm <sup>2</sup> )
<b>SIZE RANGE</b>	<b>15 MM TO 1200 MM</b>

# GLOBE VALVES



## CAST STEEL GLOBE VALVE ASA 300 CLASS OUTSIDE SCREW & YOKE TYPE BOLTED BONNET

ITEM NO. 41

BODY / BONNET	ASTM A 216 Gr WCB
TRIMS	13 Cr / 18 Cr 8 Ni
MFG STD	BS 1873
INSP & TEST STD	BS 6755
ENDS	FLANGED TO ANSI B 16.5 RF (300#)
HYD-TEST PRESSURE	BODY : 1100 Psig (77 Kg/Cm <sup>2</sup> ) SEAT : 800 Psig (56 Kg/Cm <sup>2</sup> )
<b>SIZE RANGE</b>	<b>15 MM TO 1000 MM</b>



## CAST CARBON STEEL GLOBE VALVE ASA 600 CLASS OUTSIDE SCREW & YOKE TYPE BOLTED BONNET

ITEM NO. 42

BODY / BONNET	ASTM A 216 Gr WCB
TRIMS	13 Cr / 18 Cr 8 Ni
MFG STD	BS 1873
INSP & TEST STD	BS 6755
ENDS	FLANGED TO ANSI B 16.5 RF (600#)
HYD-TEST PRESSURE	BODY : 2175 Psig (153 Kg/Cm <sup>2</sup> ) SEAT : 1600 Psig (112 Kg/Cm <sup>2</sup> )
<b>SIZE RANGE</b>	<b>25 MM TO 750 MM</b>



## CAST STEEL GLOBE VALVE ASA 900 CLASS OUTSIDE SCREW & YOKE TYPE BOLTED BONNET

ITEM NO. 43

BODY / BONNET	ASTM A 216 Gr WCB
TRIMS	13 Cr / 18 Cr 8 Ni
MFG STD	BS 1873
INSP & TEST STD	BS 6755
ENDS	FLANGED TO ANSI B 16.5 RF (900#)
HYD-TEST PRESSURE	BODY : 3250 Psig (228 Kg/Cm <sup>2</sup> ) SEAT : 2400 Psig (168 Kg/Cm <sup>2</sup> )
<b>SIZE RANGE</b>	<b>40 MM TO 600 MM</b>



## CAST STEEL GLOBE VALVE ASA 1500 CLASS OUTSIDE SCREW & YOKE TYPE BOLTED BONNET

ITEM NO. 44

BODY / BONNET	ASTM A 216 Gr WCB
TRIMS	13 Cr / 18 Cr 8 Ni
MFG STD	BS 1873
INSP & TEST STD	BS 6755
ENDS	FLANGED TO ANSI B 16.5 RF (1500#)
HYD-TEST PRESSURE	BODY : 5400 Psig (379 Kg/Cm <sup>2</sup> ) SEAT : 4000 Psig (281 Kg/Cm <sup>2</sup> )
<b>SIZE RANGE</b>	<b>50 MM TO 600 MM</b>



ITEM NO. 45



## CAST S/STEEL GLOBE VALVE ASA 150 CLASS OUTSIDE SCREW & YOKE TYPE BOLTED BONNET

BODY / BONNET  
TRIMS

ASTM A 351 Gr CF8 / CF8M / CF3M  
18 Cr 8 Ni / 18 Cr 10 Ni - 2 MO /  
CF3M OR AISI 316L

MFG STD  
INSP & TEST STD  
ENDS  
HYD-TEST PRESSURE

BS 1873  
BS 6755  
FLANGED TO ANSI B 16.5 RF (150#)  
BODY : 425 Psig (30 Kg/Cm<sup>2</sup>)  
SEAT : 300 Psig (21KG/CM<sup>2</sup>)

**SIZE RANGE**

**15 MM TO 1200 MM**

ITEM NO. 46



## CAST S/STEEL GLOBE VALVE PN 40 RATING OUTSIDE SCREW & YOKE TYPE BOLTED BONNET

BODY / BONNET  
TRIMS

ASTM A 351 Gr CF8 / CF8M  
18 Cr 8 Ni / 18 Cr 10 Ni - 2 MO /  
CF3M OR AISI 316L

MFG STD  
INSP & TEST STD  
ENDS  
HYD-TEST PRESSURE

BS 1873 / DIN 3356  
BS 6755  
FLANGED TO DIN 2545  
BODY : 854 Psig (60 Kg/Cm<sup>2</sup>)  
SEAT : 569 Psig (40 Kg/Cm<sup>2</sup>)

**SIZE RANGE**

**15 MM TO 400 MM**

ITEM NO. 47



## CAST S/STEEL GLOBE VALVE ASA 300# OUTSIDE SCREW & YOKE TYPE BOLTED BONNET

BODY / BONNET  
TRIMS

ASTM A 351 Gr CF8 / CF8M  
18 Cr 8 Ni / 18 Cr 10 Ni - 2 MO / CF3M  
BS 1873

MFG STD  
INSP & TEST STD  
ENDS  
HYD-TEST PRESSURE

BS 6755  
FLANGED TO ANSI B 16.5 RF (300#)  
BODY : 1100 Psig (77 Kg/Cm<sup>2</sup>)  
SEAT : 800 Psig (56 Kg/Cm<sup>2</sup>)

**SIZE RANGE**

**15 MM TO 1000 MM**

ITEM NO. 48



## CAST S/STEEL GLOBE VALVE ASA 600 CLASS OUTSIDE SCREW & YOKE TYPE BOLTED BONNET

BODY / BONNET  
TRIMS

ASTM A 351 Gr CF8 / CF8M  
18 Cr 8 Ni / 18 Cr 10 Ni - 2 MO / CF3M  
BS 1873

MFG STD  
INSP & TEST STD  
ENDS  
HYD-TEST PRESSURE

BS 6755  
FLANGED TO ANSI B 16.5 RF (600#)  
BODY : 2175 Psig (153 Kg/Cm<sup>2</sup>)  
SEAT : 1600 Psig (112 Kg/Cm<sup>2</sup>)

**SIZE RANGE**

**25 MM TO 750 MM**

# GLOBE VALVES



## CAST IRON GLOBE VALVE PN 10/ PN 16 RATING OUTSIDE SCREW & YOKE TYPE BOLTED BONNET

BODY / BONNET	IS 210 Gr FG 200/220
TRIMS	13 Cr / 18 Cr 8 Ni
MFG STD	GENERALLY CONFORMING TO BS 1873
INSP & TEST STD	BS 6755
ENDS	FLANGED TO DIN 2533 2532 FOR PN 10 FLANGED TO DIN 2533 FOR PN 16
HYD-TEST PRESSURE	BODY : 213 Psig (15 Kg/Cm <sup>2</sup> ) SEAT : 142 Psig (10 Kg/Cm <sup>2</sup> )
<b>SIZE RANGE</b>	<b>15 MM TO 250 MM</b>

ITEM NO. 49



## STAINLESS STEEL BAR STOCK GLOBE VALVE 150 INSIDE SCREW TYPE SCREWED BONNET

BODY / BONNET	AISI 304 / AISI 316
TRIMS	AISI 304 / AISI 316
MFG STD	GENERALLY CONFORMING TO BS 5352
INSP & TEST STD	BS 6755
ENDS	SCREWED TO BSP / BSPT / NPT SOCKETWELD ENDS TO ANSI B 16.11 FLANGED TO BS 10 TABLE "F" / "H" FLANGED TO ANSI B 16.5 (150 #)
HYD-TEST PRESSURE	BODY : 425 Psig (30 Kg/Cm <sup>2</sup> ) FOR 150# SEAT : 300 Psig (21 Kg/Cm <sup>2</sup> ) FOR 150#
<b>SIZE RANGE</b>	<b>8 MM TO 80 MM</b>

ITEM NO. 50



**ITEM NO. 51**



**FORGED CARBON STEEL CHECK VALVE ASA 800 CLASS PISTON LIFT TYPE BOLTED COVER**

BODY / COVER	ASTM A 105
TRIMS	13 Cr
MFG STD	BS 5352
INSP & TEST STD	BS 6755
ENDS	SCREWED TO BSP / BSPT / NPT SOCKETWELD TO ANSI B 16.11
HYD-TEST PRESSURE	BODY : 3000 Psig (211 Kg/Cm <sup>2</sup> ) SEAT : 2000 Psig (140 Kg/Cm <sup>2</sup> )
<b>SIZE RANGE</b>	<b>15 MM TO 50 MM</b>

**ITEM NO. 52**



**FORGED CARBON STEEL CHECK VALVE ASA 1500 / 2500 CLASS PISTON LIFT TYPE BOLTED COVER**

BODY / COVER	ASTM A 105
TRIMS	13 Cr
MFG STD	BS 5352
INSP & TEST STD	BS 6755
ENDS	SCREWED TO BSPT / NPT SOCKETWELD TO ANSI B 16.11
HYD-TEST PRESSURE	BODY : 5400 Psig (379 Kg/Cm <sup>2</sup> ) FOR 1500# SEAT : 4000 Psig (281 Kg/Cm <sup>2</sup> ) FOR 1500# BODY : 9000 Psig (633 Kg/Cm <sup>2</sup> ) FOR 2500# SEAT : 6600 Psig (464 Kg/Cm <sup>2</sup> ) FOR 2500#
<b>SIZE RANGE</b>	<b>15 MM TO 40 MM</b>

**ITEM NO. 53**



**FORGED CARBON STEEL CHECK VALVE ASA 150 / 300 CLASS PISTON LIFT TYPE BOLTED COVER**

BODY / COVER	ASTM A 105
TRIMS	13 Cr
MFG STD	BS 5352
INSP & TEST STD	BS 6755
ENDS	FLANGED TO ANSI B 16.5 RF (150#/300#)
HYD-TEST PRESSURE	BODY : 425 Psig (30 Kg/Cm <sup>2</sup> ) FOR 150# SEAT : 300 Psig (30 Kg/Cm <sup>2</sup> ) FOR 150# BODY : 1100 Psig (77 Kg/Cm <sup>2</sup> ) FOR 300# SEAT : 800 Psig (56 Kg/Cm <sup>2</sup> ) FOR 300#
<b>SIZE RANGE</b>	<b>15 MM TO 50 MM</b>

**ITEM NO. 54**



**FORGED S/STEEL CHECK VALVE ASA 800 CLASS PISTON LIFT TYPE BOLTED COVER**

BODY / COVER	ASTM A 182 Gr F 304 / F 316
TRIMS	18 Cr 8 Ni / 18 Cr 10 Ni - 2MO
MFG STD	BS 5352
INSP & TEST STD	BS 6755
ENDS	SCREWED TO BSP/BSPT/NPT SOCKETWELD TO ANSI B 16.11
HYD-TEST PRESSURE	BODY : 3000 Psig (211 Kg/Cm <sup>2</sup> ) SEAT : 2000 Psig (140 Kg/Cm <sup>2</sup> )
<b>SIZE RANGE</b>	<b>15 MM TO 50 MM</b>

# FORGED STEEL NON RETURN / CHECK VALVES



## FORGED ALLOY STEEL CHECK VALVE ASA 800 CLASS OUTSIDE SCREW & YOKE TYPE BOLTED COVER

ITEM NO. 54 A

BODY / COVER	ASTM A 182 Gr F 11
TRIMS	13 Cr TO AISI 410
MFG STD	BS 5352
INSP & TEST STD	BS 6755
ENDS	SCREWED TO BSP / BSPT / NPT SOCKETWELD TO ANSI B 16.11
HYD-TEST PRESSURE	BODY : 3000 Psig (211 Kg/Cm <sup>2</sup> ) SEAT : 2000 Psig (140 Kg/Cm <sup>2</sup> )
<b>SIZE RANGE</b>	<b>15 MM TO 50 MM</b>



## FORGED ALLOY STEEL CHECK VALVE ASA 800 CLASS OUTSIDE SCREW & YOKE TYPE BOLTED COVER

ITEM NO. 54 B

BODY / COVER	ASTM A 182 Gr F 22
TRIMS	13 Cr TO AISI 410
MFG STD	BS 5352
INSP & TEST STD	BS 6755
ENDS	SCREWED TO BSP / BSPT / NPT SOCKETWELD TO ANSI B 16.11
HYD-TEST PRESSURE	BODY : 3000 Psig (211 Kg/Cm <sup>2</sup> ) SEAT : 2000 Psig (140 Kg/Cm <sup>2</sup> )
<b>SIZE RANGE</b>	<b>15 MM TO 50 MM</b>



## FORGED S/STEEL CHECK VALVE ASA 1500 / 2500 CLASS PISTON LIFT TYPE BOLTED COVER

ITEM NO. 55

BODY / COVER	ASTM A 182 Gr F 304 / F 316
TRIMS	18 Cr 8 Ni / 18 Cr 10 Ni - 2MO
MFG STD	BS 5352
INSP & TEST STD	BS 6755
ENDS	SCREWED TO BSPT / NPT SOCKETWELD TO ANSI B 16.11
HYD-TEST PRESSURE	BODY : 5400 Psig (379 Kg/Cm <sup>2</sup> ) FOR 1500# SEAT : 4000 Psig (281 Kg/Cm <sup>2</sup> ) FOR 1500# BODY : 9000 Psig (633 Kg/Cm <sup>2</sup> ) FOR 2500# SEAT : 6600 Psig (464 Kg/Cm <sup>2</sup> ) FOR 2500#
<b>SIZE RANGE</b>	<b>15 MM TO 40 MM</b>



## FORGED ALLOY STEEL CHECK VALVE ASA 1500 / 2500 CLASS PISTON LIFT TYPE BOLTED COVER

ITEM NO. 55 A

BODY / COVER	ASTM A 182 Gr F 11
TRIMS	13 Cr TO AISI 410
MFG STD	BS 5352
INSP & TEST STD	BS 6755
ENDS	SCREWED TO BSPT / NPT SOCKETWELD TO ANSI B 16.11
HYD-TEST PRESSURE	BODY : 5400 Psig (379 Kg/Cm <sup>2</sup> ) SEAT : 4000 Psig (281 Kg/Cm <sup>2</sup> )
<b>SIZE RANGE</b>	<b>15 MM TO 50 MM</b>



ITEM NO. 55 B



## FORGED ALLOY STEEL CHECK VALVE ASA 1500 / 2500 CLASS OUTSIDE SCREW & YOKE TYPE BOLTED COVER

BODY / COVER	ASTM A 182 Gr F 22
TRIMS	13 Cr TO AISI 410
MFG STD	BS 5352
INSP & TEST STD	BS 6755
ENDS	SCREWED TO BSPT / NPT SOCKETWELD TO ANSI B 16.11
HYD-TEST PRESSURE	BODY : 5400 Psig (379 Kg/Cm <sup>2</sup> ) SEAT : 4000 Psig (281 Kg/Cm <sup>2</sup> )
<b>SIZE RANGE</b>	<b>15 MM TO 50 MM</b>

ITEM NO. 56



## FORGED S/STEEL CHECK VALVE ASA 150 CLASS PISTON LIFT TYPE BOLTED COVER

BODY / COVER	ASTM A 182 Gr F 304 / F 316
TRIMS	18 Cr 8 Ni / 18 Cr 10 Ni - 2MO
MFG STD	BS 5352
INSP & TEST STD	BS 6755
ENDS	FLANGED TO ANSI B 16.5 RF (150#)
HYD-TEST PRESSURE	BODY : 425 Psig (30 Kg/Cm <sup>2</sup> ) SEAT : 300 Psig (21 Kg/Cm <sup>2</sup> )
<b>SIZE RANGE</b>	<b>15 MM TO 50 MM</b>

ITEM NO. 57



## CAST STEEL CHECK VALVE PN 40 RATING PISTON LIFT TYPE BOLTED COVER

BODY / COVER	ASTM A 216 Gr WCB
TRIMS	13 Cr / 18 Cr 8 Ni
MFG STD	BS 1868/ DIN 3356
INSP & TEST STD	BS 6755
ENDS	FLANGED TO DIN 2545
HYD-TEST PRESSURE	BODY : 854 Psig (60 Kg/Cm <sup>2</sup> ) SEAT : 569 Psig (40 Kg/Cm <sup>2</sup> )
<b>SIZE RANGE</b>	<b>15 MM TO 300 MM</b>

ITEM NO. 58



## CAST CARBON STEEL NON RETURN VALVE ASA 150 CLASS SWING TYPE BOLTED COVER

BODY / COVER	ASTM A 216 Gr WCB
TRIMS	13 Cr / 18 Cr 8 Ni
MFG STD	BS 1868
INSP & TEST STD	BS 6755
ENDS	FLANGED TO ANSI B 16.5 RF (150#)
HYD-TEST PRESSURE	BODY : 425 Psig (30 Kg/Cm <sup>2</sup> ) SEAT : 300 Psig (21 Kg/Cm <sup>2</sup> )
<b>SIZE RANGE</b>	<b>25 MM TO 1200 MM</b>

# NON RETURN / CHECK VALVES



## CAST STEEL NON RETURN VALVE ASA 300 CLASS SWING TYPE BOLTED COVER

ITEM NO. 59

BODY / COVER	ASTM A 216 Gr WCB
TRIMS	13 Cr / 18 Cr 8 Ni
MFG STD	BS 1868
INSP & TEST STD	BS 6755
ENDS	FLANGED TO ANSI B 16.5 RF (300#)
HYD-TEST PRESSURE	BODY : 1100 Psig (77 Kg/Cm <sup>2</sup> ) SEAT : 800 Psig (56 Kg/Cm <sup>2</sup> )
<b>SIZE RANGE</b>	<b>25 MM TO 1000 MM</b>



## CAST STEEL NON RETURN VALVE ASA 600 CLASS SWING TYPE BOLTED COVER

ITEM NO. 60

BODY / COVER	ASTM A 216 Gr WCB
TRIMS	13 Cr / 18 Cr 8 Ni
MFG STD	BS 1868
INSP & TEST STD	BS 6755
ENDS	FLANGED TO ANSI B 16.5 RF (600#)
HYD-TEST PRESSURE	BODY : 2175 Psig (153 Kg/Cm <sup>2</sup> ) SEAT : 1600 Psig (112 Kg/Cm <sup>2</sup> )
<b>SIZE RANGE</b>	<b>25 MM TO 750 MM</b>



## CAST S/STEEL NON RETURN VALVE ASA 150 CLASS SWING TYPE BOLTED COVER

ITEM NO. 61

BODY / COVER	ASTM A 351 Gr CF8 / CF8M / CF3M
TRIMS	18 Cr 8 Ni / 18 Cr 10 Ni - 2 MO / CF8M / CF3M OR AISI 316L
MFG STD	BS 1868
INSP & TEST STD	BS 6755
ENDS	FLANGED TO ANSI B 16.5 RF (150#)
HYD-TEST PRESSURE	BODY : 425 Psig (30 Kg/Cm <sup>2</sup> ) SEAT : 300 Psig (21 Kg/Cm <sup>2</sup> )
<b>SIZE RANGE</b>	<b>25 MM TO 1200 MM</b>



## CAST S/STEEL NON RETURN VALVE ASA 300 CLASS SWING TYPE BOLTED COVER

ITEM NO. 61 A

BODY / COVER	ASTM A 351 Gr CF8/ CF8M / CF3M
TRIMS	18 Cr 8 Ni / 18 Cr 10 Ni - 2 MO / CF8M / CF3M OR AISI 316L
MFG STD	BS 1868
INSP & TEST STD	BS 6755
ENDS	FLANGED TO ANSI B 16.5 RF (150#)
HYD-TEST PRESSURE	BODY : 425 Psig (30 Kg/Cm <sup>2</sup> ) SEAT : 300 Psig (21 Kg/Cm <sup>2</sup> )
<b>SIZE RANGE</b>	<b>25 MM TO 1000 MM</b>



ITEM NO. 62



## CAST S/STEEL NON RETURN VALVE PN 40 RATING PISTON LIFT-UP TYPE BOLTED COVER

BODY / COVER	ASTM A 351 Gr CF8 / CF8M / CF3M
TRIMS	18 Cr 8 Ni / 18 Cr 10 Ni - 2 MO / CF3M / OR AISI 316L
MFG STD	BS 1868
INSP & TEST STD	BS 6755
ENDS	FLANGED TO DIN 2545
HYD-TEST PRESSURE	BODY : 854 Psig (60 Kg/Cm <sup>2</sup> ) SEAT : 569 Psig (40 Kg/Cm <sup>2</sup> )
<b>SIZE RANGE</b>	<b>25 MM TO 400 MM</b>

ITEM NO. 63



## CAST IRON NON RETURN VALVE PN 10 / PN 16 RATING PISTON LIFT TYPE BOLTED COVER

BODY / COVER	IS 210 Gr FG 200/220
TRIMS	13 Cr / 18 Cr 8 Ni
MFG STD	GENERALLY CONFORMING TO BS 1868
INSP & TEST STD	GENERALLY CONFORMING TO BS 6755
ENDS	FLANGED TO DIN 2532 FOR PN 10 FLANGED TO DIN 2533 FOR PN 16
HYD-TEST PRESSURE	BODY : 213 Psig (15 Kg/Cm <sup>2</sup> ) SEAT : 142 Psig (10 Kg/Cm <sup>2</sup> )
<b>SIZE RANGE</b>	<b>15 MM TO 250 MM</b>

ITEM NO. 64



## CAST IRON NON RETURN VALVE ASA 125 CLASS SWING TYPE BOLTED COVER

BODY / COVER	IS 210 Gr FG 200/220
TRIMS	13 Cr / 18 Cr 8 Ni
MFG STD	GENERALLY CONFORMING TO BS 1868
INSP & TEST STD	GENERALLY CONFORMING TO BS 6755
ENDS	FLANGED TO ANSI B 16.1 FF (125#)
HYD-TEST PRESSURE	BODY : 225 Psig (16 Kg/Cm <sup>2</sup> ) SEAT : 165 Psig (11.5 Kg/Cm <sup>2</sup> )
<b>SIZE RANGE</b>	<b>25 MM TO 700 MM</b>

# NON RETURN / WAFER CHECK VALVES



## CARBON STEEL WAFER CHECK VALVES

ITEM NO. 65

BODY	EN 8
PIN	13 Cr TO AISI 410 / 18 Cr 8 Ni TO AISI 304 / 316
RINGS	MOULDED NEOPRENE / NITRILE / PTFE
MFG STD	GENERALLY CONFORMING TO API 6D
TEST STD	GENERALLY CONFORMING TO API 6D
ENDS	WAFER TYPE
HYD-TEST PRESSURE	BODY : 225 Psig (16 Kg/Cm <sup>2</sup> ) SEAT : 165 Psig (11.5 Kg/Cm <sup>2</sup> )
<b>SIZE RANGE</b>	<b>25 MM TO 600 MM</b>



## STAINLESS STEEL 304 WAFER CHECK VALVES

ITEM NO. 66

BODY	ASTM A 351 Gr CF8
PIN	18 Cr 8 Ni TO AISI 304
RINGS	MOULDED NEOPRENE / NITRILE / PTFE
MFG STD	GENERALLY CONFORMING TO API 6D
TEST STD	GENERALLY CONFORMING TO API 6D
ENDS	WAFER TYPE
HYD-TEST PRESSURE	BODY : 225 Psig (16 Kg/Cm <sup>2</sup> ) SEAT : 165 Psig (11.5 Kg/Cm <sup>2</sup> )
<b>SIZE RANGE</b>	<b>25 MM TO 600 MM</b>



## STAINLESS STEEL 316 WAFER CHECK VALVES

ITEM NO. 67

BODY	ASTM A 351 Gr CF8M
PIN	18 Cr 10 Ni 2 MO TO AISI 316
RINGS	MOULDED NEOPRENE / NITRILE / PTFE
MFG STD	GENERALLY CONFORMING TO API 6D
TEST STD	GENERALLY CONFORMING TO API 6D
ENDS	WAFER TYPE
HYD-TEST PRESSURE	BODY : 225 Psig (16 Kg/Cm <sup>2</sup> ) SEAT : 165 Psig (11.5 Kg/Cm <sup>2</sup> )
<b>SIZE RANGE</b>	<b>25 MM TO 600 MM</b>



## STAINLESS STEEL 316L WAFER CHECK VALVES

ITEM NO. 68

BODY	ASTM A 351 Gr CF3M
PIN	AISI 316
RINGS	MOULDED NEOPRENE / NITRILE
MFG STD	GENERALLY CONFORMING TO API 6D
TEST STD	GENERALLY CONFORMING TO API 6D
ENDS	WAFER TYPE
HYD-TEST PRESSURE	BODY : 225 Psig (16 Kg/Cm <sup>2</sup> ) SEAT : 165 Psig (11.5 Kg/Cm <sup>2</sup> )
<b>SIZE RANGE</b>	<b>25 MM TO 600 MM</b>



**ITEM NO. 69**



**CAST IRON WAFER CHECK VALVES**

BODY	IS 210 Gr FG 200/220
PIN	13 Cr TO AISI 410 / 18 Cr 8 Ni TO AISI 304
RINGS	MOULDED NEOPRENE / NITRILE
MFG STD	GENERALLY CONFORMING TO API 6D
TEST STD	GENERALLY CONFORMING TO API 6D
ENDS	WAFER TYPE
HYD-TEST PRESSURE	BODY : 225 Psig (16 Kg/Cm <sup>2</sup> ) SEAT : 165 Psig (11.5 Kg/Cm <sup>2</sup> )
<b>SIZE RANGE</b>	<b>25 MM TO 600 MM</b>

**ITEM NO. 70**



**CAST IRON DUAL PLATE DOUBLE FLANGED CHECK VALVE**

BODY	IS 210 Gr FG 200/220
CLOSURE PLATE (DISC)	S.G. IRON / SS 304
HING PIN	AISI 304 / AISI 316
STOP PIN	AISI 304 / AISI 316
SPRING	STAINLESS STEEL
SEAT	EPDM
MFG STD	GENERALLY CONFORMING TO API 6D / API 594
INSP / TEST STD	GENERALLY CONFORMING TO API 6D / API 598
ENDS	FLANGE END TO ANSI B16.5 FF (125#)
HYD-TEST PRESSURE	BODY : 225 Psig (16 Kg/Cm <sup>2</sup> ) SEAT : 165 Psig (11.5 Kg/Cm <sup>2</sup> )
<b>SIZE RANGE</b>	<b>50 MM TO 1000 MM</b>

**ITEM NO. 70 A**



**CAST STEEL DUAL PLATE DOUBLE FLANGED CHECK VALVE**

BODY	ASTM A 216 Gr WCB
CLOSURE PLATE (DISC)	SS 304 / SS 316
HING PIN	AISI 304 / AISI 316
STOP PIN	AISI 304 / AISI 316
SPRING	STAINLESS STEEL
SEAT	EPDM
MFG STD	GENERALLY CONFORMING TO API 6D / API 594
INSP / TEST STD	GENERALLY CONFORMING TO API 6D / API 598
ENDS	FLANGE END TO ANSI B16.5 RF (150#)
HYD-TEST PRESSURE	BODY : 425 Psig (30 Kg/Cm <sup>2</sup> ) SEAT : 300 Psig (21 Kg/Cm <sup>2</sup> )
<b>SIZE RANGE</b>	<b>50 MM TO 1000 MM</b>

# NON RETURN / DUAL PLATE CHECK VALVES / D.C.V.



## CAST IRON DUAL PLATE WAFER CHECK VALVES

ITEM NO. 71

BODY	IS 210 Gr FG 200/220
CLOSURE PLATE (DISC)	SG IRON / SS 304
HINGE PIN	AISI 304 / AISI 316
STOP PIN	AISI 304 / AISI 316
SPRING	STAINLESS STEEL
SEAT	EPDM
MFG STD	GENERALLY CONFORMING TO API 6D / API 594
INSP & TEST STD	GENERALLY CONFORMING TO API 6D / API 598
ENDS	WAFER TYPE TO SUIT ANSI B 16.1 (125#) WAFER TYPE TO SUIT DIN 2532 (PN 10) / DIN 2533 (PN16)
HYD-TEST PRESSURE	BODY : 225 Psig (16 Kg/Cm <sup>2</sup> ) FOR 125# SEAT : 165 Psig (11.5 Kg/Cm <sup>2</sup> ) FOR 125# BODY : 213 Psig (15 Kg/Cm <sup>2</sup> ) FOR PN 10 SEAT : 142 Psig (10 Kg/Cm <sup>2</sup> ) FOR PN 10
<b>SIZE RANGE</b>	<b>50 MM TO 600 MM</b>



## CAST STEEL DUAL PLATE WAFER CHECK VALVES

ITEM NO. 72

BODY	ASTM A 216 Gr WCB
CLOSURE PLATE (DISC)	SS 304 / SS 316
HINGE PIN	AISI 304 / AISI 316
STOP PIN	AISI 304 / AISI 316
SPRING	STAINLESS STEEL
SEAT	EPDM
MFG STD	GENERALLY CONFORMING TO API 6D / API 594
INSP & TEST STD	GENERALLY CONFORMING TO API 6D / API 598
ENDS	WAFER TYPE TO SUIT ANSIB 16.5 (150#)
HYD-TEST PRESSURE	BODY : 425 Psig (30 Kg/Cm <sup>2</sup> ) SEAT : 300 Psig (21 Kg/Cm <sup>2</sup> )
<b>SIZE RANGE</b>	<b>50 MM TO 600 MM</b>



## STAINLESS STEEL NON SLAM DISC CHECK VALVES

ITEM NO. 72 A

BODY	ASTM A 361 Gr CF8 / CF8M
DISC	SS 304 / SS 316
SPRING	STAINLESS STEEL
SPRING RETAINER	AISI 304 / AISI 316
SEAT	METAL TO METAL / EPDM / NITRILE / PTFE
INSP & TEST STD	API 598
ENDS	WAFER TYPE FOR 15 MM TO 200 MM SCREWED END FOR 15 MM TO 100 MM
HYD-TEST PRESSURE	BODY : 854 Psig (60 Kg/Cm <sup>2</sup> ) SEAT : 569 Psig (40 Kg/Cm <sup>2</sup> )
<b>SIZE RANGE</b>	<b>15 MM TO 200 MM</b>



ITEM NO. 73



## STAINLESS STEEL BAR STOCK CHECK VALVE ASA 150 / 300 CLASS LIFT-UP TYPE HORIZONTAL SCREWED COVER

BODY / COVER	AISI 304
TRIMS	18 Cr 8 Ni TO AISI 304
MFG STD	GENERALLY CONFORMING TO BS 5352
INSP & TEST STD	BS 6755
ENDS	SCREWED TO BSP / BSPT / NPT SOCKETWELD ENDS TO ANSI B 16.11 FLANGED TO BS 10 TABLE "F" / "H" FLANGED TO ANSI B 16.5 RF (150#/300#)
HYD-TEST PRESSURE	BODY : 425 Psig (30 Kg/Cm <sup>2</sup> ) FOR 150# SEAT : 300 Psig (21 Kg/Cm <sup>2</sup> ) FOR 150# BODY : 1100 Psig (77 Kg/Cm <sup>2</sup> ) FOR 300# SEAT : 800 Psig (56 Kg/Cm <sup>2</sup> ) FOR 300#
<b>SIZE RANGE</b>	<b>15 MM TO 100 MM</b>

ITEM NO. 74



## STAINLESS STEEL BAR STOCK CHECK VALVE ASA 150 / 300 CLASS LIFT-UP TYPE VERTICAL SCREWED COVER

BODY / COVER	AISI 304
TRIMS	18 Cr 8 Ni TO AISI 304
MFG STD	GENERALLY CONFORMING TO BS 5352
INSP & TEST STD	BS 6755
ENDS	SCREWED TO BSP / BSPT / NPT SOCKETWELD TO ANSI B 16.11 FLANGED TO BS 10 TABLE "F" / "H" FLANGED TO ANSI B 16.5 RF (150#/300#)
HYD-TEST PRESSURE	BODY : 425 Psig (30 Kg/Cm <sup>2</sup> ) FOR 150# SEAT : 300 Psig (21 Kg/Cm <sup>2</sup> ) FOR 150# BODY : 1100 Psig (77 Kg/Cm <sup>2</sup> ) FOR 300# SEAT : 800 Psig (56 Kg/Cm <sup>2</sup> ) FOR 300#
<b>SIZE RANGE</b>	<b>15 MM TO 100 MM</b>

ITEM NO. 75



## STAINLESS STEEL BAR STOCK CHECK VALVE ASA 150 / 300 CLASS LIFT-UP TYPE VERTICAL SCREWED COVER

BODY / COVER	AISI 316
TRIMS	18 Cr 8 Ni 2 MO TO AISI 316
MFG STD	GENERALLY CONFORMING TO BS 5352
INSP & TEST STD	BS 6755
ENDS	SCREWED TO BSP / BSPT / NPT SOCKETWELD ENDS TO ANSI B 16.11 FLANGED TO BS 10 TABLE "F" / "H" FLANGED TO ANSI B 16.5 RF (150#/300#)
HYD-TEST PRESSURE	BODY : 425 Psig (30 Kg/Cm <sup>2</sup> ) FOR 150# SEAT : 300 Psig (21 Kg/Cm <sup>2</sup> ) FOR 150# BODY : 1100 Psig (77 Kg/Cm <sup>2</sup> ) FOR 300# SEAT : 800 Psig (56 Kg/Cm <sup>2</sup> ) FOR 300#
<b>SIZE RANGE</b>	<b>15 MM TO 100 MM</b>

# ANGLE/ACCESSIBLE FEED CHECK VALVES



## CAST STEEL ANGLE GLOBE VALVE PN 40 RATING OUT SIDE SCREW & YOKE TYPE BOLTED BONNET

ITEM NO. 76

BODY / COVER	ASTM A 216 Gr WCB
TRIMS	13 Cr
MFG STD	GENERALLY CONFORMING TO BS 1873
INSP & TEST STD	GENERALLY CONFORMING TO BS 6755
ENDS	FLANGED TO DIN 2545
HYD-TEST PRESSURE	BODY : 854 Psig (60 Kg/Cm <sup>2</sup> ) SEAT : 569 Psig (40 Kg/Cm <sup>2</sup> )
<b>SIZE RANGE</b>	<b>15 MM to 250 MM</b>



## CAST IRON ANGLE GLOBE VALVE PN 10 RATING OUT SIDE SCREW & YOKE TYPE BOLTED BONNET

ITEM NO. 77

BODY / COVER	IS 210 Gr FG 200/220
TRIMS	13 Cr
MFG STD	GENERALLY CONFORMING TO BS 1873
INSP & TEST STD	GENERALLY CONFORMING TO BS 6755
ENDS	FLANGED TO DIN 2532
HYD-TEST PRESSURE	BODY : 213 Psig (15 Kg/Cm <sup>2</sup> ) SEAT : 142 Psig (10 Kg/Cm <sup>2</sup> )
<b>SIZE RANGE</b>	<b>15 MM to 200 MM</b>



## CAST STEEL ACCESSIBLE FEED CHECK VALVE PN 40 RATING OUT SIDE SCREW & YOKE TYPE BOLTED BONNET

ITEM NO. 78

BODY / COVER	ASTM A 216 Gr WCB
TRIMS	13 Cr
MFG STD	MARCK / 015
INSP & TEST STD	MARCK / 015
ENDS	FLANGED TO DIN 2532 / 2533
HYD-TEST PRESSURE	BODY : 854 Psig (60 Kg / Cm <sup>2</sup> ) SEAT : 569 Psig (40 Kg / Cm <sup>2</sup> )
<b>SIZE RANGE</b>	<b>25 MM to 65 MM</b>



## CAST IRON ACCESSIBLE FEED CHECK VALVE PN 10 RATING OUT SIDE SCREW & YOKE TYPE BOLTED BONNET

ITEM NO. 79

BODY / COVER	IS 210 Gr FG 200/220
TRIMS	13 Cr
MFG STD	MARCK / 015 & IBR
INSP & TEST STD	MARCK / 015 & IBR
ENDS	FLANGED TO DIN 2545
HYD-TEST PRESSURE	BODY : 213 Psig (15 Kg/Cm <sup>2</sup> ) SEAT : 142 Psig (10 Kg/Cm <sup>2</sup> )
<b>SIZE RANGE</b>	<b>25 MM to 65 MM</b>



ITEM NO. 80



## CAST STEEL SAFETY VALVE STRAIGHT PATTERN SPRING LOADED BOLTED BONNET

BODY	ASTM A 216 Gr WCB
TRIMS	13 Cr STEEL / 18 Cr 8 Ni
SPRING	SPRING STEEL
MFG STD	MARCK / 013
INSP & TEST STD	MARCK / 013
MAX. SET PRESSURE	14 Kg/Cm <sup>2</sup>
ENDS	FLANGED TO DIN 2545
HYD-TEST PRESSURE	BODY : 854 Psig (60 Kg/Cm <sup>2</sup> )
<b>SIZE RANGE</b>	<b>25 MM TO 150 MM</b>

ITEM NO. 81



## CAST STEEL SAFETY VALVE ANGLE PATTERN ORDINARY LIFT TYPE BOLTED BONNET

BODY	ASTM A 216 Gr WCB
TRIMS	13 Cr / 18 Cr 8 Ni
SPRING	SPRING STEEL / SPRING WIRE
MFG STD	GENERALLY CONFORMING TO API 526
INSP & TEST STD	ASME PTC 25-3/ API 527
MAX. SET PRESSURE	32 Kg/Cm <sup>2</sup> (460 Psig) AT 260°C
ENDS	FLANGED TO DIN 2545 FLANGED TO BS 10 TABLE "H"
<b>SIZE RANGE</b>	<b>25 MM TO 200 MM</b>

ITEM NO. 82



## CAST STEEL SAFETY VALVE ANGLE PATTERN HIGH LIFT TYPE BOLTED BONNET

BODY	ASTM A 216 Gr WCB
TRIMS	13 Cr / 18 Cr 8 Ni
SPRING	SPRING STEEL / SPRING WIRE
MFG STD	GENERALLY CONFORMING TO API 526 & IBR
INSP & TEST STD	ASME PTC 25-3/ API 527
MAX. SET PRESSURE	(STEAM) 17.5 Kg/Cm <sup>2</sup> (250 Psig) AT 427°C
ENDS	INLET : FLANGED TO BS 10 TABLE "H" OUTLET : FLANGED TO BS 10 TABLE "F"
HYD-TEST PRESSURE	BODY : 500 Psig (35 Kg/Cm <sup>2</sup> )
<b>SIZE RANGE</b>	<b>25 MM TO 100 MM</b>

ITEM NO. 82 A

**C.S FULL LIFT SAFETY VALVES ON REQUEST**

# STRAINERS



## CAST STEEL PN 40 - "Y" TYPE STRAINER BOLTED COVER

BODY / COVER	ASTM A 216 Gr WCB
SCREEN	SS 304 / SS 316
MFG STD	MARCK / 014
INSP & TEST STD	MARCK / 014
ENDS	FLANGED TO DIN 2545
HYD-TEST PRESSURE	BODY : 854 Psig (60 Kg/Cm <sup>2</sup> )
<b>SIZE RANGE</b>	<b>25 MM TO 600 MM</b>

ITEM NO. 83



## CAST STEEL ASA 150# - "Y" TYPE STRAINER BOLTED COVER

BODY / COVER	ASTM A 216 Gr WCB
SCREEN	SS 304 / SS 316
MFG STD	MARCK / 014
INSP & TEST STD	MARCK / 014
ENDS	FLANGED TO DIN 2545
HYD-TEST PRESSURE	BODY : 854 Psig (60 Kg/Cm <sup>2</sup> )
<b>SIZE RANGE</b>	<b>15 MM TO 600 MM</b>

ITEM NO. 83 A



## CAST STEEL ASA 300# - "Y" TYPE STRAINER BOLTED COVER

BODY / COVER	ASTM A 216 Gr WCB
SCREEN	SS 304
MFG STD	MARCK / 014
INSP & TEST STD	MARCK / 014
ENDS	FLANGED TO ANSI B 16.5 RF (150#)
HYD-TEST PRESSURE	BODY : 425 Psig (77 Kg/Cm <sup>2</sup> )
<b>SIZE RANGE</b>	<b>25 MM TO 300 MM</b>

ITEM NO. 83 B



## CAST STAINLESS STEEL PN 40 - "Y" TYPE STRAINER BOLTED COVER

BODY / COVER	ASTM A 351 Gr CF8 / CF8M
SCREEN	SS 304 / SS 316
MFG STD	MARCK / 014
INSP & TEST STD	MARCK / 014
ENDS	FLANGED TO DIN 2545
HYD-TEST PRESSURE	BODY : 854 Psig (60 Kg/Cm <sup>2</sup> )
<b>SIZE RANGE</b>	<b>25 MM TO 600 MM</b>

ITEM NO. 84



## CAST STAINLESS STEEL ASA 150# - "Y" TYPE STRAINER BOLTED COVER

BODY / COVER	ASTM A 351 Gr CF8 / CF8M
SCREEN	SS 304 / SS 316
MFG STD	MARCK / 014
INSP & TEST STD	MARCK / 014
ENDS	FLANGED TO DIN 2545
HYD-TEST PRESSURE	BODY : 854 Psig (60 Kg/Cm <sup>2</sup> )
<b>SIZE RANGE</b>	<b>15 MM TO 600 MM</b>

ITEM NO. 84 A



**ITEM NO. 85**



**INVESTMENT CASTING ASA - 150 CLASS "Y" TYPE STRAINER SCREWED COVER**

BODY / COVER	WCB / ASTM A 351 Gr CF8 / CF8M
SCREEN	SS 304 / SS 316
MFG STD	MARCK / 014
INSP & TEST STD	MARCK / 014
ENDS	SCREWED TO BSP / BSPT / NPT SOCKETWELD ENDS TO ANSI B 16.11
HYD-TEST PRESSURE	BODY : 425 Psig (30 Kg/Cm <sup>2</sup> )
<b>SIZE RANGE</b>	<b>15 MM TO 100 MM</b>

**ITEM NO. 85 A**



**FORGED CARBON STEEL "T" - TYPE STRAINER**

BODY	ASTM A 105
SCREEN	SS 316
MFG STD	MARCK / 024
INSP & TEST STD	MARCK / 024
ENDS	SCREWED / SOCKETWELD
HYD. TEST PRESS.	BODY : 3000 Psig (211 Kg / Cm <sup>2</sup> )
<b>SIZE RANGE</b>	<b>15 MM to 50 MM</b>

**ITEM NO. 86**



**CAST IRON "Y" TYPE STRAINER SCREWED / BOLTED COVER**

BODY	IS 210 Gr FG 200/220
SCREEN	BRASS / SS 304
MFG STD	MARCK / 014
INSP & TEST STD	MARCK / 014
ENDS	SCREWED TO BSP / BSPT / NPT FLANGED TO ANSI B 16.1 FF (125 #)
HYD-TEST PRESSURE	BODY : 213 Psig (15 Kg/Cm <sup>2</sup> )
<b>SIZE RANGE</b>	<b>15 MM TO 400 MM</b>

**ITEM NO. 87**



**CAST IRON - POT TYPE STRAINER BOLTED COVER**

BODY / COVER	IS 210 Gr FG 200/220
SCREEN	BRASS / SS 304
MFG STD	MARCK / 014
INSP & TEST STD	MARCK / 014
ENDS	FLANGED TO BS 10 TABLE "E"
HYD-TEST PRESSURE	BODY : 213 Psig (15 Kg/Cm <sup>2</sup> )
<b>SIZE RANGE</b>	<b>40 MM TO 350 MM</b>

**ITEM NO. 88**



**CAST IRON - "T" TYPE (DIRT BOX) BOLTED COVER**

BODY / COVER	IS 210 Gr FG 200/220
SCREEN	BRASS / SS 304
MFG STD	MARCK / 014
TEST STD	MARCK / 014
ENDS	FLANGED TO BS 10 TABLE "E"
HYD-TEST PRESSURE	BODY : 213 Psig (15 Kg/Cm <sup>2</sup> )
<b>SIZE RANGE</b>	<b>40 MM TO 450 MM</b>

# BUTTERFLY VALVES



## CAST IRON "ECOTECH" SERIES CENTRIC DISC DESIGN BUTTERFLY VALVE REPLACEABLE NITRILE SEAT / EPOXY RESIN COATED

ITEM NO. 89

BODY	IS 210 Gr FG 200/220
DISC	IS 210 Gr FG 200/220
SEAT	REPLACEABLE NITRILE
SHAFT	AISI 410 / AISI 304
MFG STD	BS 5155
INSP & TEST STD	BS 6755 / BS 5155
OPERATION	FLOW - CONTROL LEVER / GEAR
ENDS	WAFFER TYPE TO SUIT ANSI B 16.1 (125#)
HYD-TEST PRESSURE	BODY : 225 Psig (16 Kg/Cm <sup>2</sup> ) SEAT : 165 Psig (11.5 Kg/Cm <sup>2</sup> )
<b>SIZE RANGE</b>	<b>40 MM TO 1500 MM</b>



## CAST IRON "ECOTECH" SERIES CENTRIC DISC DESIGN BUTTERFLY VALVE MOULDED NITRILE SEAT / EPOXY RESIN COATED

ITEM NO. 89 A

BODY	IS 210 Gr FG 200/220
DISC	S.G. IRON
SEAT	MOULDED NITRILE
SHAFT	AISI 410 / AISI 304
MFG STD	BS 5155
INSP & TEST STD	BS 6755 / BS 5155
OPERATION	FLOW - CONTROL LEVER / GEAR
ENDS	WAFFER TYPE TO SUIT ANSI B 16.1 (125#)
HYD-TEST PRESSURE	BODY : 225 Psig (16 Kg/Cm <sup>2</sup> ) SEAT : 165 Psig (11.5 Kg/Cm <sup>2</sup> )
<b>SIZE RANGE</b>	<b>40 MM TO 1500 MM</b>



## CAST IRON "ECOTECH" SERIES CENTRIC DISC DESIGN BUTTERFLY VALVE MOULDED NITRILE SEAT / EPOXY RESIN COATED

ITEM NO. 89 B

BODY	IS 210 Gr FG 200/220
DISC	ASTM A 351 Gr CF8 / CF8M
SEAT	MOULDED NITRILE
SHAFT	AISI 304 / AISI 316
MFG STD	BS 5155
TEST STD	BS 6755 / BS 5155
OPERATION	FLOW - CONTROL LEVER / GEAR
ENDS	WAFFER TYPE TO SUIT ANSI B 16.1 (125#)
HYD - TEST PRESSURE	BODY : 225 Psig (16 Kg/Cm <sup>2</sup> ) SEAT : 165 Psig (11.5 Kg/Cm <sup>2</sup> )
<b>SIZE RANGE</b>	<b>40 MM TO 1500 MM</b>



## CAST STEEL "ECOTECH" SERIES CENTRIC DISC DESIGN BUTTERFLY VALVE MOULDED NITRILE SEAT / EPOXY RESIN COATED

ITEM NO. 90

BODY	ASTM A 216 Gr WCB
DISC	ASTM A 216 Gr WCB
SEAT	MOULDED NITRILE
SHAFT	AISI 410/ AISI 304
MFG STD	BS 5155
INSP & TEST STD	BS 6755 / BS 5155
OPERATION	FLOW - CONTROL LEVER / GEAR
ENDS	WAFFER TYPE TO SUIT ANSI B 16.5 (150#)
HYD - TEST PRESSURE	BODY : 300 Psig (24 Kg/Cm <sup>2</sup> ) SEAT : 220 Psig (16 Kg/Cm <sup>2</sup> )
<b>SIZE RANGE</b>	<b>40 MM TO 1500 MM</b>



**ITEM NO. 91**



**CAST IRON ISI MARK "ECOTECH" SERIES CENTRIC DISC DESIGN BUTTERFLY VALVE MOULDED NITRILE SEAT / EPOXY RESIN COATED**

BODY	IS 210 Gr FG 200/ 220
DISC	S.G. IRON / SS 304
SEAT	MOULDED NEOPRENE / NITRILE
SHAFT	AISI 410 / AISI 304
MFG STD	BS 5155 / IS 13095
INSP & TEST STD	BS 6755
OPERATION	FLOW - CONTROL LEVER / GEAR
ENDS	WAFER TYPE TO SUIT ANSI B 16.5
HYD - TEST PRESSURE	BODY : 225 Psig (16 Kg/Cm <sup>2</sup> ) SEAT : 165 Psig (11.5 Kg/Cm <sup>2</sup> )

**SIZE RANGE 40 MM TO 1500 MM**

**ITEM NO. 92**



**INVESTMENT CASTING CF8 "ECOTECH" SERIES CENTRIC DISC DESIGN BUTTERFLY VALVE MOULDED NITRILE SEAT / EPOXY RESIN COATED**

BODY	ASTM A 351 Gr CF8
DISC	ASTM A 351 Gr CF8 / CF8M
SEAT	MOULDED NITRILE
SHAFT	AISI 410 / AISI 304
MFG STD	BS 5155
TEST STD	BS 6755 / BS 5155
OPERATION	FLOW - CONTROL LEVER / GEAR
ENDS	WAFER TYPE TO SUIT ANSI B 16.5 (150#)
HYD - TEST PRESSURE	BODY : 300 Psig (21 Kg/Cm <sup>2</sup> ) SEAT : 220 Psig (15.5 Kg/Cm <sup>2</sup> )

**SIZE RANGE 40 MM TO 300 MM**

**ITEM NO. 92 A**



**INVESTMENT CASTING CF8M "ECOTECH" SERIES CENTRIC DISC DESIGN BUTTERFLY VALVE MOULDED NITRILE SEAT / EPOXY RESIN COATED**

BODY	ASTM A 351 Gr CF8M
DISC	ASTM A 351 Gr CF8M
SEAT	MOULDED NITRILE
SHAFT	AISI 410 / AISI 304
MFG STD	BS 5155
TEST STD	BS 6755 / BS 5155
OPERATION	FLOW - CONTROL LEVER / GEAR
ENDS	WAFER TYPE TO SUIT ANSI B 16.5 (150#)
HYD - TEST PRESSURE	BODY : 300 Psig (21 Kg/Cm <sup>2</sup> ) SEAT : 220 Psig (15.5 Kg/Cm <sup>2</sup> )

**SIZE RANGE 40 MM TO 300 MM**

**ITEM NO. 92 B**



**SPARE FOR "ECOTECH BUTTERFLY VALVE" MOULDING SEAT**

# BUTTERFLY VALVES



## CAST IRON 2PC DESIGN PTFE / PFA / FEP LINED MUFFLER BUTTERFLY VALVE

ITEM NO. 93

BODY	IS 210 Gr FG 200/220 / WCB / CF8 / CF8M
DISC	ASTM A 351 Gr CF8 / CF8M
SEAT	PTFE MUFFLER
SHAFT	AISI 304 / AISI 316
MFG STD	BS 5155
INSP & TEST STD	BS 6755 / BS 5155
OPERATION	FLOW - CONTROL LEVER / GEAR
ENDS	WAFFER TYPE TO SUIT ANSI B 16.1 (125#)
HYD - TEST PRESSURE	BODY : 225 Psig (16 Kg/Cm <sup>2</sup> ) SEAT : 165 Psig (11.5 Kg/Cm <sup>2</sup> )
<b>SIZE RANGE</b>	<b>50 MM TO 600 MM</b>



## OFF-SET DISC DESIGN BUTTERFLY VALVE DOUBLE FLANGE

ITEM NO. 94

BODY	C.I / D.I / C.S / CF8 / CF8M
DISC	C.I / D.I / C.S / CF8 / CF8M
BODY SEAT	SS 304 / SS 316
DISC SEAL	NITRILE / EPDM / VITON
SHAFT	AISI 410 / AISI 304 / AISI 316
BEARING BUSH	PTFE / GUN METAL
MFG STD	BS EN-593 (BS 5155)/AWWA C-504/API 609/IS 13095
INSP & TEST STD	EN 12266-1 / AWWA C-504 / API 598
OPERATION	GEAR OPERATED
ENDS	DOUBLE FLANGED END TO IS 1538/ANSI B 16.5 (150#) B 16.47 (SERIES-A/B) / BS 4504 / IS 6392
HYD-TEST PRESSURE	BODY : 225 Psig (16 Kg/Cm <sup>2</sup> ) SEAT : 165 Psig (11.5 Kg/Cm <sup>2</sup> )
<b>SIZE RANGE</b>	<b>50 MM TO 1800 MM</b>



## OFF-SET DISC DESIGN BUTTERFLY VALVE WAFER TYPE

ITEM NO. 94 A

BODY	C.I / D.I / C.S / CF8 / CF8M
DISC	C.I / D.I / C.S / CF8 / CF8M
SEAT	NITRILE
SHAFT	AISI 410 / AISI 304 / AISI 316
BEARING BUSH	PTFE / GUN METAL
MFG STD	API 609
INSP & TEST STD	API 598
OPERATION	FLOW CONTROL GEAR OPERATED
ENDS	WAFFER TYPE TO IS 1538 / B 16.5 (150#)
HYD-TEST PRESSURE	BODY : 225 Psig (16 Kg/Cm <sup>2</sup> ) SEAT : 165 Psig (11.5 Kg/Cm <sup>2</sup> )
<b>SIZE RANGE</b>	<b>65 MM TO 1800 MM</b>



## SPHERICAL DISC HIGH PERFORMANCE BUTTERFLY VALVE - ASA 150 CLASS

ITEM NO. 95

BODY	WCB / CF8 / CF8M
DISC	ASTM A 351 Gr CF8 / CF8M
SEAT	PTFE / GRAPHITE FILLED PTFE / GLASS FILLED PTFE
SHAFT	AISI 410 / AISI 304 / AISI 316
MFG STD	API 609
INSP & TEST STD	API 598
OPERATION	FLOW CONTROL LEVER / GEAR OPERATED
ENDS	WAFFER TYPE TO SUIT ANSI B 16.5 (150#)
HYD-TEST PRESSURE	BODY : 300 Psig (21 Kg/Cm <sup>2</sup> ) SEAT : 160 Psig (11 Kg/Cm <sup>2</sup> )
<b>SIZE RANGE</b>	<b>40 MM TO 1200 MM</b>



**ITEM NO. 95 A**



**SPHERICAL DISC HIGH PERFORMANCE BUTTERFLY VALVE - ASA 300 CLASS**

BODY	WCB / CF8 / CF8M
DISC	ASTM A 351 Gr CF8 / CF8M
SEAT	PTFE / GRAPHITE FILLED PTFE / GLASS FILLED PTFE
SHAFT	AISI 410 / AISI 304 / AISI 316
MFG STD	API 609
INSP & TEST STD	API 598
OPERATION	FLOW CONTROL LEVER / GEAR OPERATED
ENDS	WAFER TYPE TO SUIT ANSI B 16.5 (150#)
HYD-TEST PRESSURE	BODY : 1100 Psig (77 Kg/Cm <sup>2</sup> ) SEAT : 800 Psig (56 Kg/Cm <sup>2</sup> )
<b>SIZE RANGE</b>	<b>40 MM TO 1200 MM</b>

**ITEM NO. 95 B**



**INVESTMENT CASTING HIGH PERFORMANCE "SMT" MODEL BUTTERFLY VALVE REPLACEABLE SEAL DESIGN**

BODY	WCB / ASTM A 351 Gr CF8 / CF8M
DISC	ASTM A 351 Gr CF8 / CF8M
SEAT	METAL TO METAL
INSP & TEST STD	BS 6755 / BS 5155
LEAKAGE CLASS	CLASS VI AS PER 16.104 (TIGHT SHUT OFF)
OPERATION	FLOW - CONTROL LEVER / GEAR
ENDS	WAFER TYPE TO SUIT ANSI B 16.5 (150#)
HYD - TEST PRESSURE	BODY : 225 Psig (16 Kg/Cm <sup>2</sup> ) SEAT : 165 Psig (11.5 Kg/Cm <sup>2</sup> )
<b>SIZE RANGE</b>	<b>50 MM TO 300 MM</b>

**ITEM NO. 96**



**CAST IRON DAMPER BUTTERFLY VALVE WAFER TYPE**

BODY	IS 210 Gr FG 200 / 220 / ASTM A 216 Gr WCB
DISC	ASTM A 351 Gr CF8 / CF8M
SEAT	METAL TO METAL
INSP & TEST STD	BS 6755 / BS 5155
LEAKAGE CLASS	CLASS IV AS PER 16.104
OPERATION	FLOW - CONTROL LEVER / GEAR
ENDS	WAFER TYPE TO SUIT ANSI B 16.5 (150#)
RATING	PN - 10
<b>SIZE RANGE</b>	<b>40 MM TO 500 MM</b>

**ITEM NO. 97**



**FABRICATED BUTTERFLY VALVE OFF-SET DISC DESIGN**

BODY	IS 2062 Gr B (M.S.) / IS 2002
DISC	IS 2062 Gr B (M.S.) / IS 2002
SHAFT	AISI 410 / AISI 304 / AISI 316
DISC SEAL	NITRILE / EPDM / VITON
BODY SEAT	SS 304 / SS 316
LEAKAGE CLASS	CLASS VI AS PER B16.104
ENDS	AS PER AWWA C-207 CLASS B / D
PRESSURE RATING	PN 6 / PN 10
FACE TO FACE	AS PER AWWA C-504 (ABOVE 1800 MM AS PER MFR. STD.)
OPERATING TEMPERATURE	-50° C TO 250° C
<b>SIZE RANGE</b>	<b>300 MM TO 2600 MM</b>

# INVESTMENT CASTING BALL VALVES



## SS INVESTMENT CASTING SINGLE PIECE DESIGN BALL VALVE

ITEM NO. 98

BODY	ASTM A 351 Gr CF8 / CF8M
BALL	ASTM A 351 Gr CF8 / CF8M
STEM	AISI 304 / AISI 316
SEAT & SEALS	PTFE
BLOW OUT PROOF STEM	FLOATING BALL FULL BORE
MFG STD	GENERALLY CONFORMING TO BS 5351
TESTING	BS 6755
PRESS. TEMP RATING	CONFORM TO TABLE 3 OF BS 5351
LEVER	AISI 304 WITH PVC SLEEVE
ENDS	SCREWED TO BSP / BSPT / NPT / IS 554 SOCKETWELD TO ANSI B 16.11
<b>SIZE RANGE</b>	<b>8 MM TO 100 MM</b>



## SS INVESTMENT CASTING THREE PIECE DESIGN BALL VALVE

ITEM NO. 99

BODY	ASTM A 351 Gr CF8 / CF8M
BALL	ASTM A 351 Gr CF8 / CF8M
STEM	AISI 304 / AISI 316
SEAT & SEALS	PTFE
BLOW OUT PROOF STEM	FLOATING BALL FULL BORE
MFG STD	GENERALLY CONFORMING TO BS 5351
TESTING	BS 6755
PRESS. TEMP RATING	CONFORM TO TABLE 3 OF BS 5351
LEVER	AISI 304 WITH PVC SLEEVE
ENDS	SCREWED TO BSP / BSPT / NPT / IS 554 SOCKETWELD TO ANSI B 16.11
<b>SIZE RANGE</b>	<b>15 MM TO 100 MM</b>



## SS INVESTMENT CASTING THREE PIECE DESIGN BALL VALVE - TABLE "E" / "F"

ITEM NO. 100

BODY	ASTM A 351 Gr CF8 / CF8M
BALL	ASTM A 351 Gr CF8 / CF8M
STEM	AISI 304 / AISI 316
SEAT & SEALS	PTFE
BLOW OUT PROOF STEM	FLOATING BALL FULL BORE
MFG STD	GENERALLY CONFORMING TO BS 5351
TESTING	BS 6755
PRESS. TEMP RATING	CONFORM TO TABLE 3 OF BS 5351
LEVER	AISI 304 WITH PVC SLEEVE
ENDS	FLANGED TO BS 10 TABLE "E" / "F"
<b>SIZE RANGE</b>	<b>15 MM TO 100 MM</b>



**ITEM NO. 98 A**



**SS INVESTMENT CASTING "ECO" BALL VALVE  
SINGLE PIECE DESIGN**

BODY	ASTM A 351 Gr CF8 / CF8M
BALL	ASTM A 351 Gr CF8 / CF8M
STEM	AISI 304 / AISI 316
SEAT & SEALS	PTFE
BLOW OUT PROOF STEM	FLOATING BALL FULL BORE
MFG STD	GENERALLY CONFORMING TO BS 5351
TESTING	BS 6755
PRESS. TEMP RATING	CONFORM TO TABLE 3 OF BS 5351
LEVER	AISI 304 WITH PVC SLEEVE
ENDS	SCREWED TO BSP / BSPT / NPT / IS 554 SOCKETWELD TO ANSI B 16.11
<b>SIZE RANGE</b>	<b>15 MM TO 100 MM</b>

**ITEM NO. 99 A**



**SS INVESTMENT CASTING "ECO" BALL VALVE  
THREE PIECE DESIGN**

BODY	ASTM A 351 Gr CF8 / CF8M
BALL	ASTM A 351 Gr CF8 / CF8M
STEM	AISI 304 / AISI 316
SEAT & SEALS	PTFE
BLOW OUT PROOF STEM	FLOATING BALL FULL BORE
MFG STD	GENERALLY CONFORMING TO BS 5351
TESTING	BS 6755
PRESS. TEMP RATING	CONFORM TO TABLE 3 OF BS 5351
LEVER	AISI 304 WITH PVC SLEEVE
ENDS	SCREWED TO BSP / BSPT / NPT / IS 554 SOCKETWELD TO ANSI B 16.11
<b>SIZE RANGE</b>	<b>15 MM TO 100 MM</b>

**ITEM NO. 100 A**



**SS INVESTMENT CASTING THREE PIECE DESIGN -  
ASA 150 CLASS**

BODY	ASTM A 351 Gr CF8 / CF8M
BALL	ASTM A 351 Gr CF8 / CF8M
STEM	AISI 304 / AISI 316
SEAT & SEALS	PTFE
BLOW OUT PROOF STEM	FLOATING BALL FULL BORE
MFG STD	GENERALLY CONFORMING TO BS 5351
TESTING	BS 6755
PRESS. TEMP RATING	CONFORM TO TABLE 3 OF BS 5351
LEVER	AISI 304 WITH PVC SLEEVE
ENDS	FLANGED TO ASA 150#
<b>SIZE RANGE</b>	<b>15 MM TO 100 MM</b>

# INVESTMENT CASTING BALL VALVES



**CANCELLED**

ITEM NO. 98 AA  
ITEM NO. 99 AA  
ITEM NO. 100 AA  
ITEM NO. 101

## INVESTMENT CASTING 800# BALL VALVE THREE PIECE DESIGN /REGULAR BORE

BODY	ASTM A 351 Gr CF8 / CF8M / 216 Gr WCB
BALL	ASTM A 351 Gr CF8 / CF8M / 216 Gr WCB
ENDS	SCREWED END / SOCKETWELD END
HYDRO TEST PRESSURE	BODY : 104 Kg/Cm <sup>2</sup> SEAT : 70 Kg/Cm <sup>2</sup>
AIR TEST	7 Kg/Cm <sup>2</sup>
<b>SIZE RANGE</b>	<b>15 MM TO 50 MM</b>

ITEM NO. 102  
ITEM NO. 103  
ITEM NO. 104



**ITEM NO. 105**



**CAST IRON SINGLE PIECE DESIGN BALL VALVE S/E & F/E 125#  
BLOW-OUT PROOF STEM, FLOATING BALL FULL PORT**

BODY	IS 210 Gr FG 200/220
BALL	AISI 304 / ASTM A 351 Gr CF8
STEM	AISI 304
SEAT & SEALS	PTFE
MFG STD	GENERALLY CONFORMING TO BS 5159
TESTING	BS 6755/ BS 5159
LEVER	CARBON STEEL WITH PVC SLEEVE
ENDS	SCREWED TO BSP / BSPT / NPT FLANGED TO BS 10 TABLE "F" FLANGED TO ANSI B 16.1 FF (125#)
HYDR - TEST PRESSURE	BODY : 225 Psig (16 Kg/Cm <sup>2</sup> ) SEAT : 165 Psig (11.5 Kg/Cm <sup>2</sup> )
<b>SIZE RANGE</b>	<b>15 MM TO 100 MM</b>

**ITEM NO. 106**



**SS 304 SINGLE PIECE DESIGN BALL VALVE S/E & S/W 150#  
BLOW - OUT PROOF STEM, FLOATING BALL FULL PORT**

BODY	AISI 304
BALL	AISI 304 / ASTM A 351 Gr CF8
STEM	AISI 304
SEAT & SEALS	PTFE
MFG STD	GENERALLY CONFORMING TO BS 5351
TESTING	BS 6755
LEVER	CARBON STEEL ZINC PLATED WITH PVC SLEEVE
ENDS	SCREWED TO BSP / BSPT / NPT SOCKETWELD TO ANSI B 16.11
HYDR - TEST PRESSURE	BODY : 425 Psig (30 Kg/Cm <sup>2</sup> ) SEAT : 300 Psig (21 Kg/Cm <sup>2</sup> )
<b>SIZE RANGE</b>	<b>8 MM TO 100 MM</b>

**ITEM NO. 107**



**SS 304 SINGLE PIECE DESIGN BALL VALVE F/E 150#  
BLOW-OUT PROOF STEM FLOATING BALL FULL PORT**

BODY	AISI 304
BALL	AISI 304 / ASTM A 351 Gr CF8
STEM	AISI 304
SEAT & SEALS	PTFE
MFG STD	GENERALLY CONFORMING TO BS 5351
TESTING	BS 6755
LEVER	CARBON STEEL ZINC PLATED WITH PVC SLEEVE
ENDS	FLANGED TO BS 10 TABLE "F"
HYDR-TEST PRESSURE	BODY : 425 Psig (30 Kg/Cm <sup>2</sup> ) SEAT : 300 Psig (21 Kg/Cm <sup>2</sup> )
<b>SIZE RANGE</b>	<b>15 MM TO 100 MM</b>

# BALL VALVES



## SS 316 SINGLE PIECE DESIGN BALL VALVE S/E & S/W 150# BLOW-OUT PROOF STEM, FLOATING BALL FULL PORT

ITEM NO. 108

BODY	AISI 316
BALL	AISI 316 / ASTM A 351 Gr CF8M
STEM	AISI 316
SEAT & SEALS	PTFE
MFG STD	GENERALLY CONFORMING TO BS 5351
TESTING	BS 6755
LEVER	CARBON STEEL ZINC PLATED WITH PVC SLEEVE
ENDS	SCREWED TO BSP / BSPT / NPT SOCKETWELD ENDS TO ANSI B 16.11
HYDR-TEST PRESSURE	BODY : 425 Psig (30 Kg/Cm <sup>2</sup> ) SEAT : 300 Psig (21 Kg/Cm <sup>2</sup> )
<b>SIZE RANGE</b>	<b>8 MM TO 50 MM</b>



## SS 316 SINGLE PIECE DESIGN BALL VALVE F/E ASA 150# BLOW-OUT PROOF STEM, FLOATING BALL FULL PORT

ITEM NO. 109

BODY	AISI 316
BALL	AISI 316 / ASTM 351 Gr CF8M
STEM	AISI 316
SEAT & SEALS	PTFE
MFG STD	GENERALLY CONFORMING TO BS 5351
TESTING	BS 6755
LEVER	CARBON STEEL ZINC PLATED WITH PVC SLEEVE
ENDS	FLANGED TO BS 10 TABLE "F" FLANGED TO ANSI B 16.5 RF (150#)
HYDR - TEST PRESSURE	BODY : 425 Psig (30 Kg/Cm <sup>2</sup> ) SEAT : 300 Psig (21 Kg/Cm <sup>2</sup> )
<b>SIZE RANGE</b>	<b>15 MM TO 100 MM</b>



## CARBON STEEL (MS) SINGLE PIECE DESIGN BALL VALVE S/E & S/W 150# BLOW-OUT PROOF STEM FLOATING BALL FULL PORT

ITEM NO. 110

BODY	EN 8
BALL	AISI 304 / ASTM A 351 Gr CF8
STEM	AISI 304
SEAT & SEALS	PTFE
MFG STD	GENERALLY CONFORMING TO BS 5351
TESTING	BS 6755
LEVERSLEEVE	CARBON STEEL ZINC PLATED WITH PVC SLEEVE
ENDS	SCREWED TO BSP/BSPT/NPT SOCKETWELD TO ANSI B 16.11
HYDR-TEST PRESSURE	BODY : 425 Psig (30 Kg/Cm <sup>2</sup> ) SEAT : 300 Psig (21 Kg/Cm <sup>2</sup> )
<b>SIZE RANGE</b>	<b>15 MM TO 100 MM</b>



**ITEM NO. 111**



**CARBON STEEL (MS) SINGLE PIECE DESIGN BALL VALVE F/E 150# BLOW-OUT PROOF STEM FLOATING BALL FULL PORT**

BODY	EN 8
BALL	AISI 304 / ASTM A 351 Gr CF8
STEM	AISI 304
SEAT & SEALS	PTFE
MFG STD	GENERALLY CONFORMING TO BS 5351
TESTING	BS 6755
LEVER	CARBON STEEL ZINC PLATED WITH PVC SLEEVE
ENDS	FLANGED TO BS 10 TABLE "F"
	FLANGED TO ANSI B 16.5 RF (150#)
HYDR-TEST PRESSURE	BODY : 425 Psig (30 Kg/Cm <sup>2</sup> ) SEAT : 300 Psig (21 Kg/Cm <sup>2</sup> )
<b>SIZE RANGE</b>	<b>15 MM TO 100 MM</b>

**ITEM NO. 112**



**CAST IRON THREE PIECE DESIGN BALL VALVE S/E 125# BLOW-OUT PROOF STEM FLOATING BALL FULL PORT**

BODY	IS 210 Gr FG 200/220
BALL	AISI 304 / ASTM A 351 Gr CF8
STEM	AISI 304
SEAT & SEALS	PTFE
MFG STD	GENERALLY CONFORMING TO BS 5159
TESTING	BS 6755 / BS 5159
LEVER	CARBON STEEL WITH PVC SLEEVE
ENDS	SCREWED TO BSP / BSPT / NPT
HYDR - TEST PRESSURE	BODY : 225 Psig (16 Kg/Cm <sup>2</sup> ) SEAT : 165 Psig (11.5 Kg/Cm <sup>2</sup> )
<b>SIZE RANGE</b>	<b>15 MM TO 100 MM</b>

**ITEM NO. 113**



**CAST IRON THREE PIECE DESIGN BALL VALVE F/E 125# BLOW-OUT PROOF STEM FLOATING BALL FULL PORT**

BODY	IS 210 Gr FG 200/220
BALL	AISI 304 / ASTM A 351 Gr CF8
STEM	AISI 304
SEAT & SEALS	PTFE
MFG STD	GENERALLY CONFORMING TO BS 5159
TESTING	BS 6755/ BS 5159
LEVER	CARBON STEEL WITH PVC SLEEVE
ENDS	FLANGED TO ANSI B 16.1 FF (125#)
	FLANGED TO BS 10 TABLE "E"
HYDR-TEST PRESSURE	BODY : 225 Psig (16 Kg/Cm <sup>2</sup> ) SEAT : 165 Psig (11.5 Kg/Cm <sup>2</sup> )
<b>SIZE RANGE</b>	<b>15 MM TO 300 MM</b>

# BALL VALVES



## SS 304 THREE PIECE DESIGN BALL VALVE S/E & S/W 150# BLOW-OUT PROOF STEM FLOATING BALL FULL PORT

ITEM NO. 114

BODY	AISI 304
BALL	AISI 304 / ASTM A 351 Gr CF8
STEM	AISI 304
SEAT & SEALS	PTFE
MFG STD	GENERALLY CONFORMING TO BS 5351
TESTING	BS 6755
LEVER	MS ZINC PLATED WITH PVC SLEEVE
ENDS	SCREWED TO BSP / BSPT / NPT SOCKETWELD TO ANSI B 16.11
HYDR-TEST PRESSURE	BODY : 425 Psig (30 Kg/Cm <sup>2</sup> ) SEAT : 300 Psig (21 Kg/Cm <sup>2</sup> )
<b>SIZE RANGE</b>	<b>15 MM TO 100 MM</b>



## SS 304 THREE PIECE DESIGN BALL VALVE F/E 150# BLOW-OUT PROOF STEM, FLOATING BALL FULL/REDUCED PORT

ITEM NO. 115

BODY	AISI 304
BALL	AISI 304 / ASTM A 351 Gr CF8
STEM	AISI 304
SEAT & SEALS	PTFE
MFG STD	GENERALLY CONFORMING TO BS 5351
TESTING	BS 6755
LEVER	MS ZINC PLATED WITH PVC SLEEVE
ENDS	FLANGED TO BS 10 TABLE "F" FLANGED TO ANSI B 16.5 RF (150#)
HYDR-TEST PRESSURE	BODY : 425 Psig (30 Kg/Cm <sup>2</sup> ) SEAT : 300 Psig (21 Kg/Cm <sup>2</sup> )
<b>SIZE RANGE</b>	<b>15 MM TO 300 MM</b>



## SS 304 L / 316 L THREE PRICE DESIGN BALL VALVE F/E 150# BLOW-OUT PROOF STEM, FLOATING BALL FULL/REDUCED PORT

ITEM NO. 116

BODY	AISI 304L / AISI 316L / ASTM A 351 Gr CF3 / CF3M
BALL	AISI 304L / AISI 316L / ASTM A 351 Gr CF3 / CF3M
STEM	AISI 304L
SEAT & SEALS	PTFE
MFG STD	GENERALLY CONFORMING TO BS 5351
TESTING	BS 6755
LEVER	CARBON STEEL ZINC PLATED WITH PVC SLEEVE
ENDS	FLANGED TO BS 10 TABLE "F" FLANGED TO ANSI B 16.5 RF (150#)
HYDR-TEST PRESSURE	BODY : 425 Psig (30 Kg/Cm <sup>2</sup> ) SEAT : 300 Psig (21 Kg/Cm <sup>2</sup> )
<b>SIZE RANGE</b>	<b>15 MM TO 200 MM</b>



**ITEM NO. 117**



**SS 316 THREE PIECE DESIGN BALL VALVE S/E & S/W 150# BLOW OUT PROOF STEM, FLOATING BALL FULL PORT**

BODY	AISI 316
BALL	AISI 316 / ASTM A 351 Gr CF8M
STEM	AISI 316
SEAT & SEALS	PTFE
MFG STD	GENERALLY CONFORMING TO BS 5351
TESTING	BS 6755
LEVER	MS ZINC PLATED WITH PVC SLEEVE
ENDS	SCREWED TO BSP / BSPT / NPT SOCKETWELD TO ANSI B 16.11
HYDR-TEST PRESSURE	BODY : 425 Psig (30 Kg/Cm <sup>2</sup> ) SEAT : 300 Psig (21 Kg/Cm <sup>2</sup> )
<b>SIZE RANGE</b>	<b>15 MM TO 50 MM</b>

**ITEM NO. 118**



**SS 316 THREE PIECE DESIGN BALL VALVE F/E 150# BLOW OUT PROOF STEM, FLOATING BALL FULL REDUCED PORT**

BODY	AISI 316
BALL	AISI 316 / ASTM A 351 Gr CF8M
STEM	AISI 316
SEAT & SEALS	PTFE
MFG STD	GENERALLY CONFORMING TO BS 5351
TESTING	BS 6755
LEVER	MS ZINC PLATED WITH PVC SLEEVE
ENDS	FLANGED TO BS 10 TABLE "F" FLANGED TO ANSI B 16.5 RF (150#)
HYDR-TEST PRESSURE	BODY : 425 Psig (30 Kg/Cm <sup>2</sup> ) SEAT : 300 Psig (21 Kg/Cm <sup>2</sup> )
<b>SIZE RANGE</b>	<b>15 MM TO 150 MM</b>

**ITEM NO. 119**



**CAST STEEL 2 PIECE DESIGN BLOW-OUT PROOF STEM, FLOATING BALL FULL PORT / REDUCE PORT BALL VALVE 150#**

BODY	ASTM A 216 Gr WCB
BALL	AISI 304 / ASTM A 351 Gr CF8
STEM	AISI 304
SEAT & SEAL	PTFE
MFG. STD	GENERALLY CONFORMING TO BS 5351
TEST STD	BS 6755
LEVER	CARBON STEEL WITH PVC SLEEVE
ENDS	FLANGED TO ANSI B 16.5 (150#)
HYD-TEST PRESSURE	BODY : 425 Psig (30 Kg/Cm <sup>2</sup> ) SEAT : 300 Psig (21 Kg/Cm <sup>2</sup> )
<b>SIZE RANGE</b>	<b>15 MM TO 600 MM</b>

# BALL VALVES



## CAST STEEL 2 PIECE DESIGN BLOW-OUT PROOF STEM FLOATING BALL FULL PORT / REDUCE PORT BALL VALVE 300#

ITEM NO. 120

BODY	ASTM A 216 Gr WCB
BALL	AISI 304 / ASTM A 351 Gr CF8
STEM	AISI 304
SEAT & SEAL	PTFE
MFG. STD	GENERALLY CONFORMING TO BS 5351
TEST STD	BS 6755
LEVER	CARBON STEEL WITH PVC SLEEVE
ENDS	FLANGED TO ANSI B 16.5 RF (300#)
HYD-TEST PRESSURE	BODY : 1100 Psig (77 Kg/Cm <sup>2</sup> )
PNEUMATIC TEST PRESSURE	SEAT : 100 Psig (7 Kg/Cm <sup>2</sup> )
<b>SIZE RANGE</b>	<b>15 MM TO 600 MM</b>



## CAST STEEL THREE PIECE DESIGN BLOW-OUT PROOF STEM, FLOATING BALL FULL PORT / REDUCE PORT BALL VALVE 300#

ITEM NO. 121

BODY	ASTM A 216 Gr WCB
BALL	AISI 304 / ASTM A 351 Gr CF8
STEM	AISI 304
SEAT & SEAL	PTFE
MFG. STD	GENERALLY CONFORMING TO BS 5351
TEST STD	BS 6755
LEVER	CARBON STEEL WITH PVC SLEEVE
ENDS	FLANGED TO ANSI B 16.5 RF (300#)
HYD-TEST PRESSURE	BODY : 1100 Psig (77 Kg/Cm <sup>2</sup> )
PNEUMATIC TEST PRESSURE	SEAT : 100 Psig (7 Kg/Cm <sup>2</sup> )
<b>SIZE RANGE</b>	<b>15 MM TO 600 MM</b>



## CARBON STEEL (M/S) THREE PIECE DESIGN BALL VALVE S/E & S/W 150# BLOW-OUT PROOF STEM, FLOATING BALL FULL PORT

ITEM NO. 122

BODY	EN 8
BALL	AISI 304 / ASTM A 351 Gr CF8
STEM	AISI 304
SEAT & SEALS	PTFE
MFG STD	GENERALLY CONFORMING TO BS 5351
TESTING	BS 6755
LEVER	CARBON STEEL WITH PVC SLEEVE
ENDS	SCREWED TO BSP / BSPT / NPT SOCKETWELD TO ANSI B 16.11
HYDR-TEST PRESSURE	BODY : 425 Psig (30 Kg/Cm <sup>2</sup> ) SEAT : 300 Psig (21 Kg/Cm <sup>2</sup> )
<b>SIZE RANGE</b>	<b>8 MM TO 80 MM</b>



**ITEM NO. 123**



**CARBON STEEL (MS) THREE PIECE DESIGN BALL VALVE F/E 150# BLOW-OUT PROOF STEM, FLOATING BALL FULL/REDUCED PORT**

BODY	EN 8
BALL	AISI 304 / ASTM A 351 Gr CF8
STEM	AISI 304
SEAT & SEALS	PTFE
MFG STD	GENERALLY CONFORMING TO BS 5351
TESTING	BS 6755
LEVER	CARBON STEEL WITH PVC SLEEVE
ENDS	FLANGED TO BS 10 TABLE "F" FLANGED TO ANSI B 16.5 RF (150#)
HYDR-TEST PRESSURE	BODY : 425 Psig (30 Kg/Cm <sup>2</sup> ) SEAT : 300 Psig (21 Kg/Cm <sup>2</sup> )
<b>SIZE RANGE</b>	<b>8 MM TO 100 MM</b>

**ITEM NO. 124**



**CAST STEEL THREE PIECE DESIGN BALL VALVE S/E & S/W 150# BLOW-OUT PROOF STEM. FLOATING BALL FULL PORT**

BODY	ASTM A 216 Gr WCB
BALL	ASTM A 304 / ASTM A 351 Gr CF8
STEM	AISI 304
SEAT & SEALS	PTFE
MFG STD	GENERALLY CONFORMING TO BS 5351
TESTING	BS 6755
LEVER	CARBON STEEL WITH PVC SLEEVE
ENDS	SCREWED TO BSP / BSPT / NPT SOCKETWELD TO ANSI B 16.11
HYDR-TEST PRESSURE	BODY : 425 Psig (30 Kg/Cm <sup>2</sup> ) SEAT : 300 Psig (21 Kg/Cm <sup>2</sup> )
<b>SIZE RANGE</b>	<b>15 MM TO 100 MM</b>

**ITEM NO. 125**



**CAST STEEL THREE PIECE DESIGN BALL VALVE F/E 150# BLOW-OUT PROOF STEM, FLOATING BALL FULL/REDUCED PORT**

BODY	ASTM A 216 Gr WCB
BALL	AISI 304 / ASTM A 351 Gr CF8
STEM	AISI 304
SEAT & SEALS	PTFE
MFG STD	GENERALLY CONFORMING TO BS 5351
TESTING	BS 6755
LEVER	CARBON STEEL WITH PVC SLEEVE
ENDS	FLANGED TO BS 10 TABLE "F" FLANGED TO ANSI B 16.5 RF (150#)
HYDR-TEST PRESSURE	BODY : 425 Psig (30 Kg/Cm <sup>2</sup> ) SEAT : 300 Psig (21 Kg/Cm <sup>2</sup> )
<b>SIZE RANGE</b>	<b>15 MM TO 600 MM</b>

# BALL VALVES



## CAST S/STEEL 2 PIECE DESIGN BLOW-OUT PROOF STEM FLOATING BALL FULL / REDUCE PORT BALL VALVE ASA 150#/300#

ITEM NO. 126

BODY	ASTM A 351 Gr CF8
BALL	AISI 304 / ASTM A 351 Gr CF8
STEM	AISI 304
SEAT & SEAL	PTFE
MFG. STD	GENERALLY CONFORMING TO BS 5351
TEST STD	BS 6755
LEVER	S/STEEL WITH PVC SLEEVE
ENDS	FLANGED TO ANSI B 16.5 (150#/300#)
HYD-TEST PRESSURE	BODY : 1100 Psig (77 Kg/Cm <sup>2</sup> )
PNEUMATIC TEST PRESSURE	SEAT : 100 Psig (7 Kg/Cm <sup>2</sup> )
<b>SIZE RANGE</b>	<b>15 MM TO 600 MM</b>



## CAST S/STEEL 3 PIECE DESIGN BLOW-OUT PROOF STEM FLOATING BALL FULL / REDUCE PORT BALL VALVE ASA 150#/300#

ITEM NO. 127

BODY	ASTM A 351 Gr CF8
BALL	AISI 304 / ASTM A 351 Gr CF8
STEM	AISI 304
SEAT & SEAL	PTFE
MFG. STD	GENERALLY CONFORMING TO BS 5351
TEST STD	BS 6755
LEVER	S/STEEL WITH PVC SLEEVE
ENDS	FLANGED TO ANSI B 16.5 (150#/300#)
HYD-TEST PRESSURE	BODY : 1100 Psig (77 Kg/Cm <sup>2</sup> )
PNEUMATIC TEST PRESSURE	SEAT : 100 Psig (7 Kg/Cm <sup>2</sup> )
<b>SIZE RANGE</b>	<b>15 MM TO 600 MM</b>



## CAST S/STEEL 2 PIECE DESIGN BLOW-OUT PROOF STEM FLOATING BALL FULL / REDUCE PORT BALL VALVE ASA 150#/300#

ITEM NO. 128

BODY	ASTM A 351 Gr CF8M
BALL	AISI 316 / ASTM A 351 Gr CF8M
STEM	AISI 316
SEAT & SEAL	PTFE
MFG. STD	GENERALLY CONFORMING TO BS 5351
TEST STD	BS 6755
LEVER	S/STEEL WITH PVC SLEEVE
ENDS	FLANGED TO ANSI B 16.5 (150#/300#)
HYD-TEST PRESSURE	BODY : 1100 Psig (77 Kg/Cm <sup>2</sup> )
PNEUMATIC TEST PRESSURE	SEAT : 100 Psig (7 Kg/Cm <sup>2</sup> )
<b>SIZE RANGE</b>	<b>15 MM TO 600 MM</b>



**ITEM NO. 129**



**CAST S/STEEL 3 PIECE DESIGN BLOW-OUT PROOF STEM  
FLOATING BALL FULL / REDUCE PORT BALL VALVE ASA 150#/300#**

BODY	ASTM A 351 Gr CF8M
BALL	AISI 316 / ASTM A 351 Gr CF8M
STEM	AISI 316
SEAT & SEAL	PTFE
MFG. STD	GENERALLY CONFORMING TO BS 5351
TEST STD	BS 6755
LEVER	S/STEEL WITH PVC SLEEVE
ENDS	FLANGED TO ANSI B 16.5 (150#/300#)
HYD-TEST PRESSURE	BODY : 1100 Psig (77 Kg/Cm <sup>2</sup> )
PNEUMATIC TEST PRESSURE	SEAT : 100 Psig (7 Kg/Cm <sup>2</sup> )
<b>SIZE RANGE</b>	<b>15 MM TO 600 MM</b>

**ITEM NO. 130**



**CAST S/STEEL 2 PIECE DESIGN BLOW-OUT PROOF STEM  
FLOATING BALL FULL / REDUCE PORT BALL VALVE ASA 150#/300#**

BODY	ASTM A 351 Gr CF3
BALL	AISI 304 L / ASTM A 351 Gr CF3
STEM	AISI 304L
SEAT & SEAL	PTFE
MFG. STD	GENERALLY CONFORMING TO BS 5351
TEST STD	BS 6755
LEVER	S/STEEL WITH PVC SLEEVE
ENDS	FLANGED TO ANSI B 16.5 (150#/300#)
HYD-TEST PRESSURE	BODY : 1100 Psig (77 Kg/Cm <sup>2</sup> )
PNEUMATIC TEST PRESSURE	SEAT : 100 Psig (7 Kg/Cm <sup>2</sup> )
<b>SIZE RANGE</b>	<b>15 MM TO 600 MM</b>

**ITEM NO. 131**



**CAST S/STEEL 3 PIECE DESIGN BLOW-OUT PROOF STEM  
FLOATING BALL FULL / REDUCE PORT BALL VALVE ASA 150#/300#**

BODY	ASTM A 351 Gr CF3
BALL	AISI 304 L / ASTM A 351 Gr CF3
STEM	AISI 304L
SEAT & SEAL	PTFE
MFG. STD	GENERALLY CONFORMING TO BS 5351
TEST STD	BS 6755
LEVER	S/STEEL WITH PVC SLEEVE
ENDS	FLANGED TO ANSI B 16.5 (150#/300#)
HYD-TEST PRESSURE	BODY : 1100 Psig (77 Kg/Cm <sup>2</sup> )
PNEUMATIC TEST PRESSURE	SEAT : 100 Psig (7 Kg/Cm <sup>2</sup> )
<b>SIZE RANGE</b>	<b>15 MM TO 600 MM</b>

# BALL VALVES / POLYPROPYLENE BALL VALVES



## CAST S/STEEL 2 PIECE DESIGN BLOW-OUT PROOF STEM FLOATING BALL FULL / REDUCE PORT BALL VALVE ASA 150#/300#

ITEM NO. 132

BODY	ASTM A 351 Gr CF3M
BALL	AISI 316 L / ASTM A 351 Gr CF3M
STEM	AISI 316L
SEAT & SEAL	PTFE
MFG. STD	GENERALLY CONFORMING TO BS 5351
TEST STD	BS 6755
ENDS	FLANGED TO ANSI B 16.5 (150#/300#)
HYD-TEST PRESSURE	BODY : 1100 Psig (77 Kg/Cm <sup>2</sup> )
PNEUMATIC TEST PRESSURE	SEAT : 100 Psig (7 Kg/Cm <sup>2</sup> )
<b>SIZE RANGE</b>	<b>15 MM TO 600 MM</b>



## CAST S/STEEL 3 PIECE DESIGN BLOW-OUT PROOF STEM FLOATING BALL FULL / REDUCE PORT BALL VALVE ASA 150#/300#

ITEM NO. 133

BODY	ASTM A 351 Gr CF3M
BALL	AISI 316 L / ASTM A 351 Gr CF3M
STEM	AISI 316L
SEAT & SEAL	PTFE
MFG. STD	GENERALLY CONFORMING TO BS 5351
TEST STD	BS 6755
ENDS	FLANGED TO ANSI B 16.5 (150#/300#)
HYD-TEST PRESSURE	BODY : 1100 Psig (77 Kg/Cm <sup>2</sup> )
PNEUMATIC TEST PRESSURE	SEAT : 100 Psig (7 Kg/Cm <sup>2</sup> )
<b>SIZE RANGE</b>	<b>15 MM TO 600 MM</b>



## POLYPROPYLENE THREE PIECE DESIGN BALL VALVE BLOW-OUT PROOF STEM. FLOATING BALL FULL PORT

ITEM NO. 134

BODY	POLYPROPYLENE
BALL & STEM	POLYPROPYLENE
SEAT & SEALS	PTFE
MFG STD	MARCK/024
TESTING	MARCK/024
ENDS	SCREWED TO BSP
HYDR-TEST PRESSURE	BODY : 225 Psig (16 Kg/Cm <sup>2</sup> ) SEAT : 165 Psig (11.5 Kg/Cm <sup>2</sup> )
<b>SIZE RANGE</b>	<b>15 MM TO 100 MM</b>



## POLYPROPYLENE THREE PIECE DESIGN BALL VALVE BLOW-OUT PROOF STEM, FLOATING BALL FULL PORT

ITEM NO. 135

BODY	POLYPROPYLENE
BALL & STEM	POLYPROPYLENE
SEAT & SEALS	PTFE
MFG STD	MARCK/024
TESTING	MARCK/024
ENDS	FLANGED TO BS 10 TABLE "E" FLANGED TO BS 10 TABLE "F" FLANGED TO ANSI B16.5 RF (150#)
HYDR-TEST PRESSURE	BODY : 225 Psig (16 Kg/Cm <sup>2</sup> ) SEAT : 165 Psig (11.5 Kg/Cm <sup>2</sup> )
<b>SIZE RANGE</b>	<b>15 MM TO 300 MM</b>



# FORGED STEEL BALL VALVES

ITEM NO. 136



## FORGED CARBON STEEL 3 PIECE DESIGN BALL VALVE BLOW OUT PROOF FLOATING BALL REDUCED PORT

BODY	ASTM A 105
BALL	AISI 304 / ASTM A 351 Gr CF8
STEM	AISI 304
SEAT & SEALS	PTFE
MFG STD	BS 5351 / BS 5159
INSP. & TEST STD	BS 6755
LEVER	SS 304 WITH PVC SLEEVE
ENDS	SCREWED TO BSP / BSPT / NPT SOCKETWELD ENDS TO ANSI B 16.11
HYD-TEST PRESSURE	BODY : 211 Kg/cm <sup>2</sup> SEAT : 70.38 Kg/cm <sup>2</sup> FOR 15MM TO 25MM 51 Kg/cm <sup>2</sup> FOR 32MM TO 50MM
<b>SIZE RANGE</b>	<b>15 MM TO 50 MM</b>

ITEM NO. 136 A



## FORGED STAINLESS STEEL 3 PIECE DESIGN BALL VALVE BLOW OUT PROOF FLOATING BALL REDUCED PORT

BODY	ASTM A 182 Gr F 304 / F 316
BALL	AISI 304 / AISI 316
STEM	AISI 304 / AISI 316
SEAT & SEALS	PTFE
MFG STD	BS 5351 / BS 5159
INSP. & TEST STD	BS 6755
LEVER	SS 304 WITH PVC SLEEVE
ENDS	SCREWED TO BSP / BSPT / NPT SOCKETWELD ENDS TO ANSI B 16.11
HYD-TEST PRESSURE	BODY : 211 Kg/cm <sup>2</sup> SEAT : 70.38 Kg/cm <sup>2</sup> FOR 15MM TO 25MM 51 Kg/cm <sup>2</sup> FOR 32MM TO 50MM
<b>SIZE RANGE</b>	<b>15MM TO 50MM</b>

ITEM NO. 137

**CANCELLED**

# 3 WAY BALL VALVES



## STAINLESS STEEL 304/ I C CF8M 3-WAY BALL VALVE ASA 150 CLASS BLOW-OUT PROOF STEM, FLOATING BALL FULL PORT

ITEM NO. 138

BODY	AISI 304 / ASTM A 351 Gr CF8M
BALL	AISI 304 / ASTM A 351 Gr CF8M
STEM	AISI 304 / AISI 316
SEAT & SEALS	PTFE
MFG STD	GENERALLY CONFORMING TO BS 5351
TESTING	GENERALLY CONFORMING TO BS 6755 (PART - II)
LEVER	MS ZINC PLATED WITH PVC SLEEVE
ENDS	SCREWED TO BSP
HYDR-TEST PRESSURE	BODY : 15 Kg/Cm <sup>2</sup> SEAT : 10 Kg/Cm <sup>2</sup>
<b>SIZE RANGE</b>	<b>15 MM TO 100 MM</b>



## STAINLESS STEEL 304/316 3-WAY BALL VALVE ASA 150 CLASS BLOW-OUT PROOF STEM, FLOATING BALL FULL PORT

ITEM NO. 139

BODY	AISI 304 / AISI 316
BALL	AISI 304 / AISI 316
STEM	AISI 304 / AISI 316
SEAT & SEALS	PTFE
MFG STD	GENERALLY CONFORMING TO BS 5351
TESTING	GENERALLY CONFORMING TO BS 6755
LEVER	MS ZINC PLATED WITH PVC SLEEVE
ENDS	FLANGED TO BS 10 TABLE "F" FLANGED TO ANSI B 16.5 RF (150#)
HYDR-TEST PRESSURE	BODY : 425 Psig (30 Kg/Cm <sup>2</sup> ) SEAT : 300 Psig (21 Kg/Cm <sup>2</sup> )
<b>SIZE RANGE</b>	<b>15 MM TO 200 MM</b>



## CAST IRON 3-WAY BALL VALVE ASA 125 CLASS, BLOW-OUT PROOF STEM, FLOATING BALL FULL PORT

ITEM NO. 140

BODY	IS 210 Gr FG 200
BALL	AISI 304
SEAT & SEALS	PTFE
MFG STD	GENERALLY CONFORMING TO BS 5159
TESTING	GENERALLY CONFORMING TO BS 6755 / BS 5159
LEVER	CARBON STEEL WITH PVC SLEEVE
ENDS	SCREWED TO BSP
HYDR-TEST PRESSURE	BODY : 225 Psig (16 Kg/Cm <sup>2</sup> ) SEAT : 165 Psig (11.5 Kg/Cm <sup>2</sup> )
<b>SIZE RANGE</b>	<b>15 MM TO 100 MM</b>



## CAST IRON 3-WAY BALL VALVE ASA 125 CLASS, BLOW-OUT PROOF STEM, FLOATING BALL FULL PORT

ITEM NO. 141

BODY	IS 210 Gr FG 200
BALL	AISI 304
STEM	AISI 304
SEAT & SEALS	PTFE
MFG STD	GENERALLY CONFORMING TO BS 5159
INSP & TEST STD	GENERALLY CONFORMING TO BS 6755/ BS 5159
LEVER	CARBON STEEL WITH PVC SLEEVE
ENDS	FLANGED TO ANSI B 16.1 FF (125#)
HYDR-TEST PRESSURE	BODY : 225 Psig (16 Kg/Cm <sup>2</sup> ) SEAT : 165 Psig (11.5 Kg/Cm <sup>2</sup> )
<b>SIZE RANGE</b>	<b>15 MM TO 100 MM</b>



**ITEM NO. 142**



**CAST STEEL 3 WAY / 4 WAY BALL VALVE ASA 150 CLASS BLOW-OUT PROOF STEM, FLOATING BALL FULL PORT**

BODY	ASTM A 216 Gr WCB
BALL	AISI 304 / ASTM A 351 Gr CF8
STEM	AISI 304
SEAT & SEALS	PTFE
MFG STD	GENERALLY CONFORMING TO BS 5351
TESTING	GENERALLY CONFORMING TO BS 6755
LEVER	CARBON STEEL WITH PVC SLEEVE
ENDS	FLANGED (L / T PORT) TO ANSI B 16.5 RF 150#
HYDR-TEST PRESSURE	BODY : 425 Psig (30 Kg/Cm <sup>2</sup> ) SEAT : 300 Psig (21 Kg/Cm <sup>2</sup> )
<b>SIZE RANGE</b>	<b>15 MM to 200 MM</b>

**ITEM NO. 143**



**CAST S/STEEL (CF8) 3-WAY / 4-WAY BALL VALVE ASA 150 CLASS BLOW-OUT PROOF STEM, FLOATING BALL FULL PORT**

BODY	ASTM A 351 Gr CF8
BALL	AISI 304 / ASTM A 351 Gr CF8
STEM	AISI 304
SEAT & SEALS	PTFE
MFG STD	GENERALLY CONFORMING TO BS 5351
TESTING	GENERALLY CONFORMING TO BS 6755
LEVER	CARBON STEEL WITH PVC SLEEVE
ENDS	FLANGED (L / T PORT) TO ANSI B 16.5 RF 150#
HYDR-TEST PRESSURE	BODY : 425 Psig (30 Kg/Cm <sup>2</sup> ) SEAT : 300 Psig (21 Kg/Cm <sup>2</sup> )
<b>SIZE RANGE</b>	<b>15 MM to 200 MM</b>

**ITEM NO. 144**



**CAST S/STEEL (CF8M) 3-WAY / 4-WAY BALL VALVE ASA 150 CLASS BLOW-OUT PROOF STEM, FLOATING BALL FULL PORT**

BODY	ASTM A 351 Gr CF8M
BALL	AISI 316 / ASTM A 351 Gr CF8M
STEM	AISI 316
SEAT & SEALS	PTFE
MFG STD	GENERALLY CONFORMING TO BS 5351
TESTING	GENERALLY CONFORMING TO BS 6755
LEVER	CARBON STEEL WITH PVC SLEEVE
ENDS	FLANGED (L / T PORT) TO ANSI B 16.5 RF 150#
HYDR-TEST PRESSURE	BODY : 425 Psig (30 Kg/Cm <sup>2</sup> ) SEAT : 300 Psig (21 Kg/Cm <sup>2</sup> )
<b>SIZE RANGE</b>	<b>15 MM to 200 MM</b>

# 3 WAY / JACKETED BALL VALVES / CONTROL VALVES



## BALL VALVE SINGLE PIECE FLANGED END FULL PORT, FLANGES AS PER ASA 150# OR TABLE "F" ALL VALVES WITH M.S. JACKET

ITEM NO. 144 A

## C.I. / WCB / CF8 / CF8M / 2 PC DESIGN JACKETED BALL VALVE ASA 150 CLASS 3 WAY / BLOW-OUT PROOF STEM, FLOATING BALL FULL PORT

ITEM NO. 144 B

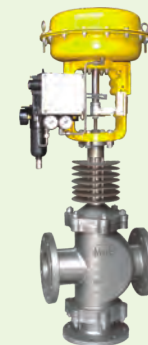
BODY	C.I. / WCB / CF8 / CF8 / CF8M
BALL	AISI 304 / ASTM 316
STEM	AISI 304 / ASTM 316
SEAT & SEAL	PTFE
MFG. STD	GENERALLY CONFORMING TO BS 5351
TEST STD	GENERALLY CONFORMING TO BS 6755
LEVER	CARBON STEEL WITH PVC SLEEVE
ENDS	FLANGED TO ANSI B 16.5 RF (150#) & FF FOR C.I.
HYD-TEST PRESSURE	BODY : 425 Psig (30 Kg/Cm <sup>2</sup> ) / FOR C.I. : 15 Kg/Cm <sup>2</sup> SEAT : 300 Psig (21 Kg/Cm <sup>2</sup> ) / FOR C.I. : 10 Kg/Cm <sup>2</sup>
<b>SIZE RANGE</b>	<b>25 MM TO 150 MM</b>



## CAST STEEL-3-WAY PNEUMATIC DIAPHRAGM OPERATED CONTROL VALVE BOLTED BONNET, FOR MIXING / DIVERTING

ITEM NO. 145

BODY	ASTM A 216 Gr WCB
TRIMS	13 Cr / 18 Cr 8 Ni
DIAPHRAGM	RE-INFORCED RUBBER
MFG STD	GENERALLY CONFORMING TO IS 10189 (PART I)
INSP & TEST STD	GENERALLY CONFORMING TO IS 10189 (PART I) / ANSI B 16.104 / FCI 70-2
PRESSURE RATING	150# / 300# / PN 16
ENDS	FLANGED TO ANSI B 16.5 RF (150# / 300#) FLANGED TO DIN 2543 FLANGED TO BS 10 TABLE "F"
HYDR-TEST PRESSURE	BODY : 425 Psig (30 Kg/Cm <sup>2</sup> ) FOR 150# & TABLE "F" BODY : 1100 Psig (79 Kg/Cm <sup>2</sup> ) FOR 300# BODY : 32 Kg/Cm <sup>2</sup> FOR PN16
<b>SIZE RANGE</b>	<b>15 MM TO 300 MM</b>



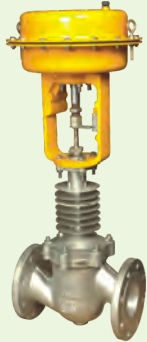
## CAST STEEL-2-WAY PNEUMATIC DIAPHRAGM OPERATED CONTROL VALVE BOLTED BONNET, FOR OPEN/CLOSE OPERATION OR MODULATING

ITEM NO. 146

BODY	ASTM A 216 Gr WCB
TRIMS	13 Cr / 18 Cr 8 Ni
DIAPHRAGM	RE-INFORCED RUBBER
MFG STD	GENERALLY CONFORMING TO IS 10189 (PART 1)
TESTED	GENERALLY CONFORMING TO IS 10189 (PART I) / ANSI B 16.104 / FCI 70-2
PRESSURE RATING	150# / 300# PN 16
ENDS	FLANGED TO ANSI B 16.5 RF (150# / 300#) FLANGED TO DIN 2543 FLANGED TO BS 10 TABLE "F"
HYDR-TEST PRESSURE	BODY : 425 Psig (30 Kg/Cm <sup>2</sup> ) FOR 150# / TABLE "F" BODY : 1100 Psig (79 Kg/Cm <sup>2</sup> ) FOR 300# BODY : 32 Kg/Cm <sup>2</sup> FOR PN16
<b>SIZE RANGE</b>	<b>15 MM TO 300 MM</b>



**ITEM NO. 147**



**CAST IRON-2-WAY PNEUMATIC DIAPHRAGM OPERATED CONTROL VALVE BOLTED BONNET, FOR OPEN/CLOSE OPERATION**

BODY	IS 210 Gr FG 200
TRIMS	13 Cr / 18 Cr 8 Ni
DIAPHRAGM	RE-INFORCED RUBBER
MFG STD	GENERALLY CONFORMING TO IS 10189 (PART I)
TESTING	GENERALLY CONFORMING TO IS 10189 (PART I) ANSI B 16.104 / FCI 70-2
PRESSURE RATING	125# / PN 10
ENDS	FLANGED TO ANSI B 16.1 FF (125#) FLANGED TO DIN 2532 FLANGED TO BS 10 TABLE "F"
HYDR-TEST PRESSURE	BODY : 213 Psig (15 Kg/Cm <sup>2</sup> )
<b>SIZE RANGE</b>	<b>25 MM TO 100 MM</b>

**ITEM NO. 148**



**CAST STEEL-3-WAY MOTORISED CONTROL VALVE BOLTED BONNET**

BODY	ASTM A 216 Gr WCB
TRIMS	13 Cr / 18 Cr 8 Ni
MFG STD	GENERALLY CONFORMING TO IS 10189 (PART I)
TESTING	GENERALLY CONFORMING TO IS 10189 (PART I) / ANSI B 16.104 / FCI 70-2
PRESSURE RATING	150# / 300# / PN 16
ENDS	FLANGED TO ANSI B 16.5 RF (150# / 300#) FLANGED TO DIN 2543 FLANGED TO BS 10 TABLE "F"
HYDR-TEST PRESSURE	BODY : 425 Psig (30 Kg/Cm <sup>2</sup> ) FOR 150# / TABLE "F" BODY : 1100 Psig (79 Kg/Cm <sup>2</sup> ) FOR 300# BODY : 32 Kg/Cm <sup>2</sup> FOR PN16
<b>SIZE RANGE</b>	<b>15 MM TO 300 MM</b>

**ITEM NO. 149**



**CAST STEEL-2-WAY MOTORISED CONTROL VALVE BOLTED BONNET**

BODY	ASTM A 216 Gr WCB
TRIMS	13 Cr / 18 Cr 8 Ni
MFG STD	IS 10189 (PART I)
TESTING	IS 10189 (PART I) ANSI B 16.104 / FCI 70-2
PRESSURE RATING	150# / 300# / PN 16
ENDS	FLANGED TO ANSI B 16.5 RF (150# / 300#) FLANGED TO DIN 2543 FLANGED TO BS 10 TABLE "F"
HYDR-TEST PRESSURE	BODY : 425 Psig (30 Kg/Cm <sup>2</sup> ) FOR 150# / TABLE "F" BODY : 1100 Psig (79 Kg/Cm <sup>2</sup> ) FOR 300# BODY : 32 Kg/Cm <sup>2</sup> FOR PN16
<b>SIZE RANGE</b>	<b>15 MM TO 300 MM</b>

# AIR VALVES



## CAST IRON SINGLE AIR VALVE (H-4)

BODY	IS 210 Gr FG 200
BALL	NEOPRENE COATED TIMBER
MFG STD	MARCK / 016
TESTING	MARCK / 016
MAX C.W.P.	100 Psig (7 Kg/Cm <sup>2</sup> )
ENDS	SCREWED TO BSP
HYDR-TEST PRESSURE	BODY : 225 Psig (16 Kg/Cm <sup>2</sup> )
<b>SIZE RANGE</b>	<b>15 MM TO 100 MM</b>

ITEM NO. 150



## CAST IRON DOUBLE AIR VALVE (H-7)

BODY	IS 210 Gr FG 200
BALL	NEOPRENE COATED TIMBER
MFG STD	MARCK / 016
TESTING	MARCK / 016
MAX C.W.P.	100 Psig (7 Kg/Cm <sup>2</sup> )
ENDS	FLANGED TO BS 10 TABLE "D" FLANGED TO ANSI B 16.1 FF (125#) FLANGED TO IS 1538
HYDR-TEST PRESSURE	BODY : 225 Psig (16 Kg/Cm <sup>2</sup> )
<b>SIZE RANGE</b>	<b>25 MM TO 300 MM</b>

ITEM NO. 151



## CAST IRON DOUBLE AIR VALVE (H-40)

BODY	IS 210 Gr FG 200
TRIMS	AISI 410
BALL	NEOPRENE COATED TIMBER
MFG STD	MARCK / 016
TESTING	MARCK / 016
MAX C.W.P.	100 Psig (7 Kg/Cm <sup>2</sup> )
ENDS	FLANGED TO BS 10 TABLE "D" FLANGED TO ANSI B 16.1 FF (125#) FLANGED TO IS 1538
HYDR-TEST PRESSURE	BODY : 225 Psig (16 Kg/Cm <sup>2</sup> ) SEAT : 165 Psig (11.5 Kg/Cm <sup>2</sup> )
<b>SIZE RANGE</b>	<b>25 MM TO 250 MM</b>

ITEM NO. 152



## CAST IRON DOUBLE AIR VALVE (H-7K)

BODY	IS 210 Gr FG 200
BALL	NEOPRENE COATED TIMBER
MFG STD	MARCK / 016
TESTING	MARCK / 016
MAX C.W.P.	100 Psig (7 Kg/Cm <sup>2</sup> )
ENDS	FLANGED TO BS 10 TABLE "D" FLANGED TO ANSI B 16.1 FF (125#) FLANGED TO IS 1538
HYDR-TEST PRESSURE	BODY : 225 Psig (16 Kg/Cm <sup>2</sup> )
<b>SIZE RANGE</b>	<b>25 MM TO 200 MM</b>

ITEM NO. 153



**ITEM NO. 154**



**CAST IRON KINETIC DOUBLE AIR VALVE (H-42K)**

BODY	IS 210 Gr FG 200
TRIMS	STAINLESS STEEL / GUN METAL
BALL	NEOPRENE COATED TIMBER
MFG STD	MARCK / 016
TESTING	MARCK / 016
MAX C.W.P.	100 Psig (7 Kg/Cm <sup>2</sup> )
ENDS	FLANGED TO BS 10 TABLE "D" FLANGED TO ANSI B 16.1 FF (125#) FLANGED TO IS 1538
HYDR-TEST PRESSURE	BODY : 225 Psig (16 Kg/Cm <sup>2</sup> )
<b>SIZE RANGE</b>	<b>40 MM to 200 MM</b>

**ITEM NO. 154 A**



**TAMPER PROOF AIR VALVE**

BODY / COVER / COWL	CAST IRON, DUCTILE IRON, CAST IRON
SMALL ORIFICE NIPPLE	BRONZE (STANDARD) / STAINLESS STEEL
SMALL ORIFICE BALL	STAINLESS STEEL (STANDARD) / RUBBER LINED SEASONED TIMBER
SEAT RING	NITRILE / EPDM
MFG STD	IS 14845 / MARCK 016
MAX C.W.P.	PN 10 / PN 1.6
ENDS	FLANGED END TO IS 1538 / ANSI B 16.5
HYDR-TEST PRESSURE	BODY : 225 PSIG (15 KG/CM <sup>2</sup> ) BODY : 165 PSIG (11.5 KG/CM <sup>2</sup> )
<b>SIZE RANGE</b>	<b>50 MM TO 200 MM</b>

**ITEM NO. 155**



**SPARE RUBBER BALL FOR AIR VALVES**

<b>SIZE RANGE</b>	<b>40 MM to 250 MM</b>
-------------------	------------------------

# PINCH VALVES



## ALUMINIUM - CLOSE DESIGN PINCH VALVE BOLTED BONNET

ITEM NO. 156

BODY	ALUMINUM
TRIMS	CARBON STEEL
SLEEVE	NEOPRENE
MFG STD	MARCK / 017
TESTING	MARCK / 017
MAX C.W.P.	142 Psig (10 Kg/Cm <sup>2</sup> )
ENDS	FLANGED TO BS 10 TABLE "E" FLANGED TO BS 10 TABLE "F"
HYDR-TEST PRESSURE	BODY : 225 Psig (16 Kg/Cm <sup>2</sup> ) SEAT : 165 Psig (11.5 Kg/Cm <sup>2</sup> )
<b>SIZE RANGE</b>	<b>25 MM TO 150 MM</b>



## CAST IRON - CLOSE DESIGN PINCH VALVE BOLTED BONNET

ITEM NO. 157

BODY	IS 210 Gr FG 200
TRIMS	CARBON STEEL
SLEEVE	NEOPRENE
MFG STD	MARCK / 017
TESTING	MARCK / 017
MAX C.W.P.	142 Psig (10 Kg/Cm <sup>2</sup> )
ENDS	FLANGED TO BS 10 TABLE "E" FLANGED TO DIN 2532 FLANGED TO ANSI B 16.1 FF (125#)
HYDR-TEST PRESSURE	BODY : 225 Psig (16 Kg/Cm <sup>2</sup> ) SEAT : 165 Psig (11.5 Kg/Cm <sup>2</sup> )
<b>SIZE RANGE</b>	<b>25 MM TO 150 MM</b>



## CAST IRON - OPEN DESIGN PINCH VALVE BOLTED BONNET

ITEM NO. 158

BODY	IS 210 Gr FG 200
TRIMS	CARBON STEEL
SLEEVE	NEOPRENE
MFG STD	MARCK / 017
TESTING	MARCK / 017
MAX C.W.P.	142 Psig (10 Kg/Cm <sup>2</sup> )
ENDS	FLANGED TO BS 10 TABLE "E" FLANGED TO BS 10 TABLE "F" FLANGED TO DIN 2532 FLANGED TO ANSI B 16.1 FF (125#)
HYDR-TEST PRESSURE	BODY : 225 Psig (16 Kg/Cm <sup>2</sup> ) SEAT : 165 Psig (11.5 Kg/Cm <sup>2</sup> )
<b>SIZE RANGE</b>	<b>25 MM TO 150 MM</b>



## SPARE NEOPRENE RUBBER SLEEVES FOR OPEN DESIGN PINCH VALVE

ITEM NO. 159

<b>SIZE RANGE</b>	<b>25 MM TO 150 MM</b>
-------------------	------------------------

**ITEM NO. 161**



**CAST IRON COMPACT DESIGN PULP VALVE  
DOUBLE GLAND**

BODY	IS 210 Gr FG 200
TRIMS	AISI 304
WEDGE	SS 304 PLATE
MFG STD	GENERALLY CONFORMING TO MSS SP 81
INSP & TEST STD	GENERALLY CONFORMING TO MSS SP 81
MAX. C.W.P.	100 Psig (7 Kg/Cm <sup>2</sup> )
ENDS	WAFER TYPE SUITABLE FOR BS 10 TABLE "D" / ANSI B 16.1 (125#)
<b>SIZE RANGE</b>	<b>40 MM TO 500 MM</b>

**ITEM NO. 161 A**



**S/STEEL COMPACT DESIGN PULP VALVE DOUBLE GLAND**

BODY	ASTM A 351 Gr CF8 / CF8M
TRIMS	AISI 304 / AISI 316
WEDGE	SS 304 / SS 316 PLATE
MFG STD	GENERALLY CONFORMING TO MSS SP 81
INSP & TEST STD	GENERALLY CONFORMING TO MSS SP 81
MAX. C.W.P.	100 Psig (7 Kg/Cm <sup>2</sup> )
ENDS	WAFER TYPE SUITABLE FOR BS 10 TABLE "D" / ANSI B 16.1 (125#)
<b>SIZE RANGE</b>	<b>50 MM TO 400 MM</b>

**ITEM NO. 162**



**CAST IRON SELF LUBRICATING PLUG  
VALVE-ASA 125 CLASS**

BODY	IS 210 Gr FG 200
PLUG	IS 210 Gr FG 200
MFG STD	GENERALLY CONFORMING TO MSS SP 78/BS 5158
INSP & TEST STD	GENERALLY CONFORMING TO MSS SP 78/BS 6755
MAX C.W.P.	150 Psig (10.54 Kg/Cm <sup>2</sup> )
ENDS	SCREWED TO BSP FLANGED TO BS 10 TABLE "F" FLANGED TO ANSI B 16.1 FF (125#) FLANGED TO DIN 2532
HYDR-TEST PRESSURE	BODY : 225 Psig (16 Kg/Cm <sup>2</sup> ) SEAT : 165 Psig (11.5 Kg/Cm <sup>2</sup> )
<b>SIZE RANGE</b>	<b>15 MM TO 80 MM SCREWED END 15 MM TO 350 MM FLANGED END</b>

# PLUG VALVES / PISTON VALVES



## CAST STEEL SELF LUBRICATING PLUG VALVE-ASA 150 CLASS

ITEM NO. 162 A

BODY	ASTM A 216 Gr WCB
PLUG	ASTM A 216 Gr WCB
MFG STD	GENERALLY CONFORMING TO MSS SP 78/BS 5158
INSP & TEST STD	GENERALLY CONFORMING TO MSS SP 78/BS 6755
MAX C.W.P.	150 Psig (10.54 Kg/Cm <sup>2</sup> )
ENDS	FLANGED TO ANSI B 16.5 RF (150#)
HYDR-TEST PRESSURE	BODY : 225 Psig (16 Kg/Cm <sup>2</sup> ) SEAT : 165 Psig (11.5 Kg/Cm <sup>2</sup> )
<b>SIZE RANGE</b>	<b>15 MM TO 350 MM FLANGED END</b>



## CAST STEEL / CAST IRON CAGE TYPE GLANDLESS PISTON VALVE BOLTED BONNET, RISING STEM

ITEM NO. 163

BODY	ASTM A 216 Gr WCB / IS 210 Gr FG 200
TRIMS	13 Cr
PISTON RING	CAF 40
MFG STD	MARCK / 018
INSP & TEST STD	MARCK / 018
MAX. C.W.P.	175 Psig (12.3 Kg/Cm <sup>2</sup> )
ENDS	FLANGED TO DIN 2533 (PN 16)
HYDR-TEST PRESSURE	BODY : 341 Psig (24 Kg/Cm <sup>2</sup> ) SEAT : 225 Psig (16 Kg/Cm <sup>2</sup> )
<b>SIZE RANGE</b>	<b>15 MM TO 200 MM</b>



## CAST STEEL / CAST IRON CAGE TYPE GLANDLESS PISTON VALVE BOLTED BONNET, RISING STEM IBR

ITEM NO. 163 A

BODY	ASTM A 216 Gr WCB
TRIMS	13 Cr
PISTON RING	CAF 40
MFG STD	MARCK / 018
INSP & TEST STD	MARCK / 018
MAX. C.W.P.	175 Psig (12.3 Kg/Cm <sup>2</sup> )
ENDS	FLANGED TO DIN 2533 (PN 16)
HYDR-TEST PRESSURE	BODY : 341 Psig (24 Kg/Cm <sup>2</sup> ) SEAT : 225 Psig (16 Kg/Cm <sup>2</sup> )
<b>SIZE RANGE</b>	<b>15 MM TO 200 MM</b>



**ITEM NO. 164**



**CAST IRON WRENCH OPERATED RELIEF VALVE  
RIGHT ANGLE TYPE**

BODY	IS 210 Gr FG 200
TRIMS	GUN METAL
SPRING	SPRING STEEL
MFG STD	MARCK / 013
INSP & TEST STD	MARCK / 013
MAX SET PRESSURE	150 Psig AT 176.70 °C
INDICATOR	GUN METAL / CARBON STEEL
ENDS	FLANGED TO BS 10 TABLE "D" / "E"
HYDR-TEST PRESSURE	BODY : 225 Psig (16 Kg/Cm <sup>2</sup> )
<b>SIZE RANGE</b>	<b>25 MM TO 300 MM</b>

**ITEM NO. 165**



**CAST IRON WHEEL OPERATED RELIEF VALVE  
RIGHT ANGLE TYPE**

BODY	IS 210 Gr FG 200
TRIMS	GUN METAL
SPRING	SPRING STEEL
MFG STD	MARCK / 013
INSP & TEST STD	MARCK / 013
MAX SET PRESSURE	150 Psig AT 176.70 °C
INDICATOR	GUN METAL / CARBON STEEL
ENDS	FLANGED TO BS 10 TABLE "D" / "E"
HYDR-TEST PRESSURE	BODY : 225 Psig (16 Kg/Cm <sup>2</sup> )
<b>SIZE RANGE</b>	<b>25 MM TO 300 MM</b>

**ITEM NO. 166**



**CAST IRON / CAST STEEL METALLIC FOOT VALVE**

BODY	IS 210 Gr FG 200
TRIMS	GUN METAL
SCREEN	GREY CAST IRON / GALVANIZED STEEL
MFG STD	IS 4038
INSP & TEST STD	IS 4038
ENDS	FLANGED TO BS 10 TABLE "D" / ASA 150#
HYDR-TEST PRESSURE	BODY : 0.6 MPA SEAT : 0.2 MPA
<b>SIZE RANGE</b>	<b>40 MM TO 600 MM</b>

# SLUICE VALVES / REFLUX VALVES ISI



## CAST IRON SLUICE VALVE BOLTED BONNET NON RISING SPINDLE

ITEM NO. 167

BODY / BONNET	IS 210 Gr FG 200
TRIMS	GUN METAL
MFG STD	50 MM TO 300 MM - IS 780 PN 1.0 / 1.6 300MM - IS 2906 RATING PN 0.4 / 0.6 / 1.0 / 1.6
INSP & TEST STD	50 MM TO 300 MM - IS 780 RATING PN 1.0 / 1.6 300MM - IS 2906 PN 0.4 / 0.6 / 1.0 / 1.6
ENDS	FLANGED TO IS 1538 / ANSI B 16.1 (125#)
HYDR-TEST PRESSURE	RATING : PN 0.4    PN 0.6    PN 1.0    PN 1.6 BODY : 0.6Mpa    0.9Mpa    1.5Mpa    2.4Mpa SEAT : 0.4Mpa    0.6Mpa    1.0Mpa    1.6Mpa
<b>SIZE RANGE</b>	<b>50 MM TO 1800 MM</b>



## CAST IRON SLUICE VALVE BOLTED BONNET NON RISING SPINDLE WITH ISI MARK

ITEM NO. 167 A

BODY / BONNET	IS 210 Gr FG 200
TRIMS	SS 410 / GUN METAL
MFG STD	IS 14846
INSP & TEST STD	IS 14846
ENDS	FLANGED TO IS 1538
HYDR-TEST PRESSURE	RATING : PN 0.4    PN 0.6    PN 1.0 BODY : 0.6Mpa    0.9Mpa    1.5Mpa SEAT : 0.4Mpa    0.6Mpa    1.0Mpa
<b>SIZE RANGE</b>	<b>50 MM TO 600 MM</b>



## CAST IRON REFLUX VALVE BOLTED COVER WITH ISI MARK

ITEM NO. 168

BODY / COVER	IS 210 Gr FG 200
TRIMS	GUN METAL
MFG STD	IS 5312 PART I
INSP & TEST STD	IS 5312 PART I
ENDS	FLANGED TO IS 1538
HYDR-TEST PRESSURE	RATING: PN 0.6    PN 1.0    PN 1.6 BODY : 0.9 Mpa    1.5 Mpa    2.4 Mpa SEAT : 0.6 Mpa    1.0 Mpa    1.6 Mpa
<b>SIZE RANGE</b>	<b>50 MM TO 1000 MM</b>



ITEM NO. 169



## CAST IRON LINED DIAPHRAGM VALVE RUBBER / GLASS / SAUNDER A TYPE

BODY	IS 210 Gr FG 200
LINING	EBONITE RUBBER
DIAPHRAGM	NEOPRENE RUBBER
MFG STD	BS 5156
INSP & TEST STD	BS 6755
ENDS	FLANGED TO DIN 2532
	FLANGED TO BS 10 TABLE "D"
HYDR-TEST PRESSURE	BODY : 213 Psig (15 Kg/Cm <sup>2</sup> )
	SEAT : 142 Psig (10 Kg/Cm <sup>2</sup> )
<b>SIZE RANGE</b>	<b>15 MM TO 200 MM</b>

ITEM NO. 169 A



## S/STEEL INVESTMENT CASTING DIAPHRAGM VALVE

BODY	ASTM A 351 Gr CF8 / CF8M
BONNET	IS 210 Gr FG 200
DIAPHRAGM	NEOPRENE RUBBER / PTFE
ENDS	S/E & T/C
<b>SIZE RANGE</b>	<b>15 MM TO 50 MM</b>

ITEM NO. 169 B



## CAST IRON RUBBER LINED DIAPHRAGM VALVE / SAUNDER A TYPE

BODY	IS 210 Gr FG 200
LINING	EBONITE RUBBER
DIAPHRAGM	NEOPRENE RUBBER
MFG STD	BS 5156
INSP & TEST STD	BS 6755
ENDS	FLANGED TO DIN 2532
	FLANGED TO BS 10 TABLE "D"
	SCREWED BSP
HYDR-TEST PRESSURE	BODY : 213 Psig (15 Kg/Cm <sup>2</sup> )
	SEAT : 142 Psig (10 Kg/Cm <sup>2</sup> )
<b>SIZE RANGE</b>	<b>20 MM TO 200 MM</b>

# TUBE GLASS / ROTARY JOINTS



## CARBON STEEL (MS) TUBE GLASS

FLANGES	CARBON STEEL
GLASS	TOUGHENED BOROSIL
SEAT	PTFE
MFG STD	MARCK / 019
TESTED	100 Psig (7 Kg/Cm <sup>2</sup> )
ENDS	FLANGED TO BS 10 TABLE "F" FLANGED TO ANSI B 16.5 RF (150 #)
<b>SIZE RANGE</b>	<b>15 MM TO 150 MM</b>

ITEM NO. 170



## SS 304 TUBE GLASS

FLANGES	SS 304
GLASS	TOUGHENED BOROSIL
SEAT	PTFE
MFG STD	MARCK / 019
TESTED	100 Psig (7 Kg/Cm <sup>2</sup> )
ENDS	FLANGED TO BS 10 TABLE "F" FLANGED TO ANSI B 16.5 RF (150#)
<b>SIZE RANGE</b>	<b>15 MM TO 150 MM</b>

ITEM NO. 171



## SS 316 TUBE GLASS

FLANGES	SS 316
GLASS	TOUGHENED BOROSIL
SEAT	PTFE
MFG STD	MARCK / 019
TESTED	100 Psig (7 Kg/Cm <sup>2</sup> )
ENDS	FLANGED TO BS 10 TABLE "F" FLANGED TO ANSI B 16.5 RF (150#)
<b>SIZE RANGE</b>	<b>15 MM TO 150 MM</b>

ITEM NO. 172



## SS INVESTMENT CASTING TUBE GLASS

FLANGES	ASTM A 351 Gr CF8 / CF8M
GLASS	TOUGHENED BOROSIL
SEAT	PTFE
MFG STD	MARCK / 019
TESTED	100 Psig (7 Kg/Cm <sup>2</sup> )
ENDS	FLANGED TO BS 10 TABLE "F" FLANGED TO ANSI B 16.5 RF (150#)
<b>SIZE RANGE</b>	<b>15 MM TO 150 MM</b>

ITEM NO. 173



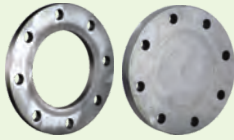
## CAST IRON STEAM ROTARY JOINT WITH INLET AND OUTLET CONNECTION

BODY	IS 210 Gr FG 200
TRIMS	13 Cr
RINGS	GRAPHITE
ENDS	SCREWED TO BSP
<b>SIZE RANGE</b>	<b>15 MM to 100 MM</b>

ITEM NO. 174



**ITEM NO. 175**



**CARBON STEEL (MS) TABLE "H" / ND-40  
SLIP-ON / BLIND**

MOC  
MFG STD

IS 2002 - PLATE  
BS 10 TABLE "H"  
DIN 2545  
BS 10/DIN 2401 (PART I)  
**15 MM TO 2000 MM**

PRESS-TEMP RATING  
**SIZE RANGE**

**ITEM NO. 176 & 177**

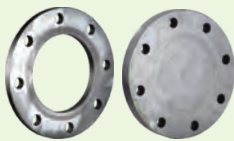


**CARBON STEEL (MS) 150 CLASS / 300 CLASS  
SLIP-ON / BLIND**

MOC  
MFG STD  
PRESS-TEMP RATING  
**SIZE RANGE**

IS 2002 - PLATE  
ANSI B 16.5 (150#) & ANSI B 16.5 (300#)  
ANSI B 16.5 / BS 1560  
**15 MM TO 2000 MM**

**ITEM NO. 178**



**CARBON STEEL (MS) TABLE "K" & "J"  
SLIP-ON/BLIND**

MOC  
MFG STD  
PRESS-TEMP RATING  
**SIZE RANGE**

IS 2002 - PLATE  
BS 10 TABLE "K" / "J"  
BS 10  
**15 MM TO 2000 MM**

**ITEM NO. 179**



**FORGED CARBON STEEL ASA 150 CLASS  
SORF / BLIND / WNR**

MOC  
MFG STD  
PRESS-TEMP RATING  
**SIZE RANGE**

ASTM A 105  
ANSI B 16.5 (150#)  
ANSI B 16.5 / BS 1560  
**15 MM to 300 MM**  
ABOVE 350MM ON REQUEST

**ITEM NO. 180**



**FORGED CARBON STEEL ASA 300 CLASS  
SORF / BLIND / WNR**

MOC  
MFG STD  
PRESS-TEMP RATING  
**SIZE RANGE**

ASTM A 105  
ANSI B 16.5 (300#)  
ANSI B 16.5 / BS 1560  
**15 MM TO 300 MM**  
ABOVE 300 MM ON REQUEST

# IBR APPROVED FITTINGS



## CARBON STEEL (MS) SEAMLESS EXPANSION BEND / LOOP (SCH-40)

MOC FABRICATED CS - SA 106 Gr B  
ENDS FLANGED TO BS 10 TABLE "H"  
FLANGED TO ANSI B 16.5 (150#)  
SIZE RANGE 25 MM TO 200 MM

ITEM NO. 181



## CARBON STEEL (MS) SEAMLESS BEND - LONG RADIUS - 90°

MOC FABRICATED CS - SA 106 Gr B  
ENDS BUTT - WELDABLE  
SIZE RANGE 15 MM TO 300 MM

ITEM NO. 182



## CARBON STEEL (MS) ELBOW - LONG RADIUS - 90°

MOC FABRICATED CS - SA 106 Gr B  
ENDS BUTT - WELDABLE  
SIZE RANGE 15 MM TO 300 MM  
SIZE 350MM TO ABOVE ON REQUEST

ITEM NO. 183



## CARBON STEEL (MS) CONCENTRIC REDUCER (SCH-40)

MOC CARBON STEEL (M.S.)  
ENDS BUTT-WELDABLE  
SIZE RANGE 20 MM X 15 MM TO 200 MM X 150 MM

ITEM NO. 184



**ITEM NO. 185**



**SS FLUSH BOTTOM TANK VALVE  
FLANGED END OUTSIDE YOKE & SPINDLE TYPE**

BODY	ASTM A 351 Gr CF8 / CF8M / CF3M
TRIMS	18 Cr 8 Ni / 18 Cr 10 Ni 2 MO / CF 3M OR AISI 316L
MFG STD	MARCK / 020
TESTING	MARCK / 020
ENDS	FLANGED TO BS 10 TABLE "F" FLANGED TO ANSI B 16.5 RF (150#)
HYD-TEST PRESSURE	BODY : 425 Psig (30 Kg/Cm <sup>2</sup> ) SEAT : 300 Psig (21 Kg/Cm <sup>2</sup> )
<b>SIZE RANGE</b>	<b>25 MM TO 100 MM</b>

**ITEM NO. 186**



**SS FLUSH BOTTOM BALL VALVE FLANGED END**

BODY	ASTM A 351 Gr CF8 / CF8M
BALL	ASTM A 351 Gr CF8 / CF8M
STEM	AISI 304 / AISI 316
SEAT & SEALS	PTFE
BLOW OUT PROOF STEM	FLOATING BALL FULL BORE
MFG STD	GENERALLY CONFORMING TO BS 5351
TESTING	GENERALLY CONFORMING TO BS 6755
PRESS. TEMP RATING	CONFORM TO TABLE 3 OF BS 5351
LEVER	AISI 304 WITH PVC SLEEVE
ENDS	FLANGED TO ASA 150#
<b>SIZE RANGE</b>	<b>50 MM x 50 MM TO 100 MM x 100 MM</b>

**ITEM NO. 187**



**SS 304 / SS 316 NEEDLE VALVE  
SCREWED BONNET SCREWED END**

MOC	AISI 304 / AISI 316
TRIMS	AISI 304 / AISI 316
MFG STD	MARCK / 022
TESTING	MARCK / 022
HAND WHEEL	BAKELITE
ENDS	SCREWED TO BSP / BSPT / NPT SOCKETWELD TO ANSI B 16.11
HYDR-TEST PRESSURE	BODY : 1100 Psig (77 Kg/Cm <sup>2</sup> ) SEAT : 800 Psig (56 Kg/Cm <sup>2</sup> )
<b>SIZE RANGE</b>	<b>8 MM TO 50 MM</b>

# POLYPROPYLENE VALVES



## DIAPHRAGM VALVE

BODY	POLYPROPYLENE
DIAPHRAGM	NEOPRENE RUBBER
TRIMS	CARBON STEEL
ENDS	FLANGED TO BS 10 TABLE 'D'
<b>SIZE RANGE</b>	<b>15 MM TO 150MM</b>

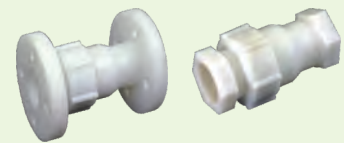
ITEM NO. 190



## NON RETURN VALVE

BODY	ACTACTIC POLYPROPYLENE COPOLYMER
BALL	POLYPROPYLENE
STOP RING	ACTACTIC POLYPROPYLENE
SEAT	PTFE
ENDS	SCREWED TO BSP FLANGED TO BS 10 TABLE 'D'
<b>SIZE RANGE</b>	<b>25 MM to 300 MM</b>

ITEM NO. 191



## FOOT VALVE

BODY	ACTACTIC POLYPROPYLENE COPOLYMER
BALL	POLYPROPYLENE RE-INTORCED
STOP RING	ACTACTIC POLYPROPYLENE
SEAT	PTFE
SCREEN	ACTACTIC POLYPROPYLENE
ENDS	SCREWED TO BSP FLANGED TO BS 10 TABLE 'D'
<b>SIZE RANGE</b>	<b>25 MM to 300 MM</b>

ITEM NO. 192



## SIGHT GLASS

FLANGES	ACTACTIC POLYPROPYLENE COPOLYMER
GLASS	TOUGHENED BOROSIL GLASS
SEAT	PTFE
ENDS	FLANGED TO BS 10 TABLE "E" / "F" FLANGED TO ANSI B 16.5 RF (150#)
<b>SIZE RANGE</b>	<b>15 MM to 300 MM</b>

ITEM NO. 193



ITEM NO. 194

## G.M. GATE VALVE AS PER IS / 778, CL-I



ENDS SCREWED  
 WITH OR WITHOUT ISI MARK  
**SIZE RANGE 15 MM TO 100 MM**

ITEM NO. 195

## G.M. GLOBE VALVE AS PER IS / 778, CL-I



ENDS SCREWED  
 WITH OR WITHOUT ISI MARK  
**SIZE RANGE 15 MM TO 100 MM**

ITEM NO. 196

## G.M. HORIZONTAL NON RETURN VALVE AS PER IS / 778, CL-I



ENDS SCREWED  
 WITH OR WITHOUT ISI MARK  
**SIZE RANGE 15 MM TO 100 MM**

ITEM NO. 197

## G.M. STEAM STOP VALVE

WITH S.S. WORKING PARTS SUITABLE TO 250psig Working Press.



ENDS SCREWED  
**SIZE RANGE 15 MM TO 80 MM**

# G. M. VALVES



## G.M. SPRING SAFETY VALVE OD (OPEN DISCHARGE)

TESTED 0 TO 150 LBS  
ENDS SCREWED  
SIZE RANGE 15 MM TO 80 MM

ITEM NO. 197 A



## G.M. STEAM STOP VALVE

WITH S.S. WORKING PARTS SUITABLE TO 250psig Working Press.  
ENDS FLANGED TABLE 'H'  
SIZE RANGE 15 MM TO 80 MM

ITEM NO. 198



## G.M. SPRING SAFETY VALVE TOTALLY ENCLOSED ANGLE TYPE SCREWED HEAVY QUALITY

TESTED 0 TO 150 LBS  
ENDS SCREWED  
SIZE RANGE 15 MM TO 80 MM

ITEM NO. 198 A



## G.M. NON RETURN VALVE SCREWED END COVER

WITH S.S. WORKING PARTS SUITABLE TO 250psig Working Press.  
ENDS SCREWED  
SIZE RANGE 15 MM TO 80 MM

ITEM NO. 199



ITEM NO. 200



**G.M. NON RETURN VALVE FLANGED END WITH SCREWED COVER AS PER TABLE "H" WITH S.S. WORKING PARTS**

ENDS  
SIZE RANGE

FLANGED  
15 MM TO 80 MM

ITEM NO. 201



**G.M. "Y" TYPE STRAINER**

ENDS  
SIZE RANGE

SCREWED  
15 MM TO 80 MM

ITEM NO. 202



**G.M. "Y" TYPE STRAINER FLANGED END WITH SCREWED COVER AS PER TABLE "E"**

ENDS  
SIZE RANGE

FLANGED  
15 MM TO 100 MM

ITEM NO. 203



**BRASS BALL VALVE (MADE IN ITALY) / (ECO SERIES)  
BRASS BALL VALVE SINGLE PIECE SCREWED END**

SIZE RANGE

8 MM TO 100 MM

ITEM NO. 203 A

**CANCELLED**

# HIGH PRESSURE BALL VALVES



## 150# THREE PIECE DESIGN F/E FULL BORE BALL VALVE WCB / SS 304 / SS 316

ITEM NO. 204

BODY	ASTM A 216 Gr WCB / ASTM A 351 Gr CF8 / CF8M
BALL	ASTM A 351 Gr CF8 ASTM A 351 Gr CF8M
MFG STD	API 6D
FACE TO FACE	API 6D
ENDS	FLANGED END TO ASME B 16.5 RF (150#)
HYD-TEST PRESSURE	BODY : 450 Psig SEAT : 315 Psig
PNEUMATIC PRESSURE	SEAT : 80 Psig
INSPECTION TEST STD.	API 6D
<b>SIZE RANGE</b>	<b>40 MM TO 300 MM</b>



## 300# THREE PIECE DESIGN F/E FULL BORE BALL VALVE WCB / SS 304 / SS 316

ITEM NO. 204 A

BODY	ASTM A 216 Gr WCB / ASTM A 351 Gr CF8 / CF8M
BALL	ASTM A 351 Gr CF8 ASTM A 351 Gr CF8M
MFG STD	API 6D
FACE TO FACE	API 6D
ENDS	FLANGED END TO ASME B 16.5 RF (300#)
HYD-TEST PRESSURE	BODY : 1125 Psig SEAT : 815 Psig
PNEUMATIC PRESSURE	SEAT : 80 Psig
INSPECTION TEST STD.	API 6D
<b>SIZE RANGE</b>	<b>40 MM TO 300 MM</b>



## 400# THREE PIECE DESIGN F/E FULL BORE BALL VALVE WCB / SS 304 / SS 316

ITEM NO. 205

BODY	ASTM A 216 Gr WCB / ASTM A 351 Gr CF8 / CF8M
BALL	ASTM A 351 Gr CF8 ASTM A 351 Gr CF8M
MFG STD	API 6D
FACE TO FACE	API 6D
ENDS	FLANGED END TO ASME B 16.5 RF (400#)
HYD-TEST PRESSURE	BODY : 1500 Psig SEAT : 1090 Psig
PNEUMATIC PRESSURE	SEAT : 80 Psig
INSPECTION TEST STD.	API 6D
<b>SIZE RANGE</b>	<b>40 MM TO 300 MM</b>



ITEM NO. 205 A



## 600# THREE PIECE DESIGN F/E FULL BORE BALL VALVE WCB / SS 304 / SS 316

BODY	ASTM A 216 Gr WCB / ASTM A 351 Gr CF8 / CF8M
BALL	ASTM A 351 Gr CF8 ASTM A 351 Gr CF8M
MFG STD	API 6D
FACE TO FACE	API 6D
ENDS	FLANGED END TO ASME B 16.5 RF (600#)
HYD-TEST PRESSURE	BODY : 2225 Psig SEAT : 1630 Psig
PNEUMATIC PRESSURE	SEAT : 80 Psig
INSPECTION TEST STD.	API 6D
<b>SIZE RANGE</b>	<b>40 MM TO 300 MM</b>

ITEM NO. 206



## 900# THREE PIECE DESIGN F/E FULL BORE BALL VALVE WCB / SS 304 / SS 316

BODY	ASTM A 216 Gr WCB / ASTM A 351 Gr CF8 / CF8M
BALL	ASTM A 351 Gr CF8 ASTM A 351 Gr CF8M
MFG STD	API 6D
FACE TO FACE	API 6D
ENDS	FLANGED END TO ASME B 16.5 RF (900#)
HYD-TEST PRESSURE	BODY : 3350 Psig SEAT : 2445 Psig
PNEUMATIC PRESSURE	SEAT : 80 Psig
INSPECTION TEST STD.	API 6D
<b>SIZE RANGE</b>	<b>40 MM TO 300 MM</b>

ITEM NO. 207



## 1500# THREE PIECE DESIGN F/E FULL BORE BALL VALVE WCB / SS 304 / SS 316

BODY	ASTM A 216 Gr WCB / ASTM A 351 Gr CF8 / CF8M
BALL	ASTM A 351 Gr CF8 ASTM A 351 Gr CF8M
MFG STD	API 6D
FACE TO FACE	API 6D
ENDS	FLANGED END TO ASME B 16.5 RF (1500#)
HYD-TEST PRESSURE	BODY : 5575 Psig SEAT : 4080 Psig
PNEUMATIC PRESSURE	SEAT : 80 Psig
INSPECTION TEST STD.	API 6D
<b>SIZE RANGE</b>	<b>40 MM TO 300 MM</b> <b>80 MM &amp; ABOVE GEAR OPERATION STD</b>

# BLOW DOWN VALVES / I C GATE VALVES



## 2500# THREE PIECE DESIGN F/E FULL BORE BALL VALVE WCB / SS 304 / SS 316

ITEM NO. 208

BODY	ASTM A 216 Gr WCB / ASTM A 351 Gr CF8 / CF8M
BALL	ASTM A 351 Gr CF8 ASTM A 351 Gr CF8M
MFG STD	API 6D
FACE TO FACE	API 6D
ENDS	FLANGED END TO ASME B 16.5 RF (2500#)
HYD-TEST PRESSURE	BODY : 9275 Psig SEAT : 6790 Psig
PNEUMATIC PRESSURE	SEAT : 80 Psig
INSPECTION TEST STD.	API 6D
<b>SIZE RANGE</b>	<b>40 MM TO 300 MM</b> <b>80 MM &amp; ABOVE GEAR OPERATION STD</b>



## CAST STEEL PARALLEL SLIDE BLOWDOWN OFF VALVE FLANGED END

ITEM NO. 209

BODY / BONNET	ASTM A 216 Gr WCB
OPERATING PRESSURE	350 Psig (24.6 Kg/Cm <sup>2</sup> ) at 850 °F (454 °C) TEMP
HYD-TEST PRESSURE	700 Psig (49.2 Kg/Cm <sup>2</sup> )
ENDS	FLANGED END TO BS 10 TABLE - "J"
<b>SIZE RANGE</b>	<b>25 MM TO 65 MM</b>



## INVESTMENT CASTING GATE / GLOBE / LIFT UP TYPE CHECK VALVE

ITEM NO. 210

BODY & WEDGE	ASTM A 351 Gr CF8 / CF8M
TRIMS	AISI 304 / AISI 316
ENDS	SCREWED TO BSP SOCKETWELD END TO ANSI B 16.11
HYD-TEST PRESSURE	BODY : 1100 Psig (77 Kg/Cm <sup>2</sup> ) SEAT : 800 Psig (56 Kg/Cm <sup>2</sup> )
<b>SIZE RANGE</b>	<b>15 MM TO 100 MM</b>



**ITEM NO. 211**



**S.G. IRON FEP / PFA LINED  
WAFER TYPE BUTTERFLY VALVE**

BODY	GGG 40
DISC	CF8 + PFA / FEP LINED
SEAT	PTFE
MFG STD	BS 5155
INSPECTION TEST STD.	BS 6755 ( PART- II)
LINNING THICKNESS	MINIMUM 3.00 MM TO 4.00 MM
	FEP : MAXIMUM 200° C
	PFA : MAXIMUM 260° C
TEMP.	
SPARK TEST	10 KVDC
ENDS	WAFER TYPE TO SUIT ANSI B 16.5 (150#)
HYD-TEST PRESSURE	BODY : 07 Kg/Cm <sup>2</sup>
	SEAT : 07 Kg/Cm <sup>2</sup>
<b>SIZE RANGE</b>	<b>40 MM TO 400 MM</b>

**ITEM NO. 212**



**S.G. IRON FEP / PFA LINED  
TWO PIECE DESIGN BALL VALVE ASA 150#**

BODY	GGG 40 WITH FEP / PFA
BALL	ASTM A 216 216 Gr WCB + FEP / PFA LINED
STEM	ASTM A 216 216 Gr WCB + FEP / PFA LINED
ENDS	FLANGED TO ANSI B 16.5 (150#)
PARTS	ALL WETTED PARTS OF VALVE & RAISED PORTION OF FLANGES WILL BE LINED WITH / FEP / PFA
LINNING THICKNESS	MINIMUM 3.00 MM TO 4.00 MM
TEMP.	FEP : MAXIMUM 200° C
	PFA : MAXIMUM 260° C
SPARK TEST	15 KVDC
HYD-TEST PRESSURE	BODY : 10 Kg/Cm <sup>2</sup>
	SEAT : 10 Kg/Cm <sup>2</sup>
<b>SIZE RANGE</b>	<b>15 MM TO 200 MM</b>

**ITEM NO. 213**



**S.G. IRON FEP / PFA LINED  
PLUG VALVE FLANGED END ASA 150#**

BODY	GGG 40 WITH / FEP / PFA
COVER	GGG 40
PLUG	ASTM A 216 216 Gr WCB + FEP / PFA LINED
DIAPHRAGM	PTFE
ENDS	FLANGED TO ANSI B 16.5 (150#)
PARTS	ALL WETTED PARTS OF VALVE & RAISED PORTION OF FLANGES WILL BE LINED WITH / FEP / PFA
LINNING THICKNESS	MINIMUM 3.00 MM TO 4.00 MM
TEMP.	FEP : MAXIMUM 200° C
	PFA : MAXIMUM 260° C
SPARK TEST	15 KVDC
HYD-TEST PRESSURE	BODY : 10 Kg/Cm <sup>2</sup>
	SEAT : 10 Kg/Cm <sup>2</sup>
<b>SIZE RANGE</b>	<b>15 MM TO 200 MM</b>

# FEP / PFA LINED VALVES



## S.G. IRON FEP / PFA LINED DIAPHRAGM VALVE FLANGED END ASA 150#

BODY	GGG 40 WITH FEP / PFA LINED
BONNET	ASTM A 216 Gr WCB
END	FLANGED TO ANSI B 16.5 (150#)
PARTS	ALL WETTED PARTS OF VALVE & RAISED PORTION OF FLANGES WILL BE LINED WITH / FEP / PFA
LINNING THICKNESS	MINIMUM 3.00 MM TO 4.00 MM
TEMP.	FEP : MAXIMUM 200° C PFA : MAXIMUM 260° C
SPARK TEST	15 KVDC
HYD-TEST PRESSURE	BODY : 10 Kg/Cm <sup>2</sup> SEAT : 10 Kg/Cm <sup>2</sup>
<b>SIZE RANGE</b>	<b>25 MM TO 200 MM</b>

ITEM NO. 214



## FEP / PFA SLEEVE PLUG VALVE FLANGED END TABLE "E" / ASA 150#

BODY	IS 210 Gr FG 200/ 220 / WCB / AISI 304 / AISI 316
PLUG	AISI 304 / AISI 316 WITH PTFE SLEEVE
DIAPHRAGM	PTFE
ENDS	FLANGED TABLE "E"/ ASA 150#
<b>SIZE RANGE</b>	<b>25 MM TO 150 MM</b>

ITEM NO. 215



**CANCELLED**

ITEM NO. 216  
ITEM NO. 217

**ITEM NO. 218**



## INVESTMENT CASTING GATE VALVE ASA 150 CLASS OUT SIDE SCREW & YOKE TYPE BOLTED BONNET

BODY / BONNET	ASTM A 216 Gr WCB / CF8 / CF8M
TRIMS	13 Cr / 18 Cr 8 Ni
MFG STD	API 600
INSP & TEST STD	API 598
ENDS	FLANGED TO ANSI B 16.5 RF (150#)
HYD-TEST PRESSURE	BODY : 425 Psig (30 Kg/Cm <sup>2</sup> ) SEAT : 300 Psig (21 Kg/Cm <sup>2</sup> )
<b>SIZE RANGE</b>	<b>25 MM TO 300 MM</b>

**ITEM NO. 218 A**



## INVESTMENT CASTING GATE VALVE ASA 300 CLASS OUT SIDE SCREW & YOKE TYPE BOLTED BONNET

BODY / BONNET	ASTM A 216 Gr WCB / CF8 / CF8M
TRIMS	13 Cr / 18 Cr 8 Ni
MFG STD	API 600
INSP & TEST STD	API 598
ENDS	FLANGED TO ANSI B 16.5 RF (300#)
HYD-TEST PRESSURE	BODY : 1100 Psig (77 Kg/Cm <sup>2</sup> ) SEAT : 800 Psig (56 Kg/Cm <sup>2</sup> )
<b>SIZE RANGE</b>	<b>25 MM TO 300 MM</b>

**ITEM NO. 219**



## INVESTMENT CASTING GLOBE VALVE ASA 150 CLASS OUT SIDE SCREW & YOKE TYPE BOLTED BONNET

BODY / BONNET	ASTM A 216 Gr WCB / CF8 / CF8M
TRIMS	13 Cr / 18 Cr 8 Ni
MFG STD	BS 1873
INSP & TEST STD	BS 6755
ENDS	FLANGED TO ANSI B 16.5 RF (150#)
HYD-TEST PRESSURE	BODY : 425 Psig (30 Kg/Cm <sup>2</sup> ) SEAT : 300 Psig (21 Kg/Cm <sup>2</sup> )
<b>SIZE RANGE</b>	<b>25 MM TO 300 MM</b>

**ITEM NO. 219 A**



## INVESTMENT CASTING GLOBE VALVE ASA 300 CLASS OUT SIDE SCREW & YOKE TYPE BOLTED BONNET

BODY / BONNET	ASTM A 216 Gr WCB / CF8 / CF8M
TRIMS	13 Cr / 18 Cr 8 Ni
MFG STD	BS 1873
INSP & TEST STD	BS 6755
ENDS	FLANGED TO ANSI B 16.5 RF (300#)
HYD-TEST PRESSURE	BODY : 1100 Psig (77 Kg/Cm <sup>2</sup> ) SEAT : 800 Psig (56 Kg/Cm <sup>2</sup> )
<b>SIZE RANGE</b>	<b>25 MM TO 300 MM</b>

# INVESTMENT CASTING NRV / STRAINERS



## INVESTMENT CASTING NON RETURN VALVE ASA 150 CLASS SWING TYPE BOLTED COVER

BODY / COVER	ASTM A 216 Gr WCB / CF8 / CF8M
TRIMS	13 Cr / 18 Cr 8 Ni
MFG STD	BS 1868
INSP & TEST STD	BS 6755
ENDS	FLANGED TO ANSI B 16.5 RF (150#)
HYD-TEST PRESSURE	BODY : 425 Psig (30 Kg/Cm <sup>2</sup> ) SEAT : 300 Psig (21 Kg/Cm <sup>2</sup> )
<b>SIZE RANGE</b>	<b>25 MM TO 300 MM</b>

ITEM NO. 220



## INVESTMENT CASTING NON RETURN VALVE ASA 300 CLASS SWING TYPE BOLTED COVER

BODY / COVER	ASTM A 216 Gr WCB / CF8 / CF8M
TRIMS	13 Cr / 18 Cr 8 Ni
MFG STD	BS 1868
INSP & TEST STD	BS 6755
ENDS	FLANGED TO ANSI B 16.5 RF (300#)
HYD-TEST PRESSURE	BODY : 1100 Psig (77 Kg/Cm <sup>2</sup> ) SEAT : 800 Psig (56 Kg/Cm <sup>2</sup> )
<b>SIZE RANGE</b>	<b>25 MM TO 300 MM</b>

ITEM NO. 220 A



## INVESTMENT CASTING - ASA 150 CLASS "Y" TYPE STRAINER BOLTED COVER

BODY / COVER	ASTM A 216 Gr WCB / CF8 / CF8M
SCREEN	SS 304 / SS 316
MFG STD	MARCK / 014
INSP & TEST STD	MARCK / 014
ENDS	FLANGED TO ANSI B 16.5 RF (150#)
HYD-TEST PRESSURE	BODY : 425 Psig (30 Kg/Cm <sup>2</sup> )
<b>SIZE RANGE</b>	<b>15 MM TO 300 MM</b>

ITEM NO. 221



## INVESTMENT CASTING - ASA 150 CLASS "T" TYPE STRAINER

BODY / COVER	ASTM A 216 Gr WCB / CF8 / CF8M
SCREEN	SS 304 / SS 316
MFG STD	MARCK / 014
INSP & TEST STD	MARCK / 014
ENDS	FLANGED TO ANSI B 16.5 RF (150#)
HYD-TEST PRESSURE	BODY : 425 Psig (30 Kg/Cm <sup>2</sup> )
<b>SIZE RANGE</b>	<b>15 MM TO 300 MM</b>

ITEM NO. 221 A



ITEM NO. 221 B



## INVESTMENT CASTING GLOBE VALVE ND - 40 RATING OUT SIDE SCREW & YOKE TYPE BOLTED BONNET

BODY / BONNET	ASTM A 216 Gr WCB / CF8 / CF8M
TRIMS	13 Cr / 18 Cr 8 Ni
MFG STD	BS 1873
INSP & TEST STD	BS 6755
ENDS	FLANGED TO ANSI B 16.5 RF (300#)
HYD-TEST PRESSURE	BODY : 854 Psig (60 Kg/Cm <sup>2</sup> ) SEAT : 569 Psig (40 Kg/Cm <sup>2</sup> )

**SIZE RANGE 15 MM TO 150 MM**

ITEM NO. 222



## DOUBLE WINDOW SIGHT GLASS

BODY	WCB / CF8 / CF8M
ENDS	FLANGED TO 150#
MEDIA	STEAM, AIR, WATER, OIL
PRESS.	UP TO 10 Kg/Cm <sup>2</sup>
TEMP.	180 °C
<b>SIZE RANGE</b>	<b>25 MM TO 100 MM</b> <b>150 MM TO 250 MM (FABRICATED)</b>

ITEM NO. 223



## "ZAC" MAKE / CF8 / BALL VALVE / SINGLE PIECE DESIGN / FULL BORE / BALL VALVE / SCREWED END / TESTED TO 1000 PSI

**SIZE RANGE 8 MM TO 100 MM**

ITEM NO. 223 A



## "IMPORTED" MAKE / INVESTMENT CASTING / CF8 / 3 WAY / "L" PORT / "T" PORT / BALL VALVE / SCREWED END.

**SIZE RANGE 15 MM TO 50 MM**

ITEM NO. 224



## "IMPORTED" MAKE / CF8 / SWING CHECK VALVE / SCREWED END / TESTED TO 200 PSI

**SIZE RANGE 15 MM TO 50 MM**

## CAST IRON EQUILIBRIUM BALL FLOAT VALVE WITH COPPER BALL

BODY	IS 210 Gr FG 200 / 220 / 260
TRIMS	13% Cr STEEL
BALL	COPPER
MFG STD	AS PER MARCK
INSP & TEST STD	AS PER MARCK
ENDS	FLANGED END TO ANSI B 16.1 FF (125#)
HYD-TEST PRESSURE	BODY : 225 Psig (16 Kg/Cm <sup>2</sup> ) SEAT : 165 Psig (11.5 Kg/Cm <sup>2</sup> )
<b>SIZE RANGE</b>	<b>50 MM TO 200 MM</b>

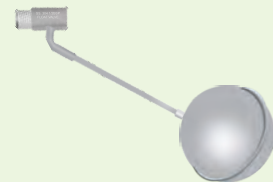
ITEM NO. 225



## S / STEEL FLOAT VALVE / SCREWED END WITH SS BALL

<b>SIZE RANGE</b>	<b>15 MM TO 100 MM</b>
-------------------	------------------------

ITEM NO. 226



## "KITZ" MAKE ALUMINIUM ALLOY BODY SS 316 DISC EPDM SEAT WAFER TYPE BUTTERFLY VALVE LEVER OPERATED

BODY	ALUMINIUM DIE-CAST / EQUIVALENT ASTM B85-84-383.0
NECK	A 351 Gr CF 8
STEM	(EQUIVALENT ASTM A 276 TYPE 410)
DISC	A 351 Gr CF8M
O-RING	EPDM
RUBBER SEAT	EPDM
BOTTOM STEM	(EQUIVALENT ASTM A 276 TYPE 410)
BEARING	POLYPHENYLENE SULFIDE (10XJMEA: SIZE 2" TO 8")
HYD-TEST PRESSURE	BODY : 1.5 Mpa SEAT : 1.1 Mpa
<b>SIZE RANGE</b>	<b>40 MM TO 200 MM</b>

ITEM NO. 227



# "Y" TYPE GLOBE VALVES

ITEM NO. 228



## FORGED CARBON STEEL - ASA 2500 CLASS "Y" TYPE WELDED BONNET GLOBE VALVE

BODY / BONNET	ASTM A 105
TRIMS	13% Cr STEEL + STELLITE-6
MFG STD	API 602
INSP & TEST STD	API 598
ENDS	SOCKETWELD TO ANSI B 16.11 / BUTTWELD END
HYD-TEST PRESSURE	BODY : 9275 Psig (652 Kg/Cm <sup>2</sup> ) SEAT : 6790 Psig (477 Kg/Cm <sup>2</sup> )
<b>SIZE RANGE</b>	<b>15 MM TO 50 MM</b>

ITEM NO. 229



## FORGED STAINLESS STEEL - ASA 2500 CLASS "Y" TYPE WELDED BONNET GLOBE VALVE

BODY / BONNET	ASTM A 182 Gr F 304 / F 304L
TRIMS	18% Cr 8% Ni + STELLITE-6
MFG STD	API 602
INSP & TEST STD	API 598
ENDS	SOCKETWELD TO ANSI B 16.11 / BUTTWELD END
HYD-TEST PRESSURE	BODY : 9275 Psig (652 Kg/Cm <sup>2</sup> ) SEAT : 6790 Psig (477 Kg/Cm <sup>2</sup> )
<b>SIZE RANGE</b>	<b>15 MM TO 50 MM</b>

ITEM NO. 230



## FORGED STAINLESS STEEL - ASA 2500 CLASS "Y" TYPE WELDED BONNET GLOBE VALVE

BODY / BONNET	ASTM A 182 Gr F 316 / F 316L
TRIMS	18% Cr 8% Ni / 18% Cr 10% Ni 2% MO + STELLITE-6
MFG STD	API 602
INSP & TEST STD	API 598
ENDS	SOCKETWELD TO ANSI B 16.11 / BUTTWELD END
HYD-TEST PRESSURE	BODY : 9275 Psig (652 Kg/Cm <sup>2</sup> ) SEAT : 6790 Psig (477 Kg/Cm <sup>2</sup> )
<b>SIZE RANGE</b>	<b>15 MM TO 50 MM</b>

ITEM NO. 231



## FORGED ALLOY STEEL - ASA 2500 CLASS "Y" TYPE WELDED BONNET GLOBE VALVE

BODY / BONNET	ASTM A 182 Gr F 11
TRIMS	13% Cr STEEL + STELLITE-6
MFG STD	API 602
INSP & TEST STD	API 598
ENDS	SOCKETWELD TO ANSI B 16.11 / BUTTWELD END
HYD-TEST PRESSURE	BODY : 9275 Psig (652 Kg/Cm <sup>2</sup> ) SEAT : 6790 Psig (477 Kg/Cm <sup>2</sup> )
<b>SIZE RANGE</b>	<b>15 MM TO 50 MM</b>

# "Y" TYPE GLOBE VALVES / NON RETURN VALVES



## FORGED ALLOY STEEL - ASA 2500 CLASS "Y" TYPE WELDED BONNET GLOBE VALVE

ITEM NO. 232

BODY / BONNET	ASTM A 182 Gr F 22
TRIMS	13% Cr STEEL + STELLITE-6
MFG STD	API 602
INSP & TEST STD	API 598
ENDS	SOCKETWELD TO ANSI B 16.11 / BUTTWELD END
HYD-TEST PRESSURE	BODY : 9275 Psig (652 Kg/Cm <sup>2</sup> ) SEAT : 6790 Psig (477 Kg/Cm <sup>2</sup> )
<b>SIZE RANGE</b>	<b>15 MM TO 50 MM</b>



## FORGED CARBON STEEL - ASA 2500 CLASS "Y" TYPE WELDED COVER NON RETURN VALVE

ITEM NO. 233

BODY / COVER	ASTM A 105
TRIMS	13% Cr STEEL + STELLITE-6
MFG STD	API 602
INSP & TEST STD	API 598
ENDS	SOCKETWELD TO ANSI B 16.11 / BUTTWELD END
HYD-TEST PRESSURE	BODY : 9275 Psig (652 Kg/Cm <sup>2</sup> ) SEAT : 6790 Psig (477 Kg/Cm <sup>2</sup> )
<b>SIZE RANGE</b>	<b>15 MM TO 50 MM</b>



## FORGED STAINLESS STEEL - ASA 2500 CLASS "Y" TYPE WELDED COVER NON RETURN VALVE

ITEM NO. 234

BODY / COVER	ASTM A 182 Gr F 304 / F 304L
TRIMS	18% Cr 8% Ni + STELLITE-6
MFG STD	API 602
INSP & TEST STD	API 598
ENDS	SOCKETWELD TO ANSI B 16.11 / BUTTWELD END
HYD-TEST PRESSURE	BODY : 9275 Psig (652 Kg/Cm <sup>2</sup> ) SEAT : 6790 Psig (477 Kg/Cm <sup>2</sup> )
<b>SIZE RANGE</b>	<b>15 MM TO 50 MM</b>



## FORGED STAINLESS STEEL - ASA 2500 CLASS "Y" TYPE WELDED COVER NON RETURN VALVE

ITEM NO. 235

BODY / COVER	ASTM A 182 Gr F 316 / F 316L
TRIMS	18% Cr 10% Ni 2% MO + STELLITE-6
MFG STD	API 602
INSP & TEST STD	API 598
ENDS	SOCKETWELD TO ANSI B 16.11 / BUTTWELD END
HYD-TEST PRESSURE	BODY : 9275 Psig (652 Kg/Cm <sup>2</sup> ) SEAT : 6790 Psig (477 Kg/Cm <sup>2</sup> )
<b>SIZE RANGE</b>	<b>15 MM TO 50 MM</b>



ITEM NO. 236



## FORGED ALLOY STEEL - ASA 2500 CLASS "Y" TYPE WELDED COVER NON RETURN VALVE

BODY / COVER	ASTM A 182 Gr F 11
TRIMS	13% Cr STEEL + STELLITE-6
MFG STD	API 602
INSP & TEST STD	API 598
ENDS	SOCKETWELD TO ANSI B 16.11 / BUTTWELD END
HYD-TEST PRESSURE	BODY : 9275 Psig (652 Kg/Cm <sup>2</sup> ) SEAT : 6790 Psig (477 Kg/Cm <sup>2</sup> )
<b>SIZE RANGE</b>	<b>15 MM TO 50 MM</b>

ITEM NO. 237



## FORGED ALLOY STEEL - ASA 2500 CLASS "Y" TYPE WELDED COVER NON RETURN VALVE

BODY / COVER	ASTM A 182 Gr F 22
TRIMS	13% Cr STEEL + STELLITE-6
MFG STD	API 602
INSP & TEST STD	API 598
ENDS	SOCKETWELD TO ANSI B 16.11 / BUTTWELD END
HYD-TEST PRESSURE	BODY : 9275 Psig (652 Kg/Cm <sup>2</sup> ) SEAT : 6790 Psig (477 Kg/Cm <sup>2</sup> )
<b>SIZE RANGE</b>	<b>15 MM TO 50 MM</b>

ITEM NO. 238



## FORGED CARBON STEEL - ASA 2500 CLASS "Y" TYPE WELDED COVER STRAINER

BODY / COVER	ASTM A 105
SCREEN	SS 304
MFG STD	MARCK / 014
INSP & TEST STD	MARCK / 014
ENDS	SOCKETWELD TO ANSI B 16.11 / BUTTWELD END
HYD-TEST PRESSURE	BODY : 9275 Psig (652 Kg/Cm <sup>2</sup> ) SEAT : 6790 Psig (477 Kg/Cm <sup>2</sup> )
<b>SIZE RANGE</b>	<b>15 MM TO 50 MM</b>

ITEM NO. 239



## FORGED STAINLESS STEEL - ASA 2500 CLASS "Y" TYPE WELDED COVER STRAINER

BODY / COVER	ASTM A 182 Gr F 304 / F 304L
SCREEN	SS 304
MFG STD	MARCK / 014
INSP & TEST STD	MARCK / 014
ENDS	SOCKETWELD TO ANSI B 16.11 / BUTTWELD END
HYD-TEST PRESSURE	BODY : 9275 Psig (652 Kg/Cm <sup>2</sup> ) SEAT : 6790 Psig (477 Kg/Cm <sup>2</sup> )
<b>SIZE RANGE</b>	<b>15 MM TO 50 MM</b>

# "Y" TYPE STRAINERS



## FORGED STAINLESS STEEL - ASA 2500 CLASS "Y" TYPE WELDED COVER STRAINER

ITEM NO. 240

BODY / COVER	ASTM A 182 Gr F 316 / F 316L
SCREEN	SS 316
MFG STD	MARCK / 014
INSP & TEST STD	MARCK / 014
ENDS	SOCKETWELD TO ANSI B 16.11 / BUTTWELD END
HYD-TEST PRESSURE	BODY : 9275 Psig (652 Kg/Cm <sup>2</sup> ) SEAT : 6790 Psig (477 Kg/Cm <sup>2</sup> )
<b>SIZE RANGE</b>	<b>15 MM TO 50 MM</b>



## FORGED ALLOY STEEL - ASA 2500 CLASS "Y" TYPE WELDED COVER STRAINER

ITEM NO. 241

BODY / COVER	ASTM A 182 Gr F 11
SCREEN	13% Cr
MFG STD	MARCK / 014
INSP & TEST STD	MARCK / 014
ENDS	SOCKETWELD TO ANSI B 16.11 / BUTTWELD END
HYD-TEST PRESSURE	BODY : 9275 Psig (652 Kg/Cm <sup>2</sup> ) SEAT : 6790 Psig (477 Kg/Cm <sup>2</sup> )
<b>SIZE RANGE</b>	<b>15 MM TO 50 MM</b>



## FORGED ALLOY STEEL - ASA 2500 CLASS "Y" TYPE WELDED COVER STRAINER

ITEM NO. 242

BODY / COVER	ASTM A 182 Gr F 22
SCREEN	13% Cr STEEL
MFG STD	MARCK / 014
INSP & TEST STD	MARCK / 014
ENDS	SOCKETWELD TO ANSI B 16.11 / BUTTWELD END
HYD-TEST PRESSURE	BODY : 9275 Psig (652 Kg/Cm <sup>2</sup> ) SEAT : 6790 Psig (477 Kg/Cm <sup>2</sup> )
<b>SIZE RANGE</b>	<b>15 MM TO 50 MM</b>



**ITEM NO. 243**



**M.S. FABRICATED POT TYPE STRAINER**

BODY	IS 2062 / BS 2762 / BS 4360 / ASTM A 106
COVER	CARBON STEEL IS 2062
SCREEN	SS 304 / SS 316
MFG STD	MARCK / 014
TEST STD	BS 6755 PART-I / MARCK / 014
ENDS	FLANGED TO ANSI B16.5 RF (150# / 300# / 600#)
HYD-TEST PRESSURE	BODY : 450 Psig (32 Kg/Cm <sup>2</sup> )
<b>SIZE RANGE</b>	<b>25 MM TO 1200 MM</b>

**ITEM NO. 244**



**M.S. FABRICATED "Y" TYPE STRAINER**

BODY	IS 2062 / BS 2762 / BS 4360 / ASTM A 106
COVER	CARBON STEEL IS 2062
SCREEN	SS 304 / SS 316
MFG STD	MARCK / 014
TEST STD	BS 6755 PART-I / MARCK / 014
ENDS	FLANGED TO ANSI B16.5 RF (150# / 300# / 600#)
HYD-TEST PRESSURE	BODY : 450 Psig (32 Kg/Cm <sup>2</sup> )
<b>SIZE RANGE</b>	<b>25 MM TO 1200 MM</b>

**ITEM NO. 245**



**M.S. FABRICATED "T" TYPE STRAINER**

BODY	IS 2062 / BS 2762 / BS 4360 / ASTM A 106
COVER	CARBON STEEL IS 2062
SCREEN	SS 304 / SS 316
MFG STD	MARCK / 014
TEST STD	BS 6755 PART-I / MARCK / 014
ENDS	FLANGED TO ANSI B 16.5 RF (150# / 300# / 600#)
HYD-TEST PRESSURE	BODY : 450 Psig (32 Kg/Cm <sup>2</sup> )
<b>SIZE RANGE</b>	<b>25 MM TO 1200 MM</b>

**ITEM NO. 246**



**M.S. FABRICATED DUPLEX STRAINER**

BODY	IS 210 Gr FG 200/220
COVER	CARBON STEEL IS 2062
SCREEN	SS 304 / SS 316
MFG STD	MARCK / 014
TEST STD	BS 6755 PART-I / MARCK / 014
ENDS	FLANGED TO ANSI B 16.5 RF (150# / 300# / 600#)
HYD-TEST PRESSURE	BODY : 450 Psig (32 Kg/Cm <sup>2</sup> )
<b>SIZE RANGE</b>	<b>25 MM TO 1200 MM</b>



**CHAIN WHEELS**

**GEAR OPERATORS**

**PNEUMATIC ACTUATORS**

**ELECTRIC ACTUATORS**

**POSITION INDICATORS**

**LOCKING DEVICES**

**LIMIT SWITCH**

# SOME OF OUR PRESTIGIOUS CLIENTS

STEEL INDUSTRIES



POWER GENERATION

REFINERY / PETRO CHEMICALS



WATER TREATMENT

FERTILIZER PLANTS



PULP, PAPER & SUGAR

PHARMA & DRUGS



CEMENT & CHEMICAL INDUSTRIES

OEM & CONTRACTORS





# Hawa Engineers Ltd.

**Corporate Office** :- Narol Road, Ahmedabad-382405. (Gujarat) India.  
**Reg. Office & Works** :- Chandola, Ahmedabad-380028. (Gujarat) India.  
**Visit us** :- [www.hawaengltd.com](http://www.hawaengltd.com)  
:- [YouTube /c/HawaEngineersLtd](https://www.youtube.com/c/HawaEngineersLtd)



design@spectrumadv.in